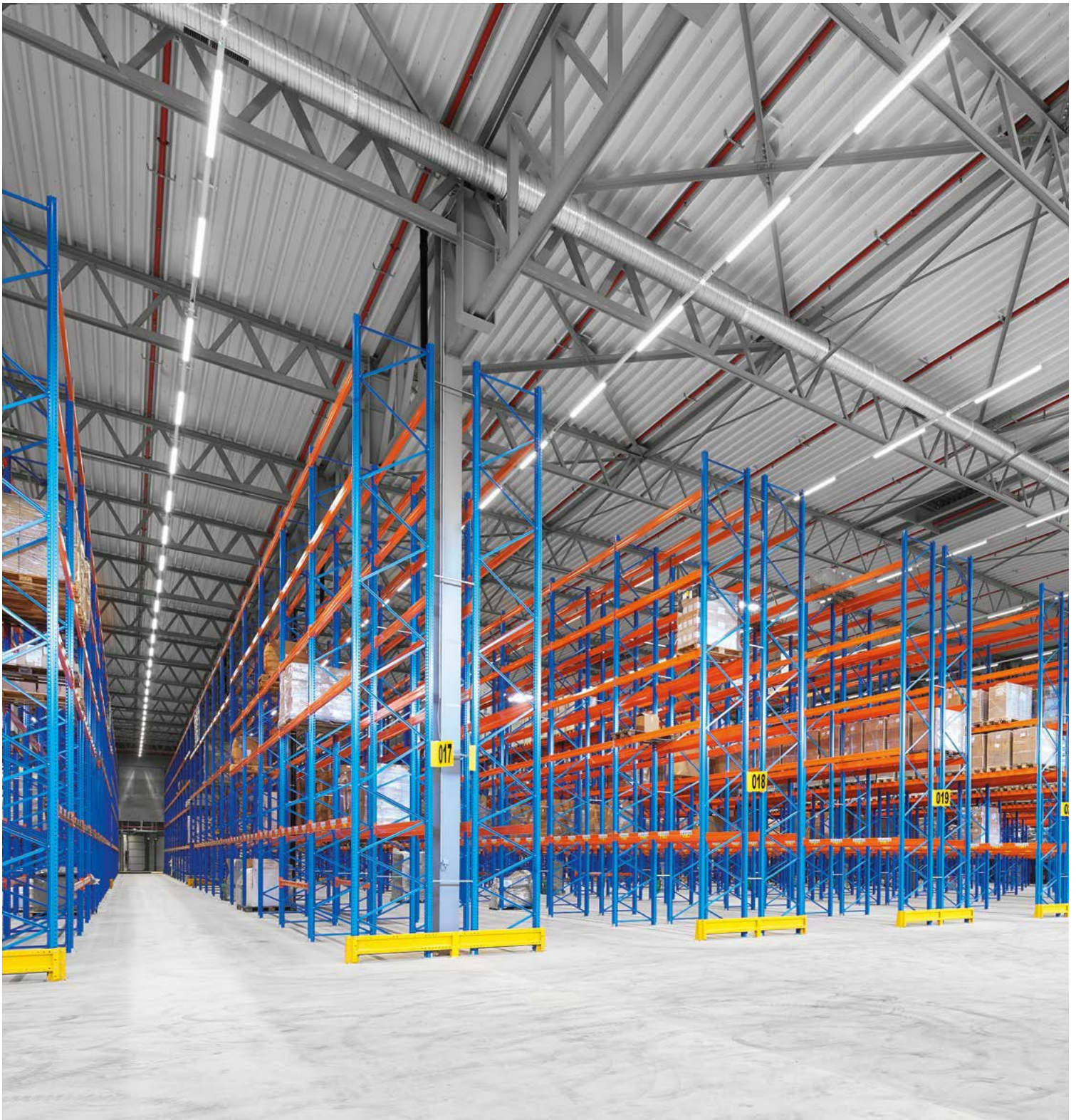


**Aveve  
logistics centre**





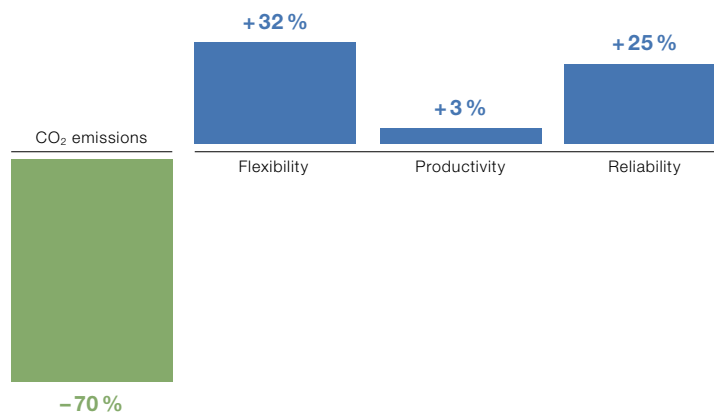
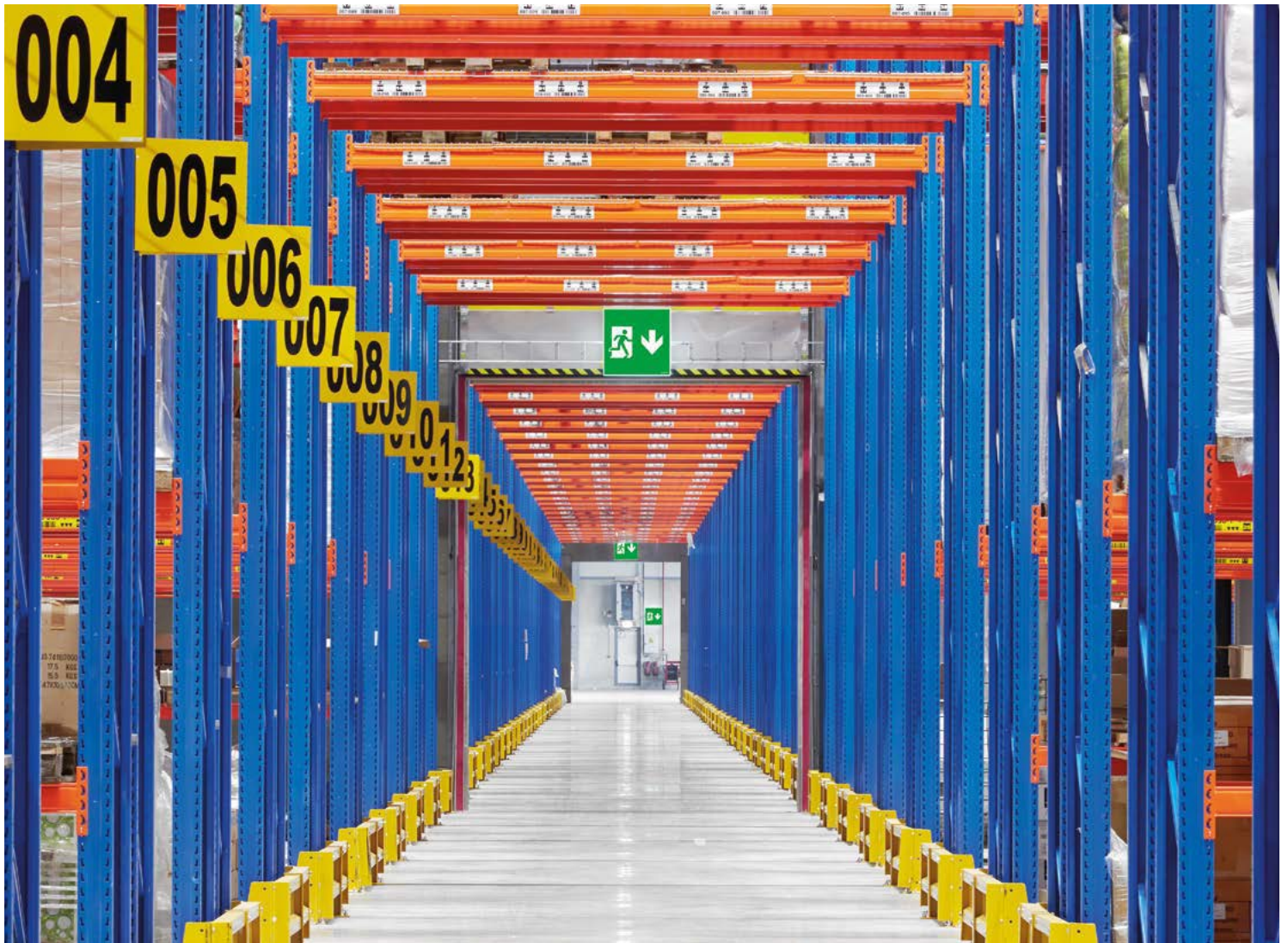


### **Efficiency as far as the eye can reach**

The Aveve Group is the largest supplier of Belgian agriculture and successfully operates a retail chain with 250 garden centres. In line with the desired modernisation of the production and distribution facilities, the idea of sustainable management was also implemented in the newly built logistics centre: the entire building, with a useful area of some 40,000 m<sup>2</sup>, incorporates the latest technologies and is therefore carbon-neutral and energy-neutral at the same time. The state-of-the-art underfloor heating system, geothermal energy and the highly energy-efficient lighting solution all play a major part in this. The best arguments for accepting Zumtobel's quotation were provided by the TECTON continuous-row lighting system. The Aveve company has made use of the system already on several occasions, and optimum solutions were provided every time. By combining the LITENET lighting management system with ONLITE emergency luminaires, maximum energy efficiency, flexibility and reliability could be achieved in the new logistics centre.

[zumtobel.com/Industriebeleuchtung](https://www.zumtobel.com/Industriebeleuchtung)





**Aveve logistics centre, Wilsele | B**

Electrical installations: Belloy Elektrotechniek BVBA, Sint Katelijne Waver | B

Lighting solution: TECTON LED continuous-row system with PST presence detectors, MELLOW LIGHT V and LIGHT FIELDS recessed LED luminaires, PERLUCE luminaires with extra protection, MIRAL/ MIREL surface-mounted luminaires, ONDARIA circular opal luminaires, CREDOS downlights, SCUBA moisture-proof luminaires, ONLITE RESCLITE emergency luminaires, SQUARESIGN escape sign luminaires, LUXMATE LITENET lighting management system



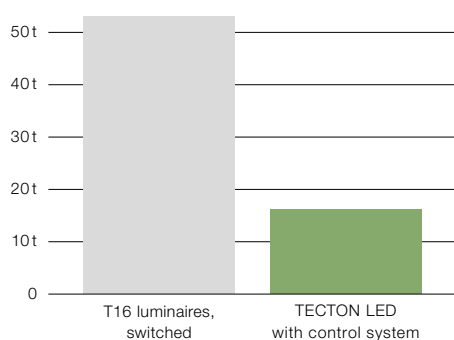
# 1. CO<sub>2</sub> efficiency and cost efficiency

**-70% CO<sub>2</sub>**

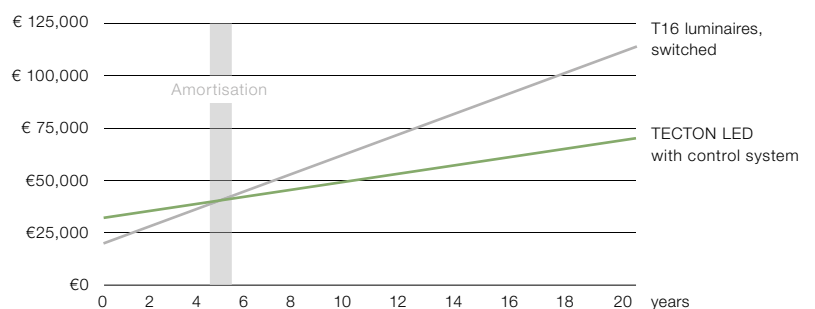
## Maximum efficiency: LED luminaires with intelligent control

The LUXMATE LITENET lighting control system collects all data provided by the TECTON LED continuous-row luminaires and the TECTON PST presence detectors for the high-ceilinged corridors in the warehouse area via 15 DALI lines. If no activities are detected in the circulation areas, the lighting is automatically dimmed down to 10 per cent, and after 10 minutes it is completely cut off with a one-minute fade-out. Wherever employees or vehicles are moving, the lighting is immediately dimmed up to the required level. In order to save even more energy, every luminaire group also features daylight-based control. Initially, slightly higher investment costs are required for implementing this energy-efficient lighting solution involving LED luminaires and intelligent lighting control. However, Zumtobel's ecoCALC calculations show already in advance how quickly these initial costs will pay off: for Aveve, this will be the case already after 4.6 years.

CO<sub>2</sub> emissions over service life (20 years)



Payback period: 4.6 years (total cost)



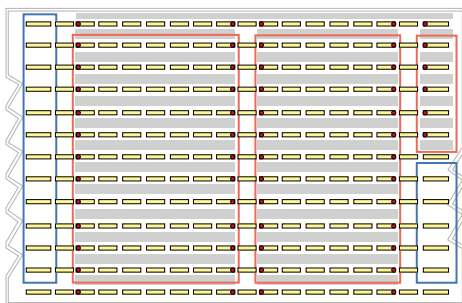
## 2. Flexibility

# +32 %

### Flexibility thanks to TECTON continuous-row lighting system and LITENET control

The entire production hall is illuminated by TECTON LED continuous-row luminaires in compliance with data obtained from the presence detectors. In emergencies, lighting will be provided by small RESCLITE spot LED emergency luminaires. One major benefit of this lighting solution is that all components can easily be clicked into the 11-pole continuous-row lighting system and modifications are possible at any time. More than 2300 TECTON luminaires including daylight sensors and presence detectors are monitored via the central LITENET server. In the event of organisational or technical manufacturing changes, the Aveve logistics centre can thus respond immediately – by making the appropriate settings at the press of a button.

Usable area of warehouse 100 × 16.45 × 12 m (length × width × height)



At the press of a button: using the LITENET INBUILD Pro software, adjustment is really easy

Current zones, may be redefined as required:

Open spaces  High-bay storage facilities  Presence detectors

eco+



Many TECTON LED continuous-row luminaires are labelled as especially resource-friendly products. For more information on eco+, please visit [zumtobel.com/eco](http://zumtobel.com/eco)

### 3. Productivity

# +3%

#### **Pleasant lighting atmosphere thanks to daylight**

Via the skylights, valuable daylight can enter the warehouse facilities. All other application areas such as offices or conference rooms are supplied with natural daylight as well. The natural lighting situation in the halls and rooms resulting from this is perceived as very pleasant and also helps to save energy. The added costs for installing daylight-based control in the Aveve logistics centre were extremely low: the only thing that had to be added to the LITENET system was the external daylight sensor. Superior lighting quality for visual tasks in the high-bay storage facilities is achieved above all by high vertical and horizontal uniformity. In the administrative areas, high-quality lighting solutions were installed as well, ranging from MELLOW LIGHT V for offices, conference rooms and the canteen to ONDARIA circular luminaires for the staircase.

#### **Natural daylight in all rooms**



Daylight entering through the skylights creates a pleasant lighting atmosphere and, thanks to daylight-based control, also helps to save energy.



A pleasant lighting atmosphere ensures a pleasant working environment. MELLOW LIGHT V, which is very similar to daylight, is therefore used in offices and the canteen.

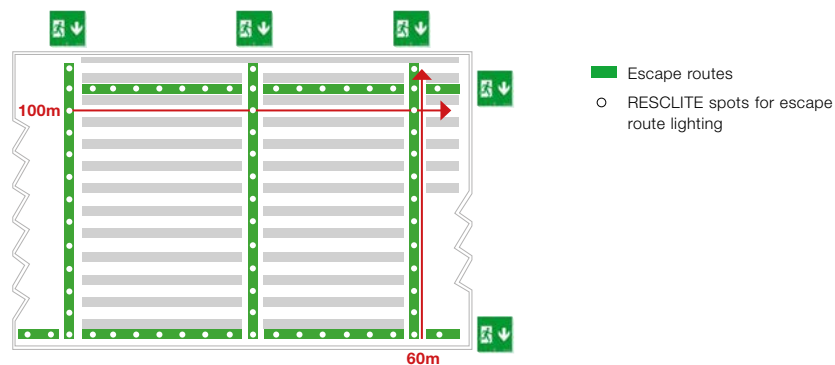
## 4. Reliability

# + 25 %

### High level of safety despite low number of luminaires

Central monitoring of the lighting system by the LITENET lighting control system means that Aveve's facility managers can keep an eye on every luminaire and every sensor. Unambiguous indications provided by the lighting management system via the DALI lines ensure a fast, reliable response to any faults. In case of power failure, the RESCLITE spot LED emergency luminaires also installed on the TECTON trunking at a height of 12 metres will be enabled immediately. Their lighting pattern, which was specifically developed for escape route lighting, allows spacings of up to 8 metres even at this height. With luminance levels of over 500 cd/m<sup>2</sup>, the SQUARESIGN escape sign luminaires are visible from afar.

### RESCLITE emergency luminaires and SQUARESIGN escape-sign luminaires are able to cover long distances





# ZUMTOBEL

## United Kingdom

Zumtobel Lighting Ltd.  
Chiltern Park  
Chiltern Hill, Chalfont St. Peter  
Buckinghamshire SL9 9FG  
T +44/(0)1753 482 650  
F +44/(0)1753 480 350  
uksales@zumtobel.com  
zumtobel.co.uk

## USA and Canada

Zumtobel Lighting Inc.  
3300 Route 9W  
Highland, NY 12528  
T +1/(0)845/691 6262  
F +1/(0)845/691 6289  
zli.us@zumtobel.com  
zumtobel.us

## Australia and New Zealand

Zumtobel Lighting Pty Ltd  
333 Pacific Highway  
North Sydney, NSW 2060  
T +61/(2)8913 5000  
F +61/(2)8913 5001  
info@zumtobel.com.au  
zumtobel.com.au

## China

Zumtobel Lighting China  
Shanghai office  
Room 101,  
No 192 YIHONG Technology Park  
Tianlin Road, Xuhui District  
Shanghai City, 200233, P.R. China  
T +86/(21) 6375 6262  
F +86/(21) 6375 6285  
sales.cn@zumtobel.com  
zumtobel.cn

## Hong Kong

Zumtobel Lighting Hong Kong  
Unit 4319-20, Level 43,  
Tower 1, Metroplaza,  
223 Hing Fong Road,  
Kwai Fong, N.T.  
T +852/(0)2503 0466  
F +852/(0)2503 0177  
info.hk@zumtobel.com

## India

Zumtobel Lighting GmbH  
1522, Devika Tower,  
6, Nehru Place,  
110019 New Delhi  
T +91/11 4601 2782  
info.in@zumtobel.com

## Singapore

Zumtobel Lighting Singapore  
158 Kallang Way # 06-01/02  
Singapore 349245  
T +65 6844 5800  
F +65 6745 7707  
info.sg@zumtobel.com

## United Arab Emirates

Zumtobel Lighting GmbH  
4B Street, Al Quoz Industrial Area  
Dubai, United Arab Emirates  
T +971/4 340 4646  
F +971/4 299 3531  
info@zumtobeluae.ae  
zumtobel.ae

## Romania

Zumtobel Lighting Romania SRL  
Radu Greceanu Street, no. 2,  
Ground Floor, sector 1  
012233 Bucharest  
T +40 731 32 1200  
welcome.ro@zumtobel.com  
zumtobel.com

## Hungary

Zumtobel Lighting Kft  
Váci út 49  
1134 Budapest  
T +36/(1) 35 00 828  
F +36/(1) 35 00 829  
welcome@zumtobel.hu  
zumtobel.hu

## Croatia, Bosnia and Herzegovina

Zumtobel Licht d.o.o.  
Radnička cesta 80 – Zagrebtower  
10000 Zagreb  
T +385/(1) 64 04 080  
F +385/(1) 64 04 090  
welcome@zumtobel.hr  
welcome.ba@zumtobel.com

## Serbia

Zumtobel Licht d.o.o.  
Karadjordjeva 2-4  
Beton Hala  
11000 Belgrade  
T +381/(0)11 65 57 657  
F +381/(0)11 65 57 658  
welcome@zumtobel.rs

## Czech Republic

Zumtobel Lighting s.r.o.  
Jankovcova 2  
Praha 7  
170 00 Praha  
T +420/(2) 66 782 200  
F +420/(2) 66 782 201  
welcome@zumtobel.cz  
zumtobel.cz

## Slovak Republic

Zumtobel Lighting s.r.o  
Vlčie Hrdlo 1,  
824 12 Bratislava  
welcome@zumtobel.sk  
zumtobel.sk

## Poland

Zumtobel Licht GmbH Sp.z.o.o.  
Platinum III  
ul. Woloska 9a  
02-583 Warszawa  
T +48/(22) 856 74 31  
F +48/(22) 856 74 32  
welcome@zumtobel.pl  
zumtobel.pl

## Slovenia

Zumtobel Licht d.o.o.  
Štukljeva cesta 46  
1000 Ljubljana  
T +386/(1) 5609 820  
F +386/(1) 5609 866  
welcome@zumtobel.si  
zumtobel.si

## Russia

Zumtobel Lighting GmbH  
Official Representative Office  
Skakovaya Str. 17  
Bld. No 1, Office 1104  
125040 Moscow  
T +7/(495) 945 36 33  
F +7/(495) 945 16 94  
info-russia@zumtobel.com  
zumtobel.ru

## Norway

Zumtobel Belysning  
Hoffsveien 4  
Postboks 1025 Hoff  
0218 Oslo  
T +47 22 06 50 50  
info.no@zumtobel.com  
zumtobel.no

## Sweden

Zumtobel Belysning  
Birger Jarlsgatan 57  
113 56 Stockholm  
T +46 8 26 26 50  
info.se@zumtobel.com  
zumtobel.se

## Denmark

Zumtobel Belysning  
Store Kongensgade 118  
1264 København  
T +45 35 43 70 00  
info.dk@zumtobel.com  
zumtobel.dk

## Headquarters

Zumtobel Lighting GmbH  
Schweizer Strasse 30  
Postfach 72  
6851 Dornbirn, AUSTRIA  
T +43/(0)5572/390-0  
info@zumtobel.info

Zumtobel Licht GmbH  
Grevenmarschstrasse 74-78  
32657 Lemgo, GERMANY  
T +49/(0)5261 212-0  
F +49/(0)5261 212-7777  
info@zumtobel.de

## zumtobel.com



### Top quality – with a five-year guarantee.

As a globally leading luminaire manufacturer, Zumtobel provides a five year manufacturer's guarantee on all Zumtobel branded products subject to registration within 90 days from the invoice date and in accordance with the terms of guarantee at [zumtobel.com/guarantee](http://zumtobel.com/guarantee).

© Zumtobel Lighting GmbH  
Technical data was correct at time of going to press. We reserve the right to make technical changes without notice. Please contact your local sales office for further information.