



ZUMTOBEL



LUXMATE

Lighting management

In the beginning was dark space. Then light, energy and life. LUXMATE controls the potential of light, creating new worlds of experience. For people, their visions, their well-being. With maximum energy efficiency.

[linked](#)

All order numbers in the PDF are linked to the Zumtobel online catalogue.

Intelligently controlled light

STRONG ON DESIGN

ERGONOMICS

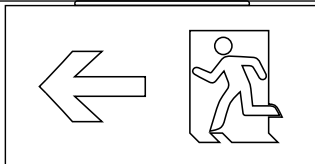


ENERGY-EFFICIENT

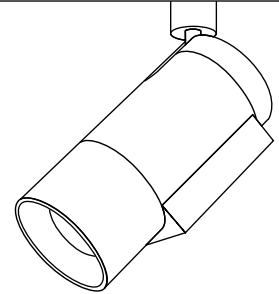
FLEXIBLE

Innovative lighting management

Transforming light into a lighting solution



Emergency lighting

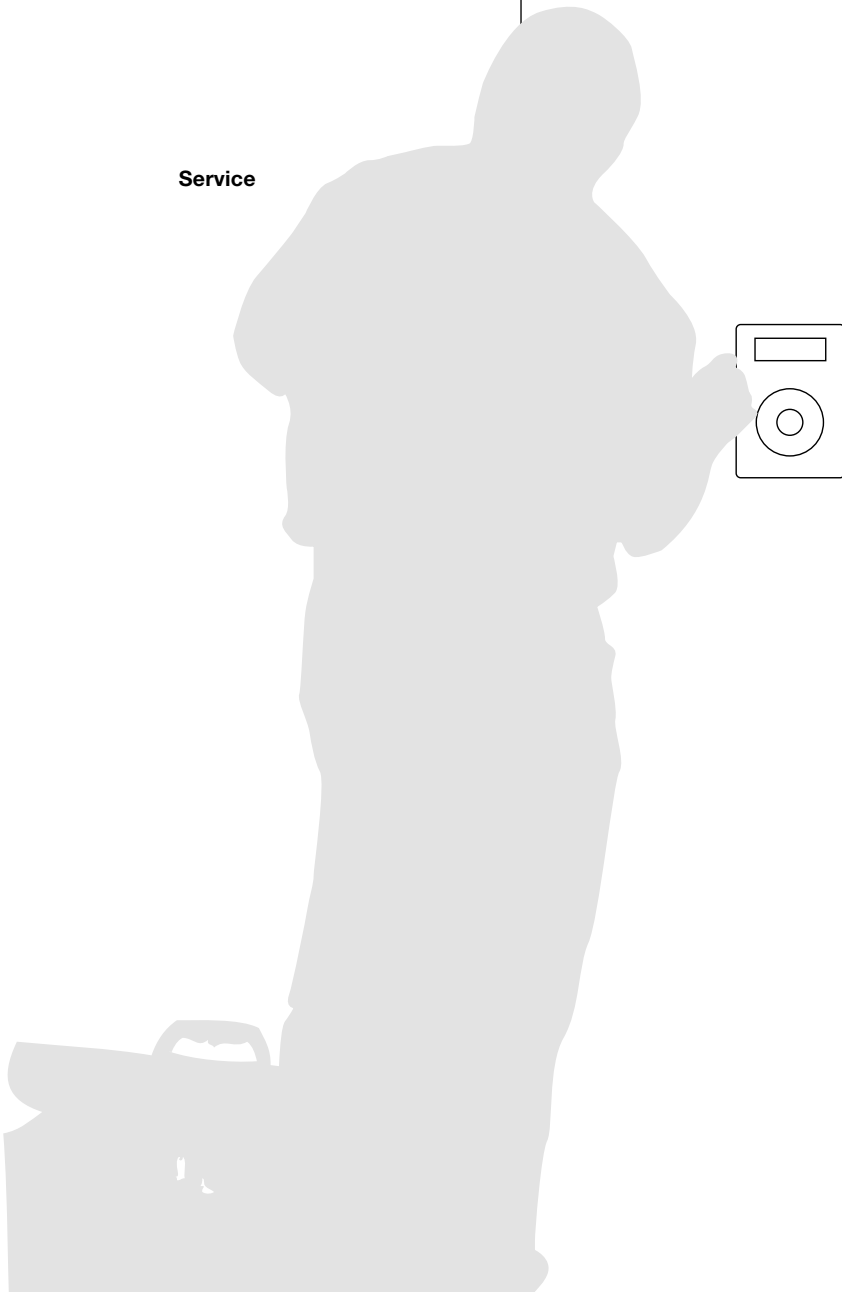


Light

Opening up worlds of experience

LUXMATE lighting management is the bridge between the application concept and the luminaires, making the lighting solution complete. Requirements are met, desired effects are created – at minimum use of resources. In this way, intelligent management strikes a balance between economy and the environment. Convenience and safety are increased to the same extent. Emergency lighting is an integral component of any lighting solution; Zumtobel also provides customised emergency lighting control systems. Numerous automatic functions are included, which make work easier for the building operator. In practical implementation, customers are assisted by experienced Zumtobel experts. Thanks to their extensive solution competence, they ensure sophisticated implementation of the customers' wishes as well as functional reliability.

Service



Lighting management

Natural light

Good for people and good for the energy balance



Human beings and daylight

Daylight is vital for human beings. It influences our performance and our well-being. Modern architecture often relies on large areas of glass frontage with transparent façades, but however pleasing natural light may generally be felt to be, it can also be disturbing under certain conditions. A LUXMATE lighting management system guarantees the correct balance.



11:45 am

At lunchtime the sun is at its zenith, which may lead to undesired glare and warming. Correctly positioned blind slats allow sufficient light to enter the room, and luminaires directly at the window front are heavily dimmed.



current energy consumption 205.5 Watts

86% of a total of 239 watts installed load



7:17 pm

A clear view through the open blinds brings evening atmosphere into the room. Indirect distribution light creates a pleasant ambient brightness. The visual task determines the right quantity of direct light.

Meaningful changes in lighting

Taking nature as a model

Nature has shown us how light influences our mood by colour, intensity and direction. Even subtle changes in white tones are sufficient to provide stimulation or relaxation. As people are highly sensitive; visual enhancements and increases in performance can therefore be easily brought about in museums or offices, for instance. Even where lighting effects are intended to create a high level of attention, Zumtobel has all the right components and formulas at hand. Dynamic changes of high-intensity light colours, for example, make retail areas or façades come alive.



6.500 K



4.000 K



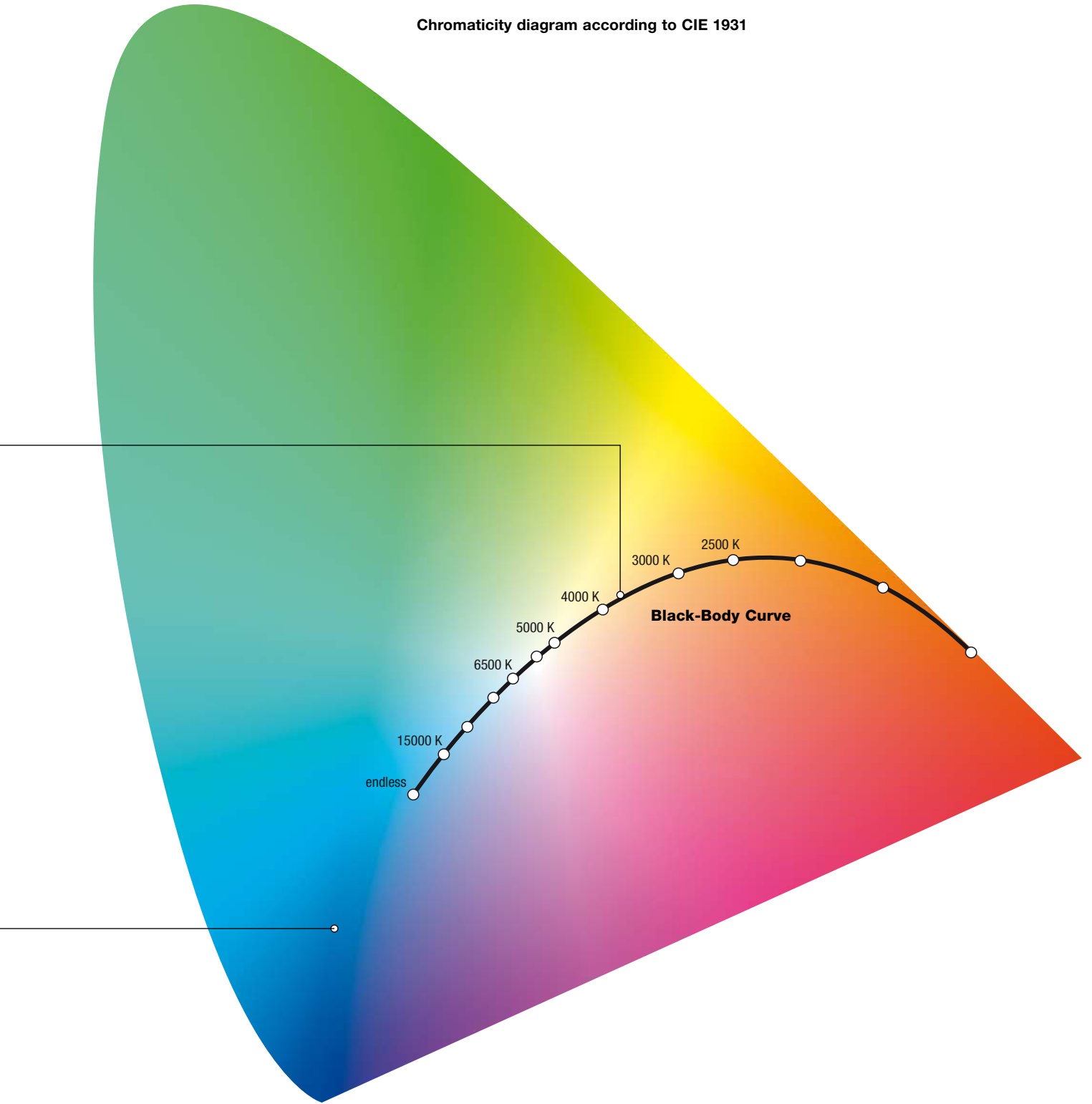
2.500 K

Changing colour temperatures in the white range, for museums or office areas.



Dynamic colour sequences for retail areas or façades.

Chromaticity diagram according to CIE 1931



Attractive interfaces between people and technology

Convenient, intuitive operation

Adjusting lighting scenes at the touch of a button

Every activity is associated with different optimum lighting conditions. LUXMATE users therefore have at their disposal an instrument for composing lighting scenes for specific activities and calling them up on demand – at the touch of a button. All modules use the same symbols, which have been tried and tested in practice: CIRCLE control point, EMOTION touch panel, CIRIA, PC user interface, Web access or telephone. All modules are operated according to the same model. This helps to reinforce familiar and “acquired” processes until operating the system ultimately becomes child’s play.

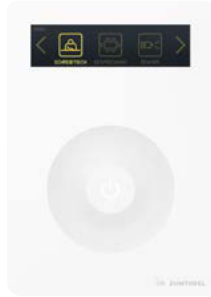


Desk-based work scene

Bright ambient lighting provides for convenient reading at the desktop. The balanced ratio of horizontal and vertical illuminance levels ensures perfect contrast rendition.



CIRCLE



CIRIA



LUXMATE EMOTION



Screen-based work scene

The luminaires in the room provide uniform light distribution as well as minimum glare and reflection; for the user's convenience, the walls are brightened up as well.

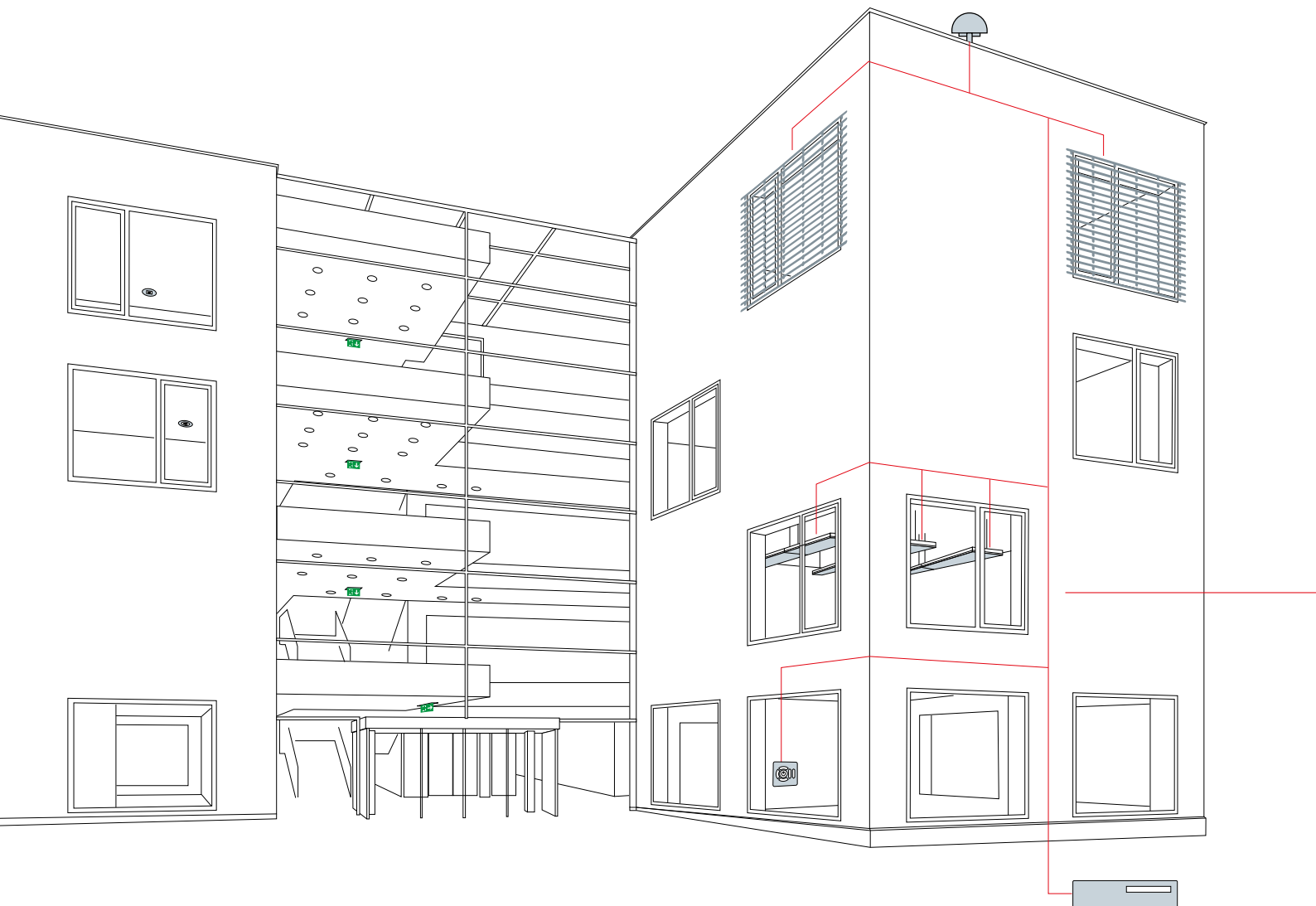


Conference scene

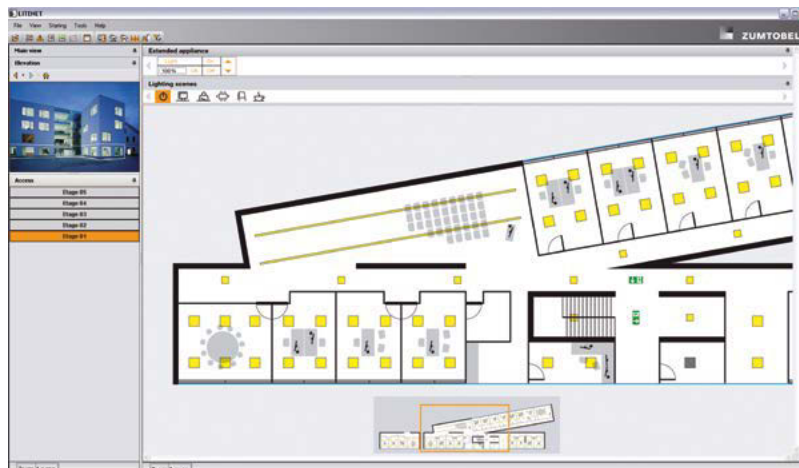
A bright room with a large direct light component is ideal for meetings where people also take notes. Moreover, the cool light colour of the LED luminaires creates a stimulating atmosphere.

Facility Management

Control centre



Via a convenient graphic interface, facility managers, service technicians or porters have the whole building firmly under their control.



Thanks to its comprehensive interfaces with all building services, LUXMATE achieves networked light through a simple control and monitoring centre. Even building-wide or site-wide solutions are possible. The openness of this system can integrate the lighting and shading systems into a centralised building-control system. What really excites facility managers is the speed with which errors can be detected and localised. Information can be collected and the system can be modified at any time by remote maintenance. The user interface is well-structured; the symbols are easily comprehensible.

ONLITE emergency lighting system and escape-sign luminaires

Integrated solutions for increased security



Integrated and safe

In addition to its functions related to design, visual task and emotion, lighting must also fulfil basic safety requirements. A perfectly balanced interplay between the ONLITE safety concept and LUXMATE lighting control modules guarantees that lighting, lighting management and emergency lighting cooperate as a functional whole.

Control with safety

All ONLITE components were designed for integration within the LUXMATE system environment. Emergency lighting and control use the same DALI data line, thereby avoiding the need for additional bus lines. However, general lighting and emergency lighting can be switched and dimmed independently of one another. During normal operation, the emergency lighting component is deliberately suppressed and only shows its true ability in tests or in a real emergency.



Supply and monitor with safety

Routine monitoring and registration of emergency lighting and escape-sign luminaires are a legal requirement. With LUXMATE, these systems can be linked and integrated within a centrally monitored system. This means that savings can be made already at the installation stage; furthermore, monitoring and the writing of test protocols take place automatically, and this reduces the use of personnel.

General lighting and emergency lighting are perfectly matched. General luminaires take over the job of emergency luminaires allowing a continuous luminaire design and an architecturally calm overall image.

Appropriate solutions for every application

LUXMATE lighting management systems at a glance

LUXMATE BASIC

single-room lightingmanagement

ZBOX

plug & play system for hotel rooms

LUXMATE EMOTION

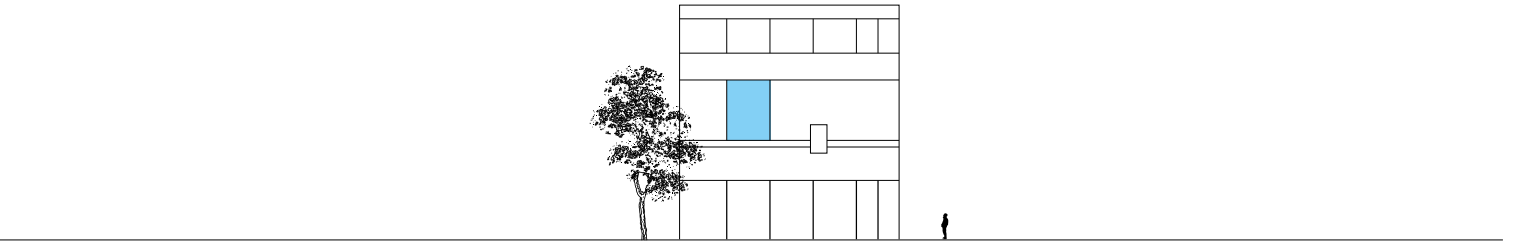
multi-room lightingmanagement

LUXMATE LITENET / PROFESSIONAL

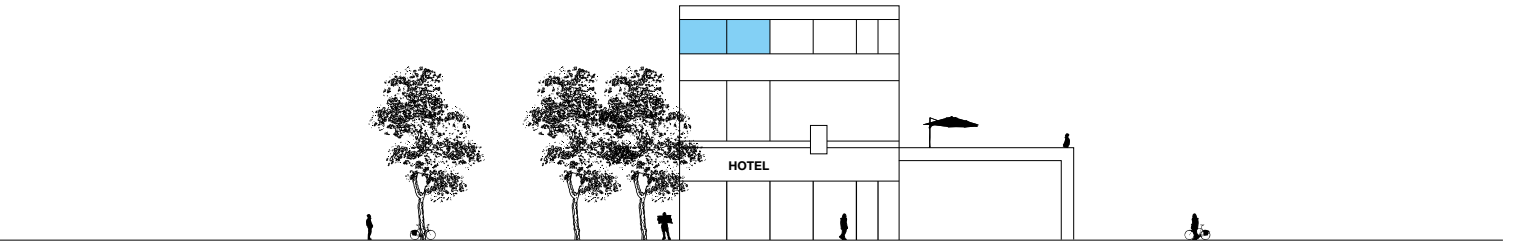
high-end room management system with lighting
and blinds control

DMX lighting management

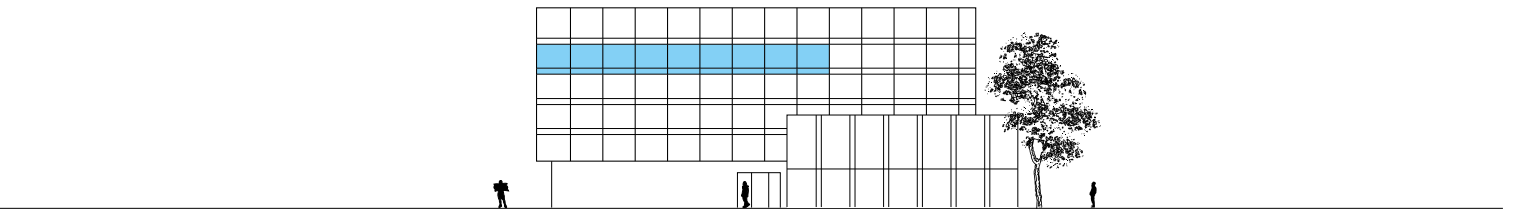
Dynamic lighting scenarios for external façades



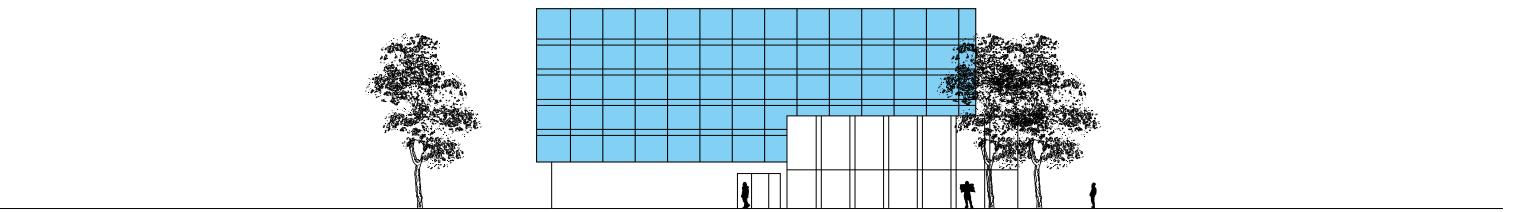
LUXMATE BASIC / DIMLITE



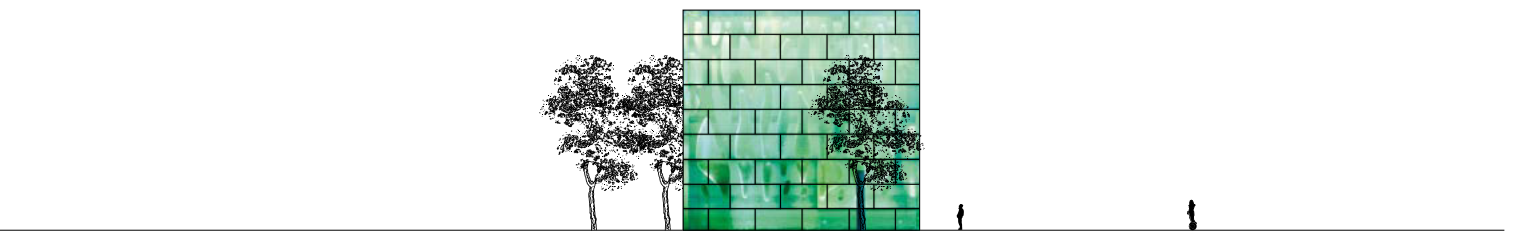
ZBOX



LUXMATE EMOTION



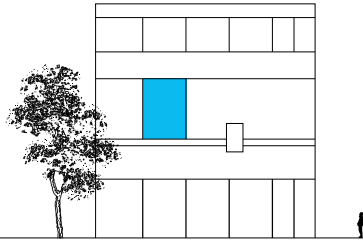
LUXMATE LITENET / PROFESSIONAL



DMX

LUXMATE BASIC/DIMLITE
single-room lightingmanagement

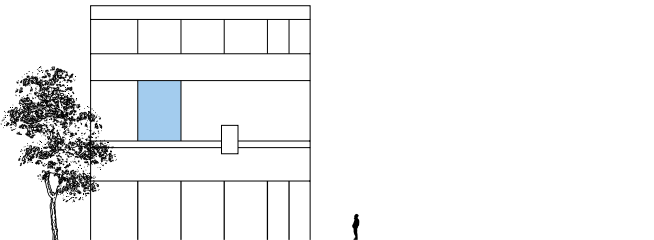




LUXMATE BASIC is the ideal solution for increasing comfort and convenience with the simplest possible resources, while at the same time reducing energy consumption. This entry-level system dims the lighting system either at the touch of a button or automatically depending on the incoming daylight. This solution not only increases the well-being and productivity of employees, it also saves energy and reduces power costs. LUXMATE BASIC is equally suitable for controlling individual luminaires and luminaire groups. Electrical installation and commissioning procedures do not require specially-trained technicians or special equipment.



An intelligent lighting solution at an affordable price: perfect for offices, schools, educational institutions and production facilities.



LUXMATE BASIC / DIMLITE

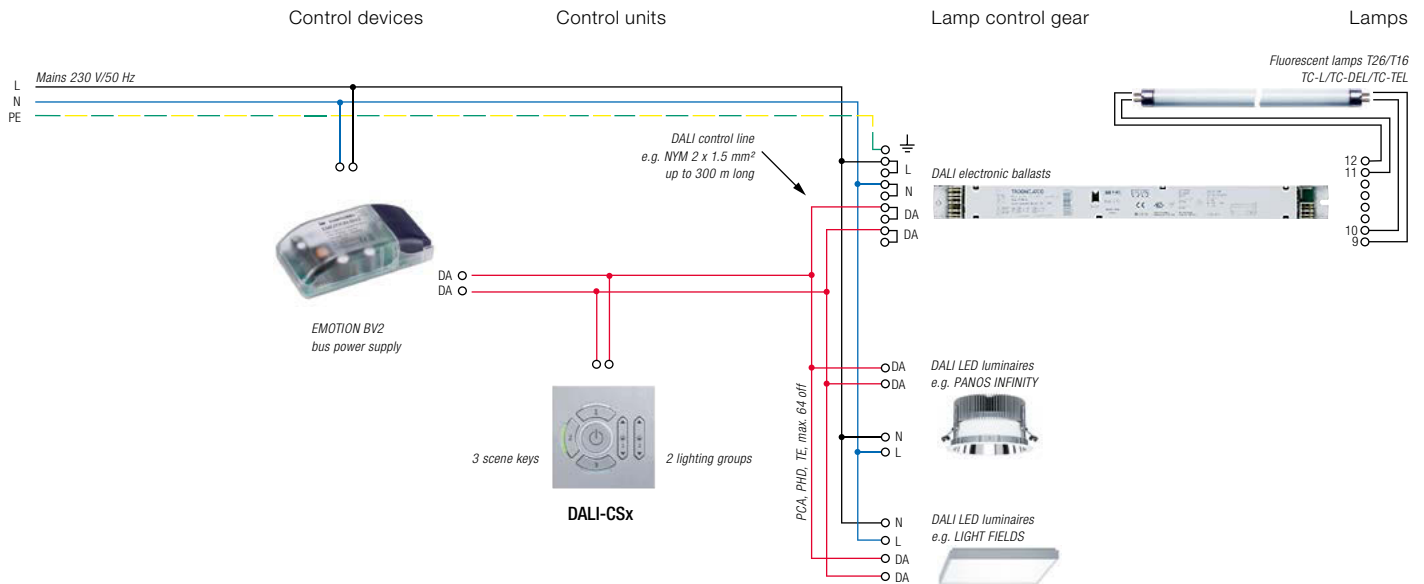
The ideal first step into the world of intelligent lighting control.

Simply connect piece by piece. This lighting control system works like a jigsaw puzzle: various components are added to a basic module, as required. Even the basic unit provides many practical functions such as dimming, a central ON/OFF function and one lighting scene. As requested, a variety of components can be connected to this central module for a functional upgrade.

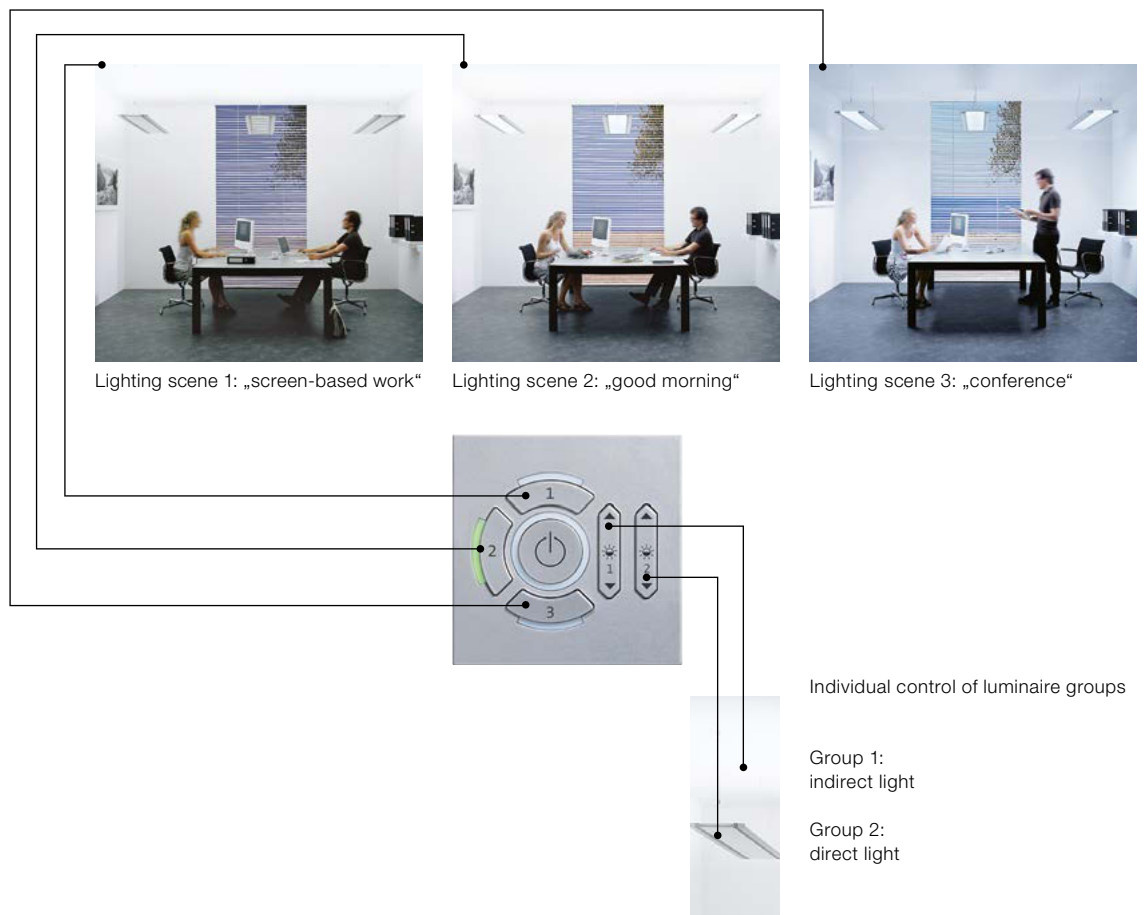
Whether convenient control units like the CIRCLE control point, a presence detector, or a light sensor for daylight-based lighting control – they all have one thing in common: simply connect them and they are ready.

Complete package for 2 lighting groups and 3 lighting scenes

- Control and programming via CIRCLE CSx control point
- Several CIRCLE control points can be connected in parallel
- Control point available in white or silver
- As DALI version
- Up to 64 luminaires can be connected via DALI
- Easy to install and commission
- Bus supply included in package



Scene call-up



BASIC CIRCLE package

[...] Shared properties DALI package with Circle control point

- 3 individually programmable lighting scenes
- Bus power supply for up to 64 DALI dimmable luminaires
- Dimming of 2 luminaire groups
- Easy installation
- One CIRCLE control point equivalent to 3 DALI loads
- DALI CIRCLE control points can be added

CIRCLE kit including control point in rounded-edge design



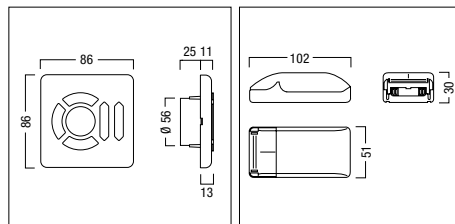
- [...]
- KIT includes: DALI-CSx CIRCLE control point and EMOTION-BV2 power supply

Accessory

	L/W/H	Order no.
DALI package with control unit DALI-CSS KIT silver		22 154 492
DALI package with control unit DALI-CSW KIT white		22 154 493

Converter for DSI operation

DALI-2DSI 2 outputs	160/30/21	22 154 419
---------------------	-----------	------------



CIRCLE kit including control point in square-edge design



- [...]
- KIT includes: DALI-CCx CIRCLE control point and EMOTION-BV2 power supply

DALI package with control unit

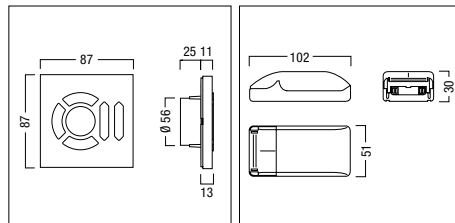
	L/W/H	Order no.
DALI-CCS KIT silver	87/87/13	22 161 689
DALI-CCW KIT white	87/87/13	22 154 625

Converter for DSI operation

DALI-2DSI 2 outputs	160/30/21	22 154 419
---------------------	-----------	------------

Accessory

INTO-1CCX mounting frame for 25mm plasterboard wall		22 161 751
INTO-CCX TOOL Pull-off tool		22 161 893



CIRCLE control point, rounded-edge design, for CIRCLE wall-recessed kit



- Additional control point for a DALI CIRCLE KIT system
- Power supply via DALI control line (equivalent to 3 DALI loads)
- Installed in single Euro socket, dimensions to DIN 0606 (Ø 60 mm, depth 42 mm), or UK metal back-box (not included with product)
- All control points in a CIRCLE KIT installation can be used to run the same scenes and groups in the installation

rounded-edge

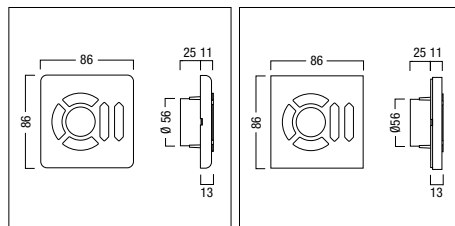
DALI-CSS 1/2/3 silver	86/86/13	22 154 490
DALI-CSW 1/2/3 white	86/86/13	22 154 491

square-edge

DALI-CCS 1/2/3 silver	87/87/13	22 154 626
DALI-CCW 1/2/3 white	87/87/13	22 154 627

Variant

DALI-Cxx (V)		28 000 009
--------------	--	------------



CIRCLE tune kit including control point in square-edge design

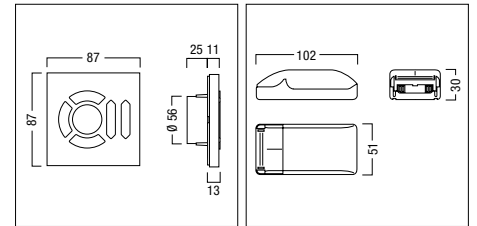
Order no.



- For controlling tunable white luminaires (DALIdt8)
- Can control 1 luminaire group (up to 64 luminaires)
- 3 individually programmable lighting scenes
- Rocker switches for adjusting intensity and colour temperature
- No commissioning (address-setting) necessary (Broadcast mode)
- Up to 11 extra CIRCLE tune control units can be added to package
- One CIRCLE control point equivalent to 3 DALI loads
- Installed in single Euro socket, dimensions to DIN 0606 (Ø 60 mm, depth 42 mm), or UK metal back-box (not included with product)
- KIT includes: CIRCLE tune control unit and EMOTION-BV2 power supply

DALI package with control unit

CIRCLE tune Kit CCS silver	22 185 168
CIRCLE tune Kit CCW white	22 185 167



CIRCLE tune control point, square-edge design, for CIRCLE wall-recessed kit

Order no.



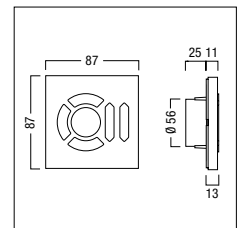
- Provides extra functions for the CIRCLE tune KIT
- For controlling tunable white luminaires (DALIdt8)
- Can control 1 luminaire group (up to 64 luminaires)
- 3 individually programmable lighting scenes
- Rocker switches for adjusting intensity and colour temperature
- No commissioning (address-setting) necessary (Broadcast mode)
- One CIRCLE control point equivalent to 3 DALI loads
- Installed in single Euro socket, dimensions to DIN 0606 (Ø 60 mm, depth 42 mm), or UK metal back-box (not included with product)

square-edge

CIRCLE tune CCS silver	22 185 170
CIRCLE tune CCW white	22 185 169

Variant

TUNE-Cxx (V)	28 000 010
--------------	------------



LUXMATE DIMLITE

DIMLITE: overview of products and applications

Saving energy



Presence detector



Daylight-based control

Convenience features



Conventional switches/momentary action switches



CIRCLE control point



Infrared remote control unit



A direct comparison of ballasts

	Electronic ballast	DALI dimmable
Mode	switch	dim from 1 – 100 %
Input interface	none	switchdim DALI addressable
Lamps	LED, T16, T26, compact fluorescent lamps	LED, T16, T26, compact fluorescent lamps

DIMLITE four versions

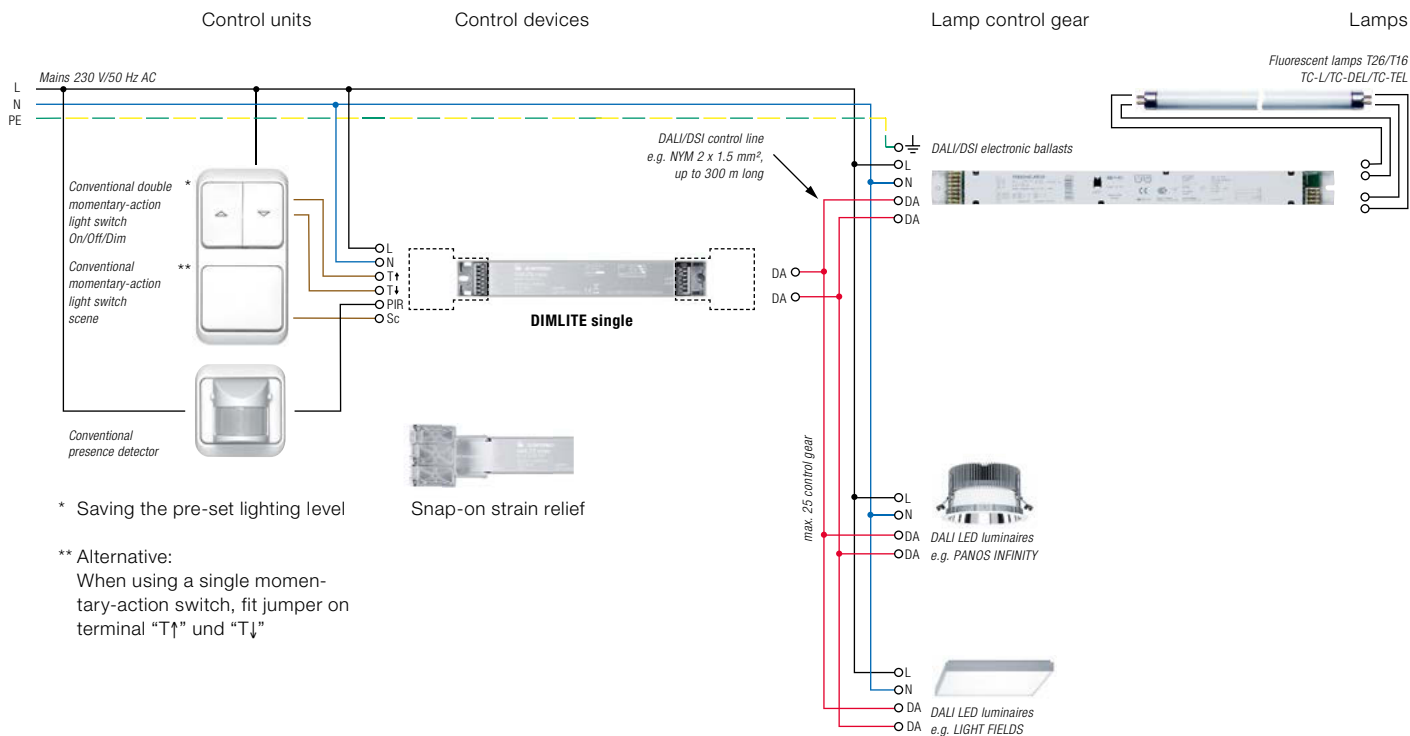
	System size			Functions			Components that can be integrated			
	Number of groups	Number of DSI luminaires	Number of DALI luminaires	Dimming	Lighting scene	Control by momentary-action switch	Presence detector	Daylight-based control	CIRCLE control unit	Remote control unit
DIMLITE basic module										
DIMLITE single*	1	25	25	•	•	•	•			
DIMLITE daylight*	2	50	50	•	•	•	•	•		
DIMLITE multifunction 2ch**	2	100	50	•	•	•	•	•	•	•
DIMLITE multifunction 4ch**	4	200	100	•	•	•	•	•	•	•

* to be installed in luminaire or ceiling void

** for installation in switch cabinet (DIN rail mounted device)

Dimming via control by momentary-action switches

- Absolutely flicker-free, synchronous dimming
- Easy programming and call-up of lighting scenes
- Presence detector can be integrated, 3 functional profiles: ONLY OFF, ON/OFF, CORRIDOR
- Dimming range max. 1–100 %
- Can be operated by any standard momentary-action light switch 230 V
- Several momentary-action switches can be connected in parallel
- DALI/DSI auto identification (no mixed mode)
- Easy installation
- Designs available: installed in luminaire, recessed into ceiling (using strain relief supplied)

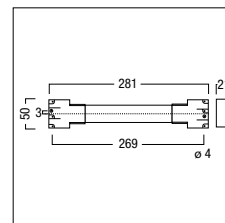


DALI/DSI control unit (PIR, momentary-action switch), 1 channel, installed in luminaire/ceiling



- For single or double momentary-action switch control of up to 25 DSI or DALI compatible control gear units
- DALI/DSI control gear, no mixed operation
- ON / OFF / dimming (1–100 %)
- Either motion detector function (only off, on/off, corridor) or store/run one light scene
- Installation: fitted in luminaire or ceiling void with plug-on strain relief (included)

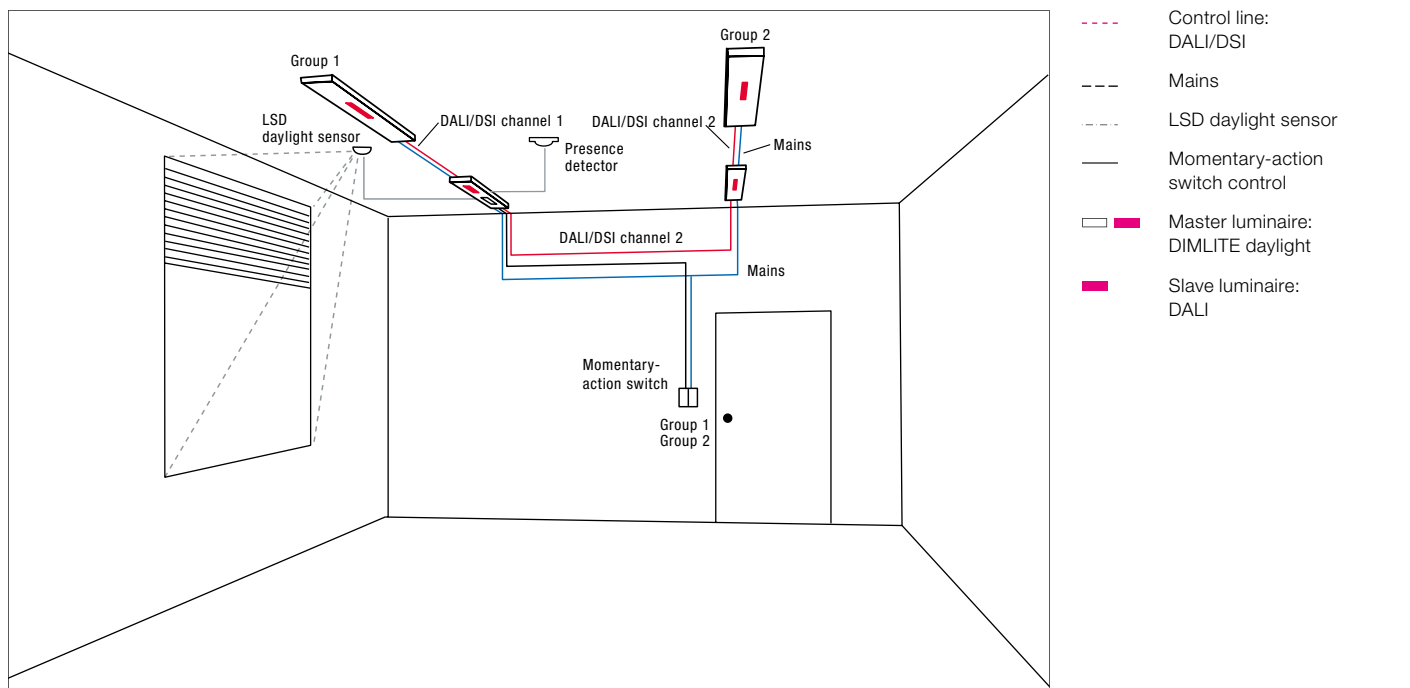
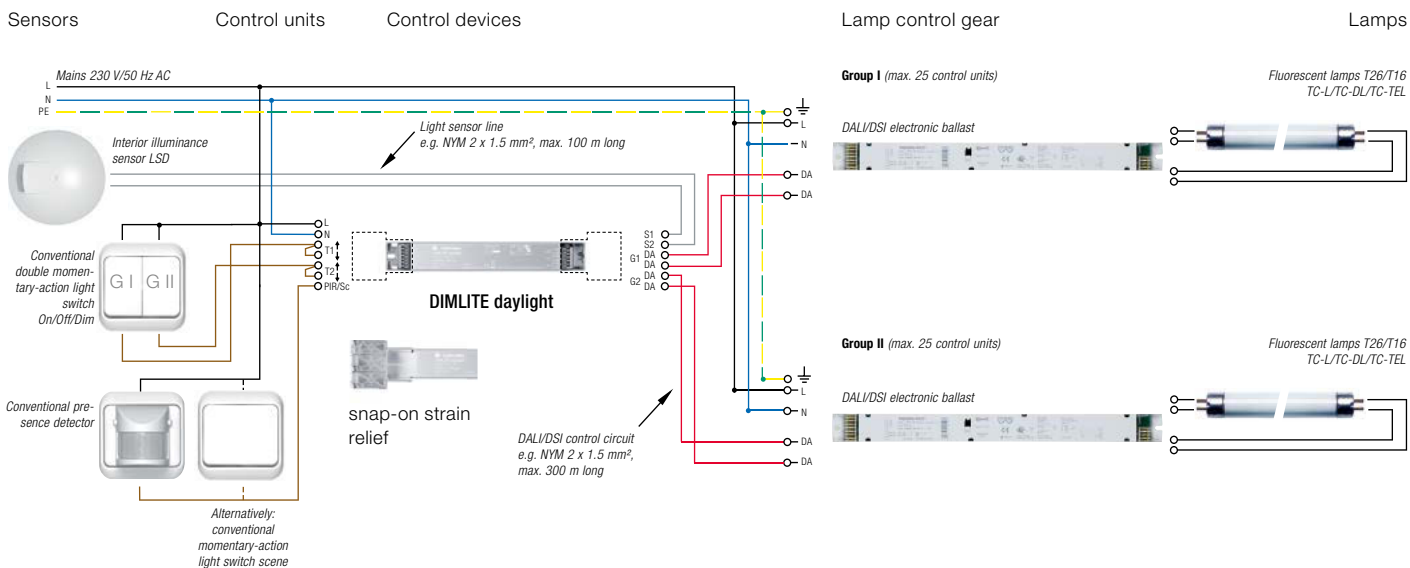
Control device	L/W/H	Order no.
DIMLITE single	281/50/21	22 162 194



DIMLITE Daylight-based dimming

Daylight-based dimming

- Absolutely flicker-free, synchronous dimming
- Automatic daylight-based control
- Alternatively: integration of one lighting scene or a presence detector possible
- Presence detector with 3 functional profiles: ONLY OFF, ON/OFF, CORRIDOR
- Dimming range max. 1–100 %
- Can be operated by any standard momentary-action light switch 230 V
- Several momentary-action switches can be connected in parallel
- DALI/DSI auto identification (no mixed mode)
- Easy installation
- Designs available: installed in luminaire, recessed into ceiling (using strain relief supplied) or already built into luminaire

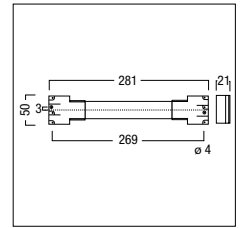


DALI/DSI control unit (sensor, PIR), 2 channels, installed in luminaire/ceiling



- For daylight-based control of 2 luminaire groups, each with up to 25 DSI or DALI compatible control gear units
- DALI/DSI control gear, no mixed operation
- ON / OFF / dimming (1–100 %)
- Either motion detector function (only off, on/off, corridor) or store/run one light scene
- Installation: fitted in luminaire or ceiling void with plug-on strain relief (included)

	L/W/H	Order no.
Control device		
DIMLITE daylight	281/50/21	22 162 195
Accessory		
LSD Light sensor		20 731 906

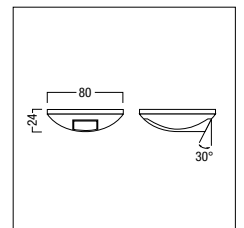


Sensor (light) ceiling mounted



- The light sensor measures the daylight entering the room
- Installation: surface-mounted on ceiling
- For connecting to the local control units.

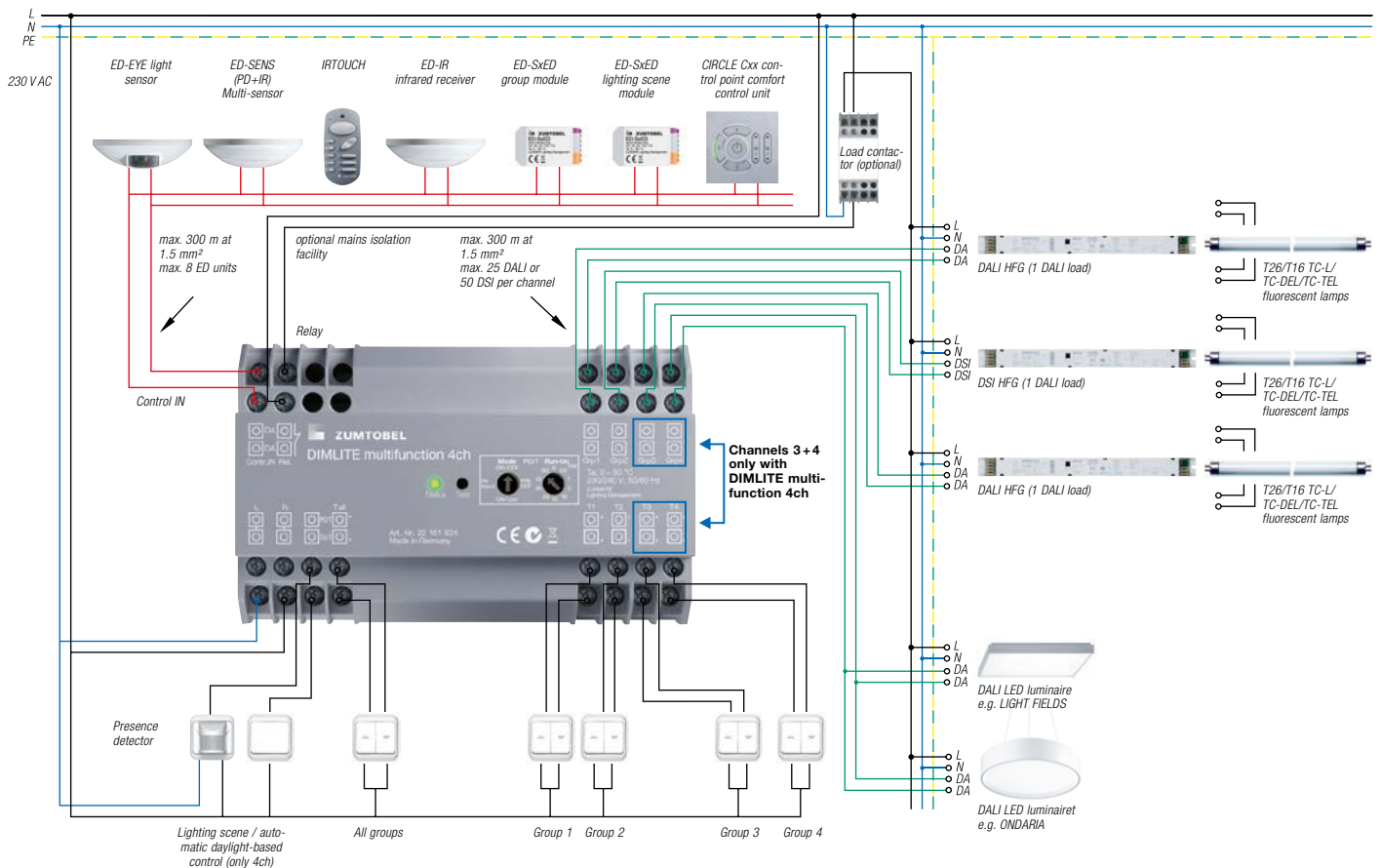
	H/Ø	Order no.
Sensor		
LSD Light sensor	24/80	20 731 906



DIMLITE multifunction

Multifunctional lighting control

- Compact lighting control unit for 2/4 luminaire groups
- DALI and DSI outputs with automatic identification
- Reducing stand-by loss: automatic power disconnection of lighting actuators via integrated relay
- Modular range of functions, to be individually combined:
 - daylight-based control
 - presence detectors / movement sensors ONLY
 - OFF, ON/OFF, CORRIDOR
 - infrared remote control unit
 - CIRCLE comfort control unit
 - lighting scene module
 - group module
- Up to 3 lighting scenes, one of them with daylight-based control (depending on additional devices)
- AUTO setup: automatic initialisation, no addressing required



Design notes

- DIMLITE multifunction 2ch two-channel unit and DIMLITE multifunction 4ch four-channel unit are identical except for the number of output channels and corresponding key inputs
- AUTO setup function: each time the power returns to the unit, the system will be initialised automatically
- Maximum cable length for all control lines (Control-IN, DSI and DALI): max. 300 m each at 1.5 mm²
- The DIMLITE outputs are DSI or DALI broadcast - no addressing is required during commissioning. Groups are assigned by wiring the lighting actuators accordingly
- Maximum of 25 DALI units (25 DALI loads) or 50 DSI units per output channel
- Only Zumtobel ED units may be connected to Control-IN. Maximum of 8 ED units at Control IN (exception on ED-EYE: max. 1 light sensor)
- ED-SENS presence detector can be assigned to individual groups via IR remote control
- Installation of light sensor: surface-mounted on the ceiling, directed towards the window
- Lighting scenes and daylight settings are entered using key combinations
- If a light sensor is installed, Lighting Scene 1 will always call up the daylight programme; all available groups will always be subject to daylight-based control
- Up to 3 lighting scenes, depending on the control unit used; each control unit will always call up the same scene 1, 2, 3 or OFF
- The functions of the "ED-SxED" ED unit may be selected using the integrated rotary switch: either scene module (1, 2, 3, OFF) or group module (dimming of Group 1, 2, 3, 4).
- CIRCLE control unit calls up three lighting scenes and OFF; the two rocker control switches will dim Lighting Groups 1 and 2; Lighting Groups 3 and 4 cannot be individually dimmed
- Conventional 230 V momentary-action switches can be connected to the momentary-action switch inputs
- PIR input to connect a conventional movement sensor
- Relay for mains cut-off: 16 A resistive load; in case of higher loads or capacitive/inductive loads, an external power contactor is recommended

DALI/DSI multifunction control unit, 2 channels, switch cabinet



- Dimming of 2 luminaire groups
- DALI/DSI control gear, no mixed operation, 50 DSI or 25 DALI per channel
- Modular light controller with variable range of functions:
- Daylight-based control using ED-EYE
- Occupancy control using ED-SENS
- Wireless control using IRTOUCH and ED-IR/ED-SENS
- CIRCLE control point (3 scenes, 2 groups) with ED-CSx/ED-CCx
- Four independent momentary-action switches can be integrated via the ED-SDED2 (ED-SxED from Sept 2013) (configured using rotary switch: 4 lighting scenes or 2 groups)
- 1 relay output for disconnecting the control gear from the supply
- No commissioning (address-setting) necessary (Broadcast mode)
- Installed on EN rail 35 mm

Control device

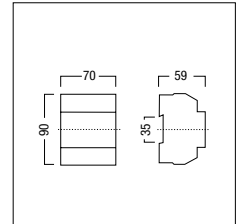
	L/W/H	Order no.
DIMLITE multifunction 2ch	70/90/59	22 161 822

Operation

ED-CCS 1/2/3 Li1/Li2 silver	87/87/13	22 154 657
ED-CCW 1/2/3 Li1/Li2 white	87/87/13	22 154 658
IRTOUCH Infrared remote control for ED-SENS sensor	119/57/28	22 154 450

Sensor

ED-EYE Light sensor	80/80/24	22 154 682
ED-IR Infrared sensor	104/104/42	22 161 823
ED-SENS Präsenz + infrared sensor	104/104/42	22 154 506



DALI/DSI multifunction control unit, 4 channels, switch cabinet



- Dims 4 luminaire groups
- DALI/DSI control gear, no mixed operation, 50 DSI or 25 DALI per channel
- Modular light controller with variable range of functions:
- Daylight-based control using ED-EYE
- Occupancy control using ED-SENS
- Wireless control using IRTOUCH and ED-IR/ED-SENS
- CIRCLE control point (3 scenes, 2 groups) with ED-CSx/ED-CCx
- Four independent momentary-action switches can be integrated via the ED-SDED2 (ED-SxED from Sept 2013) (configured using rotary switch: 4 lighting scenes or 4 groups)
- 1 relay output for disconnecting the control gear from the supply
- No commissioning (address-setting) necessary (Broadcast mode)
- Installed on EN rail 35 mm

Control device

	L/W/H	Order no.
DIMLITE multifunction 4ch	140/90/59	22 161 824

Operation

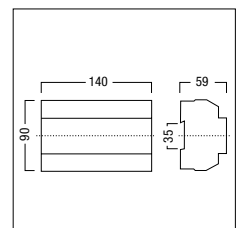
ED-CCS 1/2/3 Li1/Li2 silver	87/87/13	22 154 657
ED-CCW 1/2/3 Li1/Li2 white	87/87/13	22 154 658
IRTOUCH Infrared remote control for ED-SENS sensor	119/57/28	22 154 450

Input device

ED-SxED 4-way	48/28/15	22 176 716
---------------	----------	------------

Sensor

ED-EYE Light sensor	80/80/24	22 154 682
ED-IR Infrared sensor	104/104/42	22 161 823
ED-SENS Präsenz + infrared sensor	104/104/42	22 154 506



DIMLITE multifunction

Complete package for classrooms

Order no.

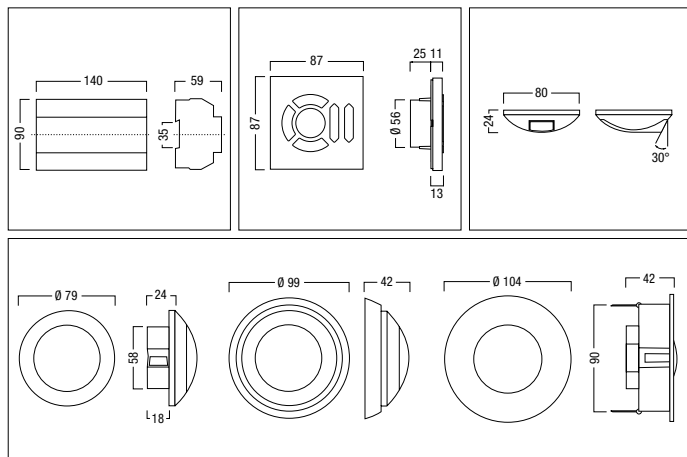


- Dims 4 luminaire groups
- DALI/DSI control gear, no mixed operation, 50 DSI or 25 DALI per channel
- Includes all the components for a classroom
- Daylight-based control using ED-EYE
- Occupancy control using ED-SENS
- CIRCLE control point (3 scenes, 2 groups) with special classroom symbols
- 1 relay output for disconnecting the control gear from the supply
- Units already pre-configured; no commissioning / no addressing required
- Installed on EN rail 35 mm

Pre-assembled package

DIMLITE school KIT

22 162 310



Phase dimmer (DSI/momentary-action switch), installed in luminaire/ceiling

L/W/H

Order no.



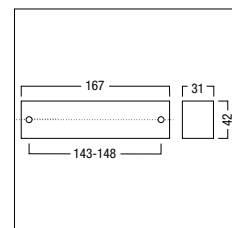
- Phase dimmer up to 500 VA max.
- Automatic load recognition (leading/trailing edge control)
- Control via DSI signal or momentary action switch
- Installation: in luminaire/ in the ceiling void

Phase-control dimmer

PDAX 500VA leading / trailing edge

167/42/31

22 154 307



Phase dimmer (DALI/DSI/momentary-action switch), installed in luminaire/ceiling

L/W/H

Order no.



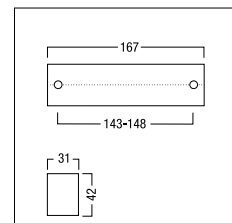
- Phase dimmer up to 500 VA max.
- Automatic load recognition (leading/trailing edge control)
- Control via DALI/DSI signal or momentary action switch
- Installation: in luminaire/ in the ceiling void

Phase-control dimmer

APDX-500 leading / trailing edge

167/42/31

22 154 224



Phase dimmer (DALI/DSI/momentary-action switch), switch cabinet

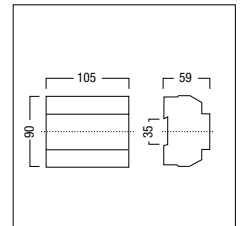
L/W/H Order no.



- Phase dimmer with a max. of 1000 VA
- Automatic load recognition (leading/trailing edge control)
- With Preset function: stores and calls up any light level
- Control via DALI/DSI signal or momentary action switch
- Installed on EN rail 35 mm

Phase-control dimmer
APDS-1000 leading / trailing edge

105/90/59 22 154 223



Phase dimmer (DALI/DSI/momentary-action switch)

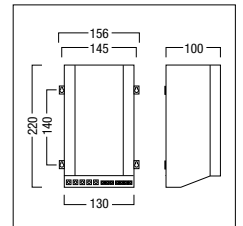
L/W/H Order no.



- Phase dimmer with max. 5000 VA
- With Preset function: stores and calls up any light level
- Control via DALI/DSI signal or momentary action switch
- Installed in switch cabinet, with terminals facing downwards

Phase-control dimmer
APDS-5000 leading edge

156/220/100 22 154 264



Relay output (DSI), installed in luminaire/ceiling

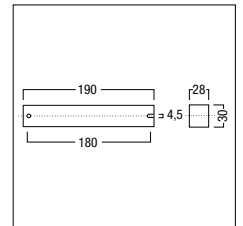
L/W/H Order no.



- One relay contact for switching luminaires and electrical loads based on a programmable DSI control value
- Switching capacity: 500 W / 200 VA
- Installation: in luminaire/ in the ceiling void

Relay output
DSI-RK

190/30/28 86 449 304



DALI amplifier, installed in luminaire

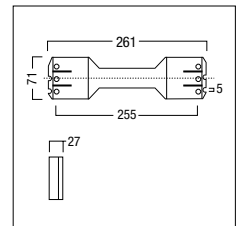
Order no.



- For amplifying the DALI signal and connecting an extra 64 DALI-compatible ballasts
- Installation: in luminaire/ in the ceiling void
- No feedback on lamp faults

Amplifier
DALI-V

22 176 496



DSI amplifier, installed in luminaire

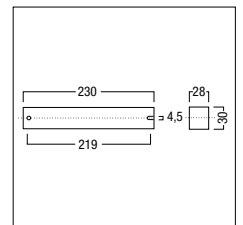
L/W/H Order no.



- For amplification of the DSI signal and connection of additional 50 DSI-controllable control gear
- Installation: in luminaire/ in the ceiling void
- No feedback on lamp faults

Amplifier
DSI-V

230/30/28 20 975 705



DIMLITE operation

[...| Shared properties ED Circle control point, wall-recessed

- 3 lighting scenes
- Dimming of 2 luminaire groups
- Intuitive symbols for convenient operation
- ED-Cxx 1/2/3 printed with "1", "2", "3" and 2 x "Light level"
- Power supply via DALI line (3 DALI loads)
- Installed in single Euro socket, dimensions to DIN 0606 (Ø 60 mm, depth 42 mm), or UK metal back-box (not included with product)
- No DALI addresses occupied
- Variant (V): customised combination of key sets from the intuitive LUXMATE icon collection (see data sheet)

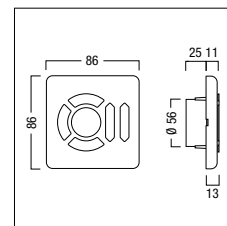
ED Circle control point, rounded-edge design, wall-recessed



- [...|

Light level (2x)	Order no.
ED-CSB 1/2/3 Li1/Li2 anthracite	22 161 827
ED-CSS 1/2/3 Li1/Li2 silver silver	22 154 422
ED-CSW 1/2/3 Li1/Li2 white white (RAL 9003)	22 154 427

Order no.



ED Circle control point, square-edge design, wall-recessed

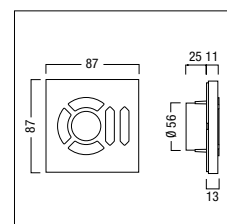


- [...|

Light level (2x)	Order no.
ED-CCB 1/2/3 Li1/Li2 anthracite	22 161 828
ED-CCS 1/2/3 Li1/Li2 silver	22 154 657
ED-CCW 1/2/3 Li1/Li2 white	22 154 658

Order no.

Variant	Order no.
ED-Cxx (V)	28 000 007



Mounting frame for Circle control point



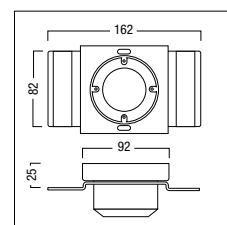
- Installation accessory for flush-fitting one square-edge CIRCLE control point
- Stainless steel recessed frame
- With adjusting screws for precise horizontal alignment after installing in unfinished wall structure
- Standard Ø 68 mm cavity wall socket included
- For 25mm plasterboard wall
- Constant shadow gap between control point and wall cut-out
- Cutout size 92 x 92 mm

Installation box for flush-fitting control point in wall	Order no.
INTO-1CCX mounting frame for 25mm plasterboard wall	22 161 751

Order no.

Extractor tool	Order no.
INTO-CCX TOOL Pull-off tool	22 161 893

Please order extraction tool separately for non-scratch removal of control unit



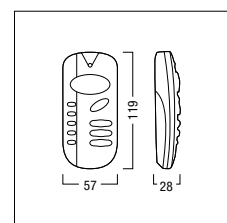
Infrared remote control unit



- For control of up to 5 independent groups (depending on system family used)
- 3 lighting scenes
- ON / OFF / dimming (1–100 %)
- Housing made of grey polycarbonate
- Only in conjunction with ED-SENS part no. 22 154 506 or ED-IR part no. 22 161 823
- When used in EMOTION installation, must be configured using EMOTION-Touch, part no. 22 154 510

Remote control	Order no.
IRTOUCH Infrared remote control for ED-SENS sensor	22 154 450

Order no.



Input (switch/momentary-action switch) 4ch recessed

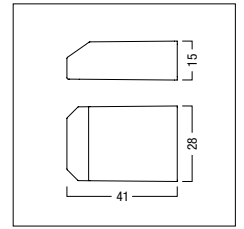
Order no.



- Switch, switch/dim, switch-changeover input with 4 independent inputs for running scenes and dimming using conventional momentary-action switches Momentary-action switch input for opening and closing windows using conventional (dual) mom-action switches
- Function can be configured for each input
- Installed in standard flush socket
- Power cable 30 cm max. (not included)
- Power supply via DALI line (3 DALI loads)

ED-SxED 4-way

22 176 716



ED sensor (light), surface-mount

H/Ø

Order no.

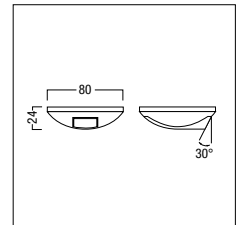


- The light sensor measures the daylight entering the room
- Power supply via DALI line (2 DALI loads)
- Installation: surface-mounted on ceiling
- No DALI addresses occupied
- For use with LM-3DALIS and LITENET netlink

ED-EYE Light sensor

24/80

22 154 682



Sensor (infrared, presence), surface-mount/recessed

Order no.

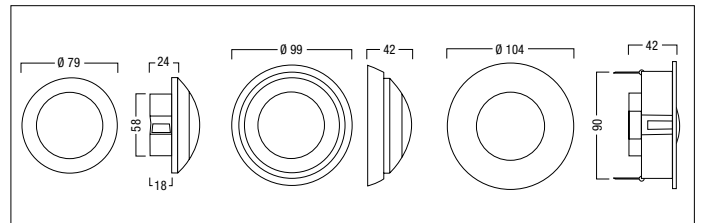


- Presence detector and integrated infrared interface
- Housing: halogen-free white plastic (RAL 9003)
- Detection range at 2.5 m mounting height: 8 m Ø
- Power supply via DALI line (4 DALI loads)
- Ceiling-mounted in Euro/standard single back box; fitting accessories for surface-mounting and recessed-mounting included
- Up to 3 IRTOUCH remote control units with different configuration
- For use with LM-3DALIS and LITENET netlink
- No DALI addresses occupied

Sensor

ED-SENS Präsens + infrared sensor

22 154 506

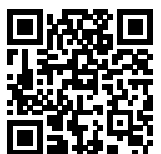


DIMLITE design app for iPad



DIMLITE is the ideal first step into the world of intelligent lighting management. The corresponding Zumtobel DIMLITE app is a free and easy-to-use design tool for electricians and electrical consultants.

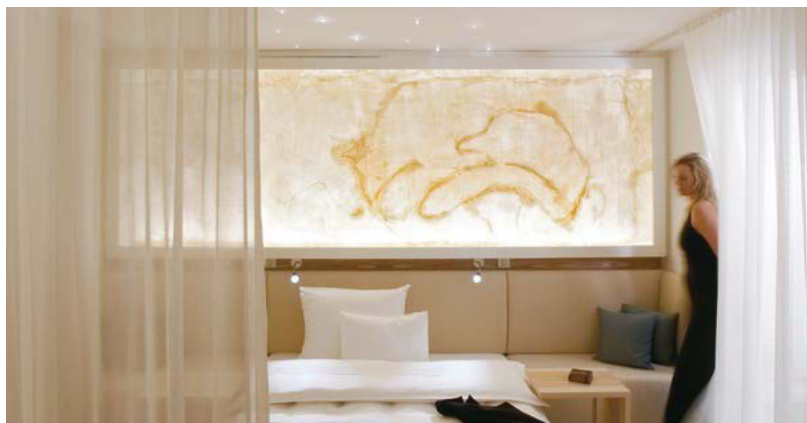
Information and download:
itunes.apple.com/gb/app/dimlite/id594406286

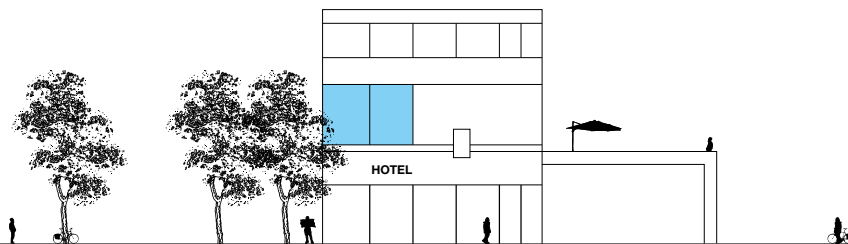


DIMLITE iPad App

ZBOX

Plug & play system for hotel rooms



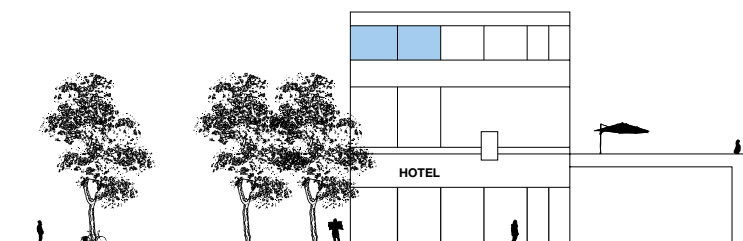


**Plug & play lighting control system for hotel rooms,
private dwellings and shops**

Beneficial lighting scenes at the touch of a button: the all-inclusive package comprising a central control unit and four innovative CIRCLE control points is fully pre-addressed – with optional connectors for dimming, presence detection, door lock systems, blinds control and building management systems.



Light for feeling at ease. Pre-configured lighting scenes can be called up at the touch of a button on the CIRCLE control points supplied with the system.



ZBOX

Light that gets remembered

This plug&play lighting control system is a highlight in many application areas.

Features that ensure differentiation and comfort in hotel rooms also set products perfectly centre stage in shops and assist recovery in patients' rooms thanks to mellow, colour-coordinated light. The overall package including a central control unit and four innovative CIRCLE control points is fully pre-addressed – with optional connections for dimming, presence detectors, door locking systems, blinds control and building management systems. The ZBOX Web tool makes it possible to adapt a configuration using a web browser, without any need for additional software or licences whatsoever.

ZBOX: Plug & Play system for hotel rooms, domestic areas and shops

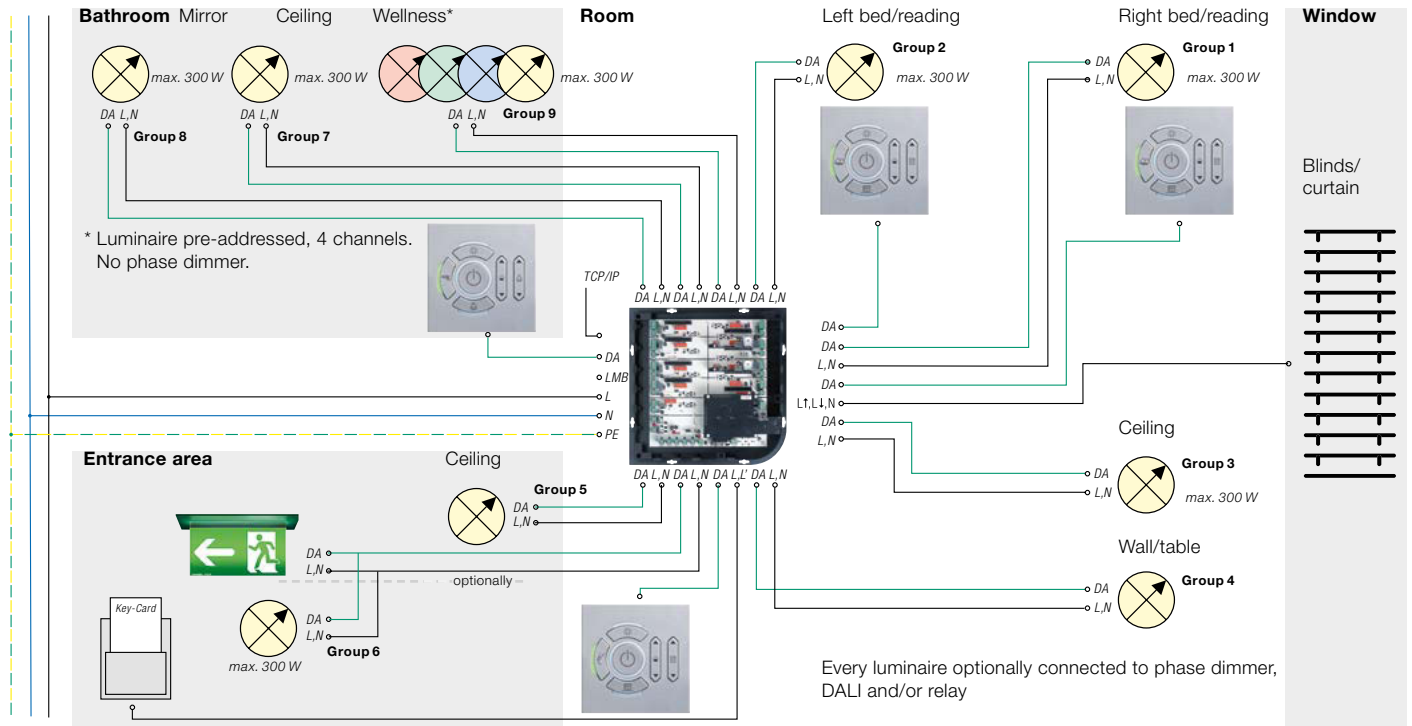
Soothing lighting scenes at the push of a button

- Sleeping – Feeling at ease – Safety – Mirror – Shower – Hygiene.
- Concentration – Working – Internet – Relaxing – Feeling at home – Reading – TV – Packing and unpacking.

Plug & Play

- Pre-addressed and pre-programmed
- Plug-in connectors
- Locally as stand-alone system, or interlinked
- Web tool for fine-adjustment: no licence required, works with standard web browser
- Direct connection via TCP-IP
- Transparency of costs
- can be upgraded
- 4 control points included
- DALI Broadcast (no addressing of loads, except for RGB/W)
- Day and night modes possible

ZBOX wiring diagram



ZBOX package with Circle control point, square-edged design



- Light controller for hotel rooms; includes CIRCLE control point in square-edge design
- 8 lighting groups for switching by means of relay contact and dimming via DALI as well as slot for dimmer module
- ZBOX-Nightlogic for timed scene settings (when networked with Luxmate Professional)
- 1 lighting group with RGB colour sequence via DALI
- 5 inputs for ZBOX CIRCLE control points
- 1 motor channel for blinds
- 2 inputs for key card and access system
- Includes 4 control points with symbol set for 1 x room, 2 x bed, 1 x bathroom
- Plug & Play with preset scenes
- ZBOX Webtool for simple configuration and scene creation via web access
- Stand-alone or linked to network via LUXMATE Bus

Includes 4 dimmer modules and 4 control points

ZBOX 4/300 CCB anthracite	22 161 628
ZBOX 4/300 CCS silver	22 161 627
ZBOX 4/300 CCW white	22 161 626

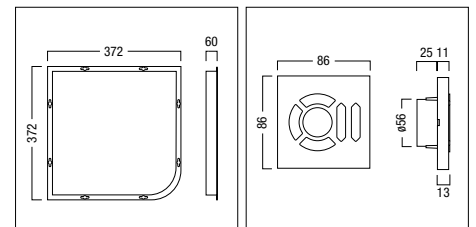
Includes 4 control points

ZBOX CCB anthracite	22 161 620
ZBOX CCS silver	22 161 619
ZBOX CCW white	22 161 618

Accessory

INTO-1CCX mounting frame for 25mm plasterboard wall	22 161 751
INTO-CCX TOOL Pull-off tool	22 161 893
PC-RJ45 CROSS crossed network cable	22 154 194
ZBOX-DIMMER300	22 154 526

Order no.



ZBOX CIRCLE package

ZBOX phase dimmer



- Electrical accessories
- Automatic load recognition (leading/trailing edge control)
- Automatic overload protection in event of lamp fault
- Max. output 300 VA
- Can be plugged into slot 1 to 8 of ZBOX Controller

Phase-control dimmer

ZBOX-DIMMER300

Order no.

22 154 526

ZBOX easy package with Circle control point, square-edge design



- Light controller for hotel rooms; includes CIRCLE control point in square-edge design
- 8 lighting groups for switching by means of relay contact and dimming via DALI as well as slot for dimmer module
- ZBOX-Nightlogic for timed scene settings (when networked with Luxmate Professional)
- 5 inputs for ZBOX CIRCLE control points
- 2 inputs for key card and access system
- Includes 4 control points with symbol set for 1 x room, 2 x bed, 1 x bathroom
- Plug & Play with preset scenes
- ZBOX Webtool for simple configuration and scene creation via web access
- Stand-alone or linked to network via LUXMATE Bus

Includes 2 dimmer modules and 4 control points

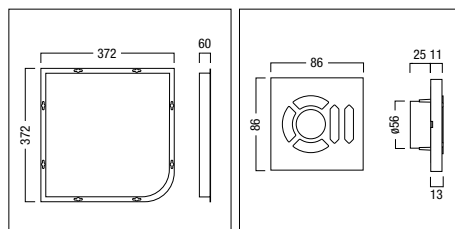
ZBOX easy 2/300 CCB anthracite	22 176 323
ZBOX easy 2/300 CCS silver	22 176 321
ZBOX easy 2/300 CCW white	22 176 322

Includes 4 dimmer modules and 4 control points

ZBOX easy 4/300 CCB anthracite	22 176 326
ZBOX easy 4/300 CCS silver	22 176 324
ZBOX easy 4/300 CCW white	22 176 325

Includes 4 control points

ZBOX easy 0/300 CCB anthracite	22 176 320
ZBOX easy 0/300 CCS silver	22 176 328
ZBOX easy 0/300 CCW white	22 176 319



ZBOX Circle control point, square-edge design, (blinds/light level)



- Control point in square-edge design for connecting to ZBOX controller
- Three scene buttons and presence/absence scene button
- Individual buttons for control of brightness and blinds

Symbol set for room

	L/W/H	Order no.
ZBOX-CCB ROOM anthracite	87/87/13	22 161 643
ZBOX-CCS ROOM silver	87/87/13	22 161 639
ZBOX-CCW ROOM white	87/87/13	22 161 652

Symbol set for bedroom

ZBOX-CCB BED anthracite	87/87/13	22 161 644
ZBOX-CCS BED silver	87/87/13	22 161 640
ZBOX-CCW BED white	87/87/13	22 161 653

Symbol set for bathroom

ZBOX-CCB BATH anthracite	87/87/13	22 161 645
ZBOX-CCS BATH silver	87/87/13	22 161 641
ZBOX-CCW BATH white	87/87/13	22 161 654



ZBOX Circle control point, square-edge design (2x light-level)



- Control point in square-edge design for connecting to ZBOX controller
- Three scene buttons and presence/absence scene button
- Individual buttons for brightness control

Symbol set for room

ZBOX-CCB ROOM Li/Pe anthracite	22 162 182
ZBOX-CCS ROOM Li/Pe silver	22 162 180
ZBOX-CCW ROOM Li/Pe white	22 162 181

Symbol set for bedroom

ZBOX-CCB BED Li/Bo anthracite	22 162 185
ZBOX-CCS BED Li/Bo silver	22 162 183
ZBOX-CCW BED Li/Bo white	22 162 184

Symbol set for bathroom

ZBOX-CCB BATH Li/Co anthracite	22 162 188
ZBOX-CCS BATH Li/Co silver	22 162 186
ZBOX-CCW BATH Li/Co white	22 162 187

Order no.



ZBOX Circle control point, square-edge design, corridor



- Control point in square-edge design for connecting to ZBOX controller
- Button for running scene for person in room/not in room
- Individual button for brightness control

Symbol set for corridor

	L/W/H	Order no.
ZBOX-CCB GO anthracite	87/87/13	22 161 646
ZBOX-CCS GO silver	87/87/13	22 161 642
ZBOX-CCW GO white	87/87/13	22 161 638



Mounting frame for Circle control point



- Installation accessory for flush-fitting one square-edge CIRCLE control point
- Stainless steel recessed frame
- With adjusting screws for precise horizontal alignment after installing in unfinished wall structure
- Standard Ø 68 mm cavity wall socket included
- For 25mm plasterboard wall
- Constant shadow gap between control point and wall cut-out
- Cutout size 92 x 92 mm

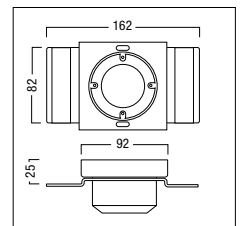
INTO-1CCX mounting frame for 25mm plasterboard wall

22 161 751

INTO-CCX TOOL Pull-off tool

22 161 893

Please order extraction tool separately for non-scratch removal of control unit



Order no.

4-way input (switch/momentary-action switch), recessed

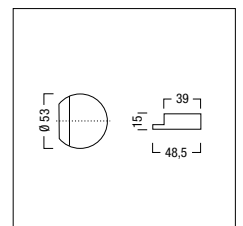


- 4 independent conventional single momentary-action light switches or 2 dual momentary-action switches
- Function can be configured for each input
- 25 cm connecting cable
- Installed in standard flush socket

Input device

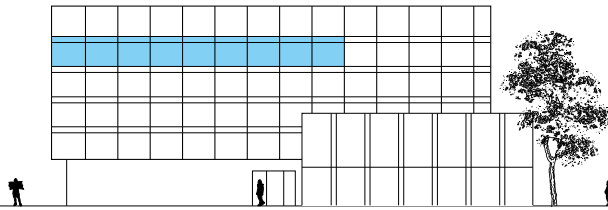
ZBOX-SDED2 (V) 4-way	22 176 497
----------------------	------------

Order no.



LUXMATE EMOTION
multi-room lightingmanagement





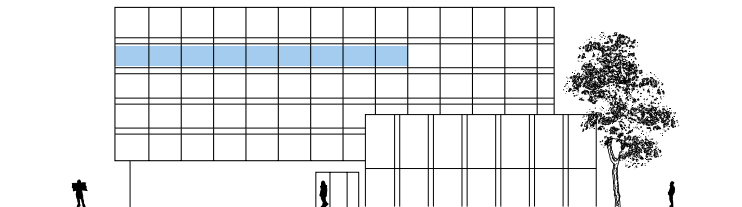
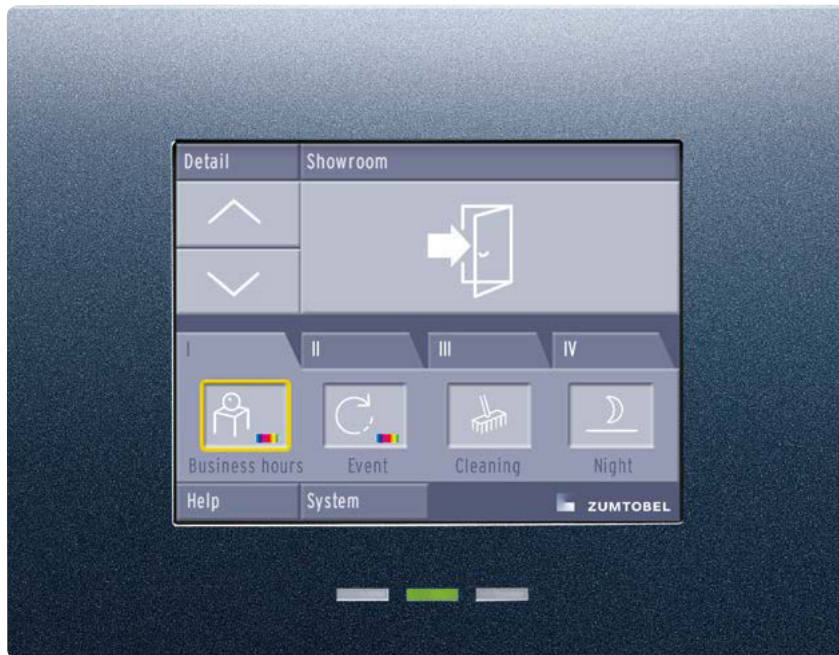
Good lighting is more than just bright

The LUXMATE EMOTION touch panel opens up additional opportunities for creativity in design: mobile and coloured light, compositions using several light sources, mixtures of direct and indirect light.

Especially in applications, in which the emotional qualities of light are important, the control and operating panel always ensures the appropriate lighting scenery. In shops and stores, colour and dynamics increase customer frequency. With EMOTION, the wellness sector is transformed into a sensuous and relaxing experience. In the office, pleasant and productive lighting solutions can be created throughout the room. Every lighting scene, every combination of different luminaires and light sources can be focused rapidly and accurately as required to support actual visual tasks. The system is operated either via the CIRCLE touch panel marked with easily comprehensible symbols specially designed by Matteo Thun, or using conventional momentary-action switches.



The local DALI-based lighting management system boosts the value of boutiques, offices, medical practices, wellness areas, restaurants and bars.



LUXMATE EMOTION

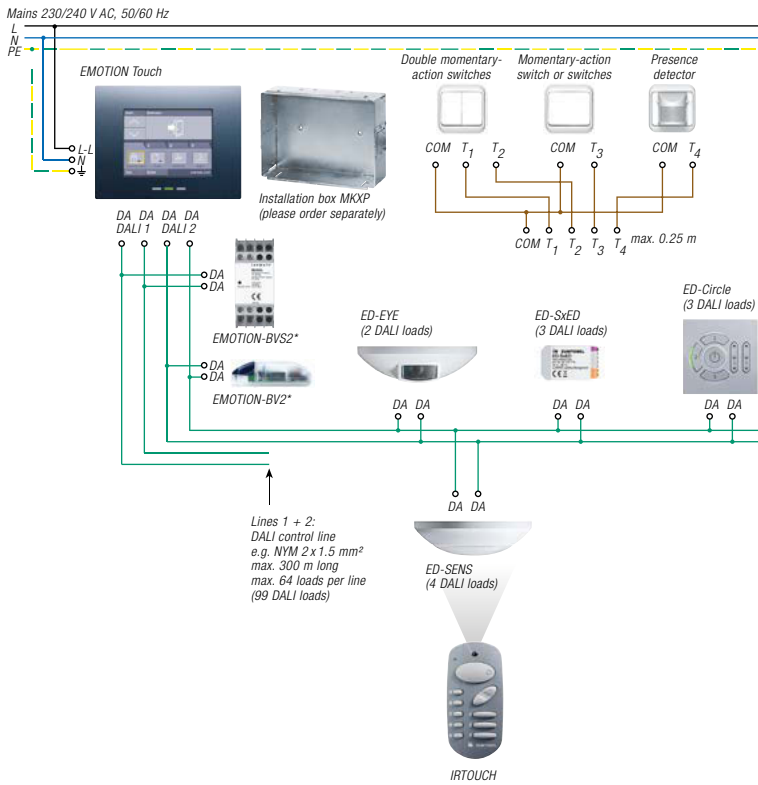
Unique in terms of function and design

EMOTION touch panels take lighting control to a higher level – by providing additional functions, greater convenience and an easily understandable method of interaction which is as intuitive as ever.

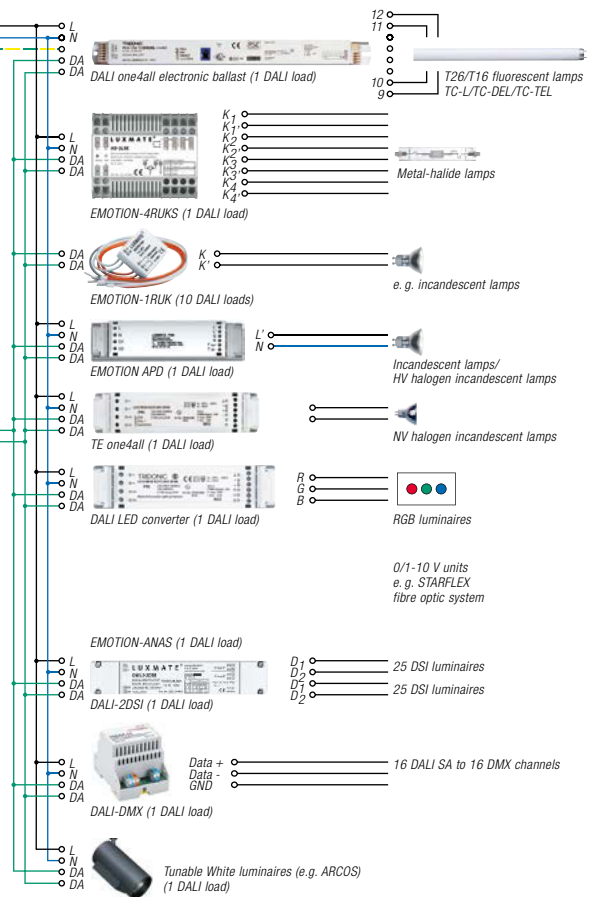
The EMOTION touch panel is a control and operating unit in one and provides an ideal way of easily coordinating several lighting components to produce dynamic lighting scenes.

This versatile lighting management system is really easy for users to operate. Comprehensive function packages are pre-installed so that precisely defined lighting scenes and sequences can be easily applied or used as inspiring templates for personalised lighting ideas.

Operation/Power Supply



Lighting



DALI touch panel (standard), wall-recessed



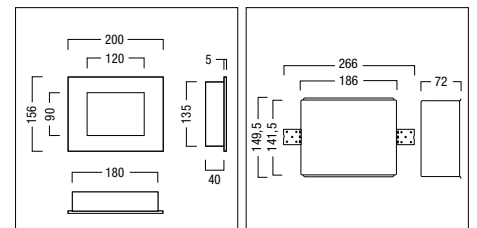
- Standard full version including all functions
- DALI control and addressing unit for up to 128 (2 x 64) DALI actuators
- Definition of complex light shows and sequences
- For controlling special luminaires: colour and colour-temperature luminaires
- Can be used with motion sensors and infrared remote control units
- Daylight-based control of luminaires
- Advanced time-based control
- Daytime natural-light simulation (Motivation cycle, Pureline)
- Data backup by SD (64 MB card included)
- Special image-guided setup manual included on CD
- Up to 32 groups and 16 scenes
- Multi-room capability: up to 16 rooms can be controlled
- An additional 128 areas max. (multiple-room control)

Control and commissioning panel

	L/W/H	Order no.
EMOTION-Touch Standard full version	200/156/40	22 154 510

Accessory

EMOTION-BV2 Power supply		22 154 729
EMOTION-BVS2 Power supply		22 154 276
MKXP Touchpanel installation box		22 154 482



EMOTION operation

[...] Shared properties ED Circle control point, wall-recessed

- 3 lighting scenes
- Dimming of 2 luminaire groups
- Intuitive symbols for convenient operation
- ED-Cxx 1/2/3 printed with "1", "2", "3" and 2 x "Light level"
- Power supply via DALI line (3 DALI loads)
- Installed in single Euro socket, dimensions to DIN 0606 (Ø 60 mm, depth 42 mm), or UK metal back-box (not included with product)
- No DALI addresses occupied
- Variant (V): customised combination of key sets from the intuitive LUXMATE icon collection (see data sheet)

ED Circle control point, rounded-edge design, wall-recessed

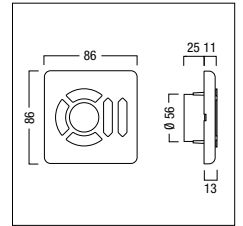
Order no.



- [...]

Light level (2x)

ED-CSB 1/2/3 Li1/Li2 anthracite	22 161 827
ED-CSS 1/2/3 Li1/Li2 silver silver	22 154 422
ED-CSW 1/2/3 Li1/Li2 white white (RAL 9003)	22 154 427



ED Circle control point, square-edge design, wall-recessed

Order no.



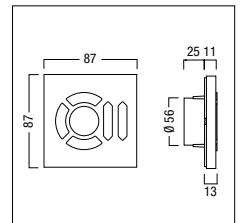
- [...]

Light level (2x)

ED-CCB 1/2/3 Li1/Li2 anthracite	22 161 828
ED-CCS 1/2/3 Li1/Li2 silver	22 154 657
ED-CCW 1/2/3 Li1/Li2 white	22 154 658

Variant

ED-Cxx (V)	28 000 007
------------	------------



Mounting frame for Circle control point

Order no.



- Installation accessory for flush-fitting one square-edge CIRCLE control point
- Stainless steel recessed frame
- With adjusting screws for precise horizontal alignment after installing in unfinished wall structure
- Standard Ø 68 mm cavity wall socket included
- For 25mm plasterboard wall
- Constant shadow gap between control point and wall cut-out
- Cutout size 92 x 92 mm

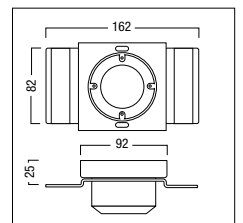
Installation box for flush-fitting control point in wall

INTO-1CCX mounting frame for 25mm plasterboard wall	22 161 751
---	------------

Extractor tool

INTO-CCX TOOL Pull-off tool	22 161 893
-----------------------------	------------

Please order extraction tool separately for non-scratch removal of control unit



Infrared remote control unit

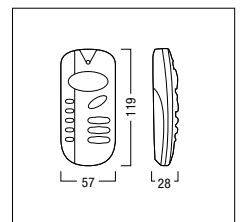
Order no.



- For control of up to 5 independent groups (depending on system family used)
- 3 lighting scenes
- ON / OFF / dimming (1–100 %)
- Housing made of grey PC
- Only in conjunction with ED-SENS part no. 22 154 506 or ED-IR part no. 22 161 823
- When used in EMOTION installation, must be configured using EMOTION-Touch, part no. 22 154 510

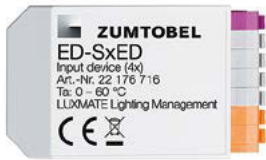
Remote control

IRTOUCH Infrared remote control for ED-SENS sensor	22 154 450
--	------------



Input (switch/momentary-action switch) 4ch recessed

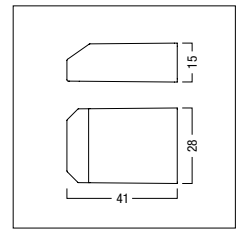
Order no.



- Switch, switch/dim, switch-change-over input with 4 independent inputs for running scenes and dimming using conventional momentary-action switches Momentary-action switch input for opening and closing windows using conventional (dual) mom-action switches
- Function can be configured for each input
- Installed in standard flush socket
- Power cable 30 cm max. (not included)
- Power supply via DALI line (3 DALI loads)

ED-SxED 4-way

22 176 716



Analogue converter (DALI), switch cabinet

L/W/H

Order no.



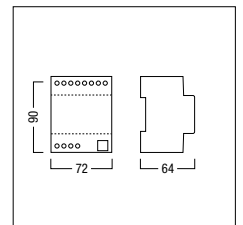
- Units controlled using 0/1–10 V system
- Positioning of colour/dimming wheel module for fibreoptic systems (BCD switch addressed on projector: 650–653)
- Outputs: 0/1–10 V control voltage, load contact (max. 5 A~, internally linked with "L")
- Installed on EN rail 35 mm
- Linear adjustment of dimming type
- 1 analog converter occupies 1 DALI load

Converters

EMOTION-ANAS

72/90/64

22 154 234



DSI converter (DALI), installed in luminaire/ceiling

L/W/H

Order no.



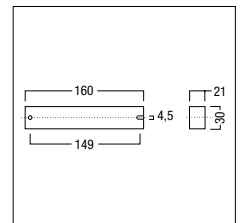
- For controlling 2 luminaire groups, each with a max. of 25 DSI-compatible control gear
- 1 DALI-2DSI occupies 1 DALI load
- Installation: in luminaire/ in the ceiling void

Converters

DALI-2DSI 2 outputs

160/30/21

22 154 419



Phase dimmer (DALI), installed in luminaire/ceiling

L/W/H

Order no.



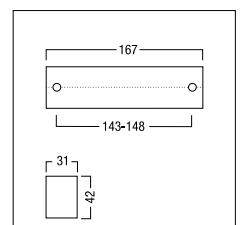
- Phase dimmer up to 500 VA max.
- Phase dimmer with DALI control
- Automatic load recognition (leading/trailing edge control)
- Installation: in luminaire/ in the ceiling void
- 1 dimmer occupies 1 DALI load

Phase-control dimmer

EMOTION-APDX 500VA

167/42/31

22 154 290



EMOTION light actuators

Phase dimmer (DALI) , switch cabinet

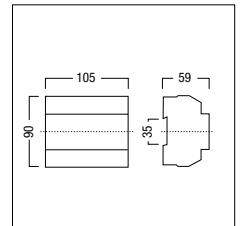


- Phase dimmer with a max. of 1000 VA
- Phase dimmer with DALI control
- Automatic load recognition (leading/trailing edge control)
- 1 dimmer occupies 1 DALI load
- Installed on EN rail 35 mm

Phase-control dimmer
EMOTION-APDS 1000VA

L/W/H Order no.

105/90/59 22 154 291



Phase dimmer (DALI/DSI/momentary-action switch)

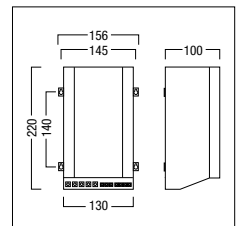


- Phase dimmer with max. 5000 VA
- Phase dimmer with DALI control
- Installed in switch cabinet, with terminals facing downwards
- 1 dimmer occupies 1 DALI load

Phase-control dimmer
APDS-5000 leading edge

L/W/H Order no.

156/220/100 22 154 264



Relay output (EMOTION), installed in luminaire/ceiling



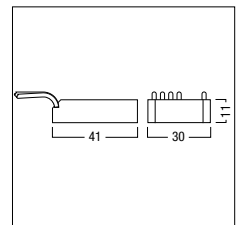
- Relay contact for connecting luminaires and electrical consumers
- 25 cm connecting cable
- Current load 1 x 4 A (cosPHI = 1)
- Installation: in ceiling void/dado trunking
- Resistive loads only: incandescent bulb 500 W HV halogen 500 W
- One relay occupies 10 DALI loads

Relay output
EMOTION-1TRUK 1 output
Accessory
RC-GLIED

L/W/H Order no.

41/30/11 22 066 047

70 088 118



DALI power supply, installed in luminaire/ceiling

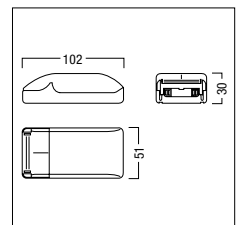


- Power supply of 1 DALI line with a max. of 100 DALI loads (1 DALI load: 2mA)
- Installation: in ceiling void

Bus supply
EMOTION-BV2 Power supply

L/W/H Order no.

102/30/51 22 154 729



DALI power supply, switch cabinet

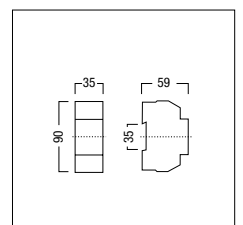


- Power supply of 1 DALI line with a max. of 100 DALI loads (1 DALI load: 2mA)
- Power loss: < 6 W
- Installed on EN rail 35 mm

Bus supply
EMOTION-BVS2 Power supply

L/W/H Order no.

35/90/59 22 154 276



Relay output (DALI), switch cabinet



- Control of luminaires and other loads for mains voltages up to a maximum of 230/240 V
- 4 relay outputs, each max. 10 A (CosPHI = 1)
- A, PAR, QT 4 x 2000 W T16/T26 with low-l. ballast 4 x 920 W (parallel p.f. corrected) TC with low-l. ballast 4 x 800 W (parallel p.f. corrected) T16/T26/TC with electr. ballast 4 x 10 A LV with transformer 4 x 10 A HIT, SDW-T, HS, HM 4 x 800 W
- Installed on EN rail 35 mm
- 1 relay is assigned to 1 DALI load
- Universal interference suppression filters recommended for inductive/capacitive loads (part no. 70 088 118)

Relay output

EMOTION-4RUKS 4 outputs

L/W/H

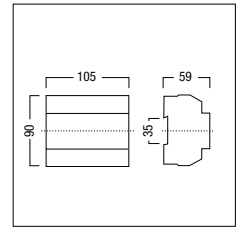
Order no.

105/90/59 22 154 262

Accessory

RC-GLIED

70 088 118



Sensor (light), surface-mount



- Light sensor (look out) for monitoring daylight coming into the room
- Power supplied via DALI line (EMOTION) or Control-In (DIMLITE)
- Installation: surface-mounted on ceiling
- EMOTION: does not occupy any DALI addresses
- When used in EMOTION installation, must be configured using EMOTION-Touch, part no. 22 154 510

Sensor

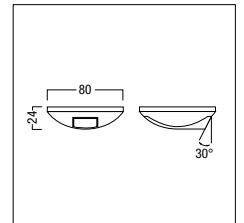
ED-EYE Light sensor

H/Ø

Order no.

24/80

22 154 682



Sensor (infrared, PIR), surface-mount/recessed



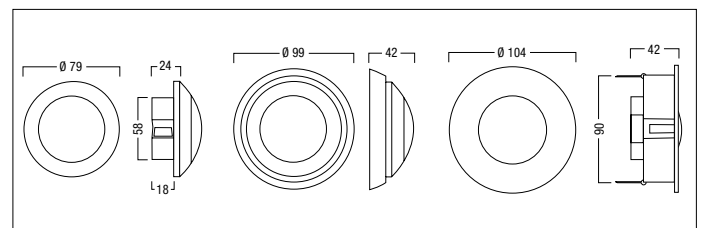
- Combined PIR sensor with integrated infrared interface
- Power supplied via DALI line (EMOTION) or Control-In (DIMLITE)
- Ceiling-mounted in Euro/standard single back box; fitting accessories for surface-mounting and recessed-mounting included
- When used in EMOTION installation, must be configured using EMOTION-Touch, part no. 22 154 510
- EMOTION: does not occupy any DALI addresses

Sensor

ED-SENS Präsens + infrared sensor

Order no.

22 154 506



EMOTION sensors

Sensor (infrared), surface-mount/recessed



- Infrared sensor for use with IRTOUCH remote control (part no. 22 154 450)
- Power supplied via DALI line (EMOTION) or Control-In (DIMLITE)
- Ceiling-mounted in Euro/standard single back box; fitting accessories for surface-mounting and recessed-mounting included
- When used in EMOTION installation, must be configured using EMOTION-Touch, part no. 22 154 510
- EMOTION: does not occupy any DALI addresses

Sensor

ED-IR Infrared sensor

Ø

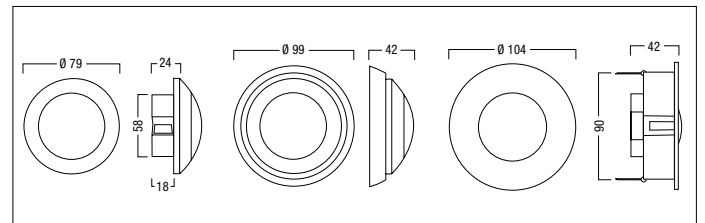
H

Order no.

104

42

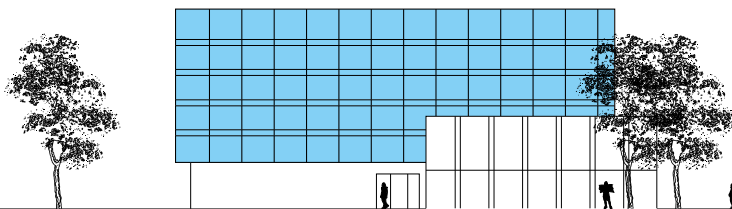
22 161 823



LUXMATE LITENET / PROFESSIONAL

high-end room management system with lighting and blinds control





The high-end room management systems combine 15 years' experience in lighting management with future-proof system standards. They flexibly respond to the building's specific conditions and the customer's personal requirements in the long run. A wide range of functions are available for any area of application. Modifications and extra functions can be added easily, also subsequently. Especially where intelligent functions such as daylight-based lighting control and blinds, or automatic compensation for ageing of luminaires ("Maintenance Control") are integrated, the resulting significant reduction of energy consumption ensures short payback periods.

LITENET economy

Package with up to 500 output addresses

- up to 500 output addresses
- no server required
- minimum installation and commissioning effort
- LITENET flexis N2 without rotating parts (wear-free)
- optional LITENET incontrol operating software



LITENET flexis N2
with server functionality



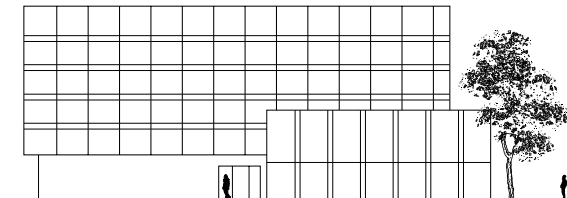
LITENET compact

Package with up to 2000 output addresses

- up to 2000 output addresses
- no server required
- minimum installation and commissioning effort
- LITENET flexis N3 in 19" rack
- fail-safe thanks to RAID 1 (disk mirroring)
- optional LITENET incontrol operating software
- BACnet und OPC open interfaces



LITENET flexis N3
with server functionality



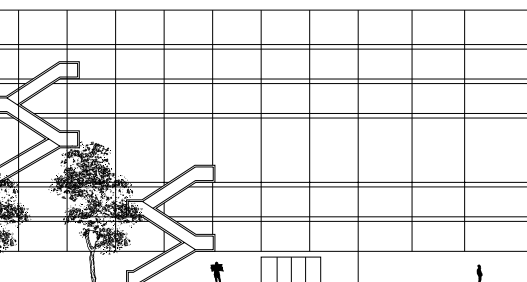
LITENET flexibel

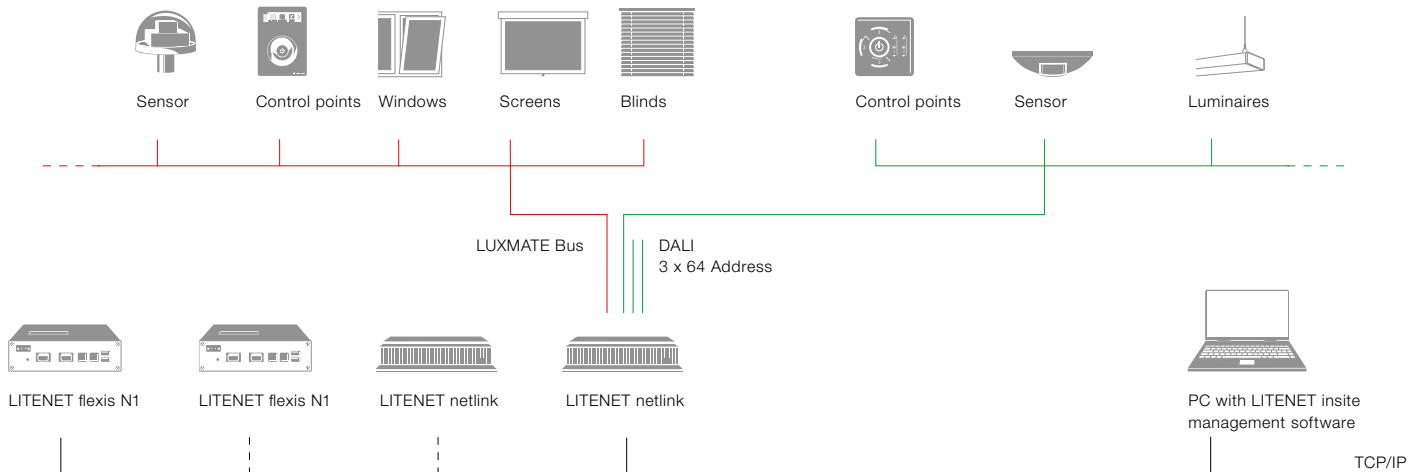
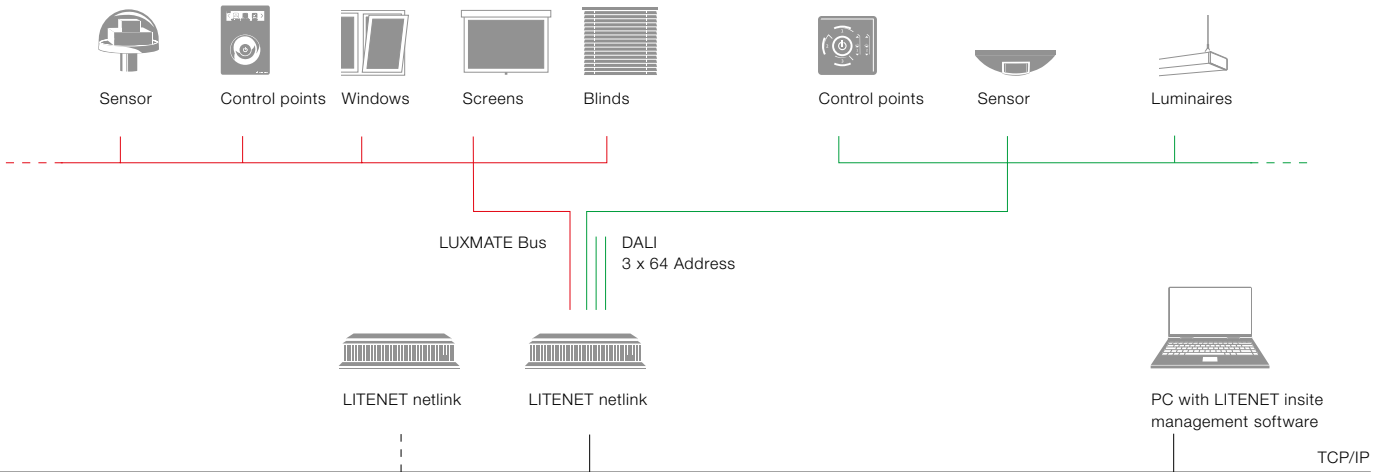
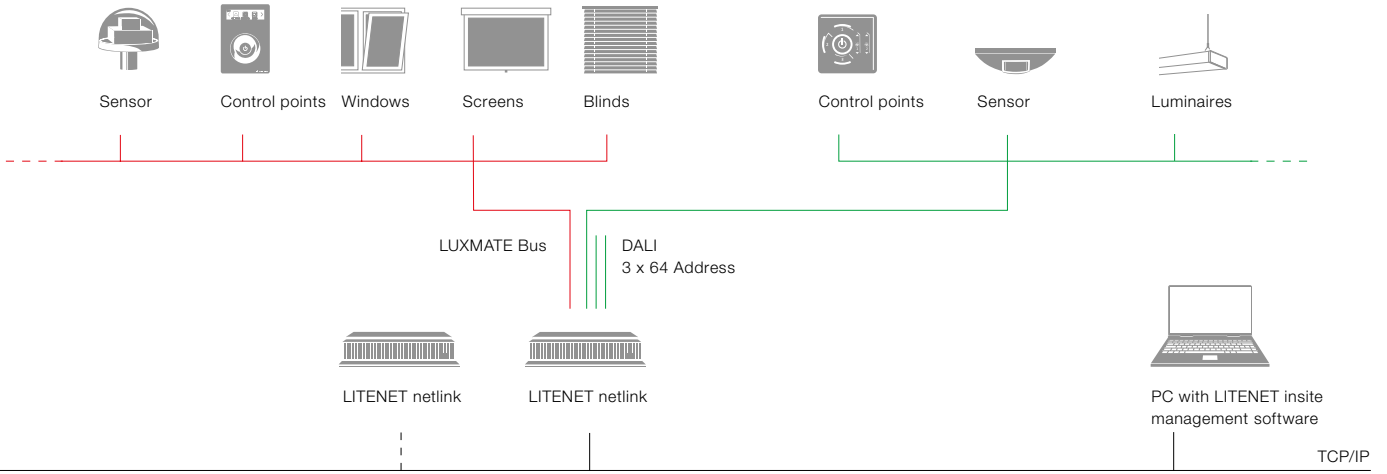
Package with up to 10.000 output addresses

- Between 5 000 – 10.000 output addresses (or more upon request)
- flexible, radially arranged network layout for any system topology
- can be cascaded as required
- LITENET flexis N1 installed in switch cabinet
- LITENET server is extremely fail-safe thanks to RAID 1 (disk mirroring)
- optional LITENET incontrol operating software
- BACnet und OPC open interfaces



LITENET server





LITENET automation

Room automation, basic package



- Basic package for versatile LITENET system
- Includes LITENET insite single-user management software
- Includes LITENET server hardware and server software
- Includes LM-TLM daylight measuring head

500 LUXMATE outputs

LITENET basis set economy 22 185 233

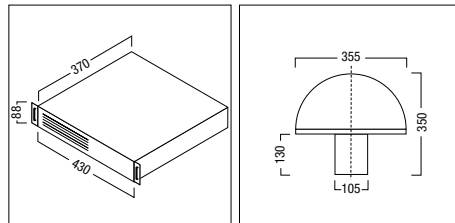
2000 LUXMATE outputs

LITENET basis set compact 22 185 232

10,000 LUXMATE outputs

LITENET basis set flexible 22 185 231

If using a LITENET basic set flexible, the LITENET flexis N1 automation computer must be ordered separately.



Order no.

Room automation controller 1000



- Network-compatible automation processor for lighting and blinds for up to 1000 LUXMATE outputs
- Installed on EN rail 35 mm
- Disabled functions enabled via flex-credits, if required
- Credits can be withdrawn at any time and used for other functions in the LITENET installation

Room automation system

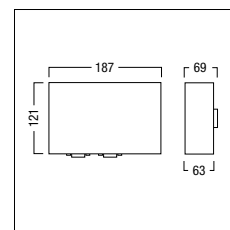
LITENET flexis N1 130/189/73 22 161 749

Accessory

SUP24VDC/1,5A 24V power supply 22 161 814

L/W/H

Order no.



Room automation server



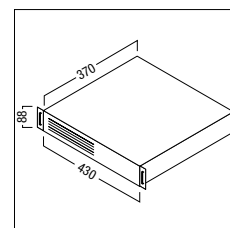
- Network server for higher-order management of installation, user and device data of a LITENET installation
- Central logging of consumption data, alarm lists, log files and emergency lighting test books
- Communication system enables information management by email or fax
- RAID1 fail-safe reliability
- Optional OPC or BACnet interfaces
- Remote maintenance access
- Case suitable for 19" rack-mounting or as desktop unit
- No basic software

Room automation system

LITENET server 482/472/88 22 154 459

L/W/H

Order no.



Room automation, Flexis N2



- Network-compatible automation processor for lighting and blinds for up to 500 LUXMATE outputs
- Includes server components (software); no server (hardware) required
- Includes LITENET insite single-user management software
- Installed on EN rail 35 mm
- Optional PC control via LITENET incontrol
- Disabled functions enabled via flex-credits, if required
- Credits can be withdrawn at any time and used for other functions in the LITENET installation

Room automation system

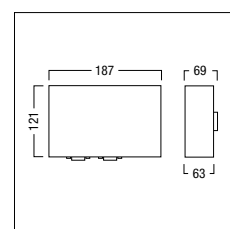
LITENET flexis N2 187/121/63 22 154 456

Accessory

SUP24VDC/1,5A 24V power supply 22 161 814

L/W/H

Order no.



Room automation, Flexis N3

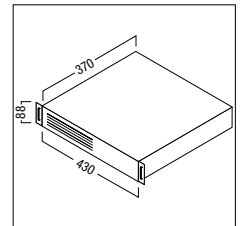


- Network-compatible automation processor for lighting and blinds for up to 2000 LUXMATE outputs
- RAID1 fail-safe reliability
- Includes server components (software); no server (hardware) required
- Includes LITENET insite single-user management software
- Remote maintenance access
- Case suitable for 19" rack-mounting or as desktop unit
- Optional PC control via LITENET incontrol
- Optional OPC or BACnet interfaces
- Disabled functions enabled via flex-credits, if required
- Credits can be withdrawn at any time and used for other functions in the LITENET installation

Room automation system
LITENET flexis N3

L/W/H Order no.

482/472/88 22 154 644



Credits



- Inactive LITENET functions can be enabled as required via Flex-Credits (management software), e.g. daylight-based automation, enabling DOD luminaires, emergency lighting visualisation etc.
- Credits can be withdrawn at any time and used for other functions in the LITENET installation

Credits

LITENET flex-credit

Order no.

22 154 449

Room automation LITENET SOFTWARE only



- Software for installing LITENET automation components on the customer's own hardware
- All LITENET flexis Nx and LITENET server automation components available as software only. Can run on all standard operating systems (precise requirements are given in the datasheets)

Licences

LITENET flexis N1 Software for up to 1000 LUXMATE outputs	22 185 272
LITENET flexis N2 Software for up to 500 LUXMATE outputs	22 185 273
LITENET flexis N3 Software for up to 2000 LUXMATE outputs	22 185 274
LITENET flexis N4 Software for up to 2500 LUXMATE outputs	22 185 275
LITENET server Software	22 185 276

Order no.

LITENET operation

Software (planning)

Order no.



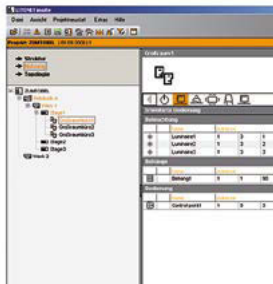
- Offline software (freeware) for planning a LITENET installation
- Ste-by-step creation of building structure
- Easy configuration and parameterisation of installation features via predefined room profiles
- The design result is a LITENET project file, which is imported into the installation by the service engineer

Software

LITENET inbuild (Freeware)	22 154 442
----------------------------	------------

Management software

Order no.



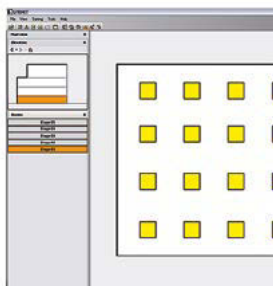
- Single-user licence for monitoring, configuration and central control of a LITENET installation
- Display of fault signals
- Analysis and installation documentation
- Installation on any workstation within the network

Software

LITENET insite	22 154 444
----------------	------------

Software (schematic graphical user interface)

Order no.



- Schematic visualisation (LITENET Graphics basic)
- Central visualisation, monitoring and control of a LITENET installation
- Continuous zoom for flexible navigation
- Makes it quick and easy to locate problems
- Integral editor for customizing building views
- Licence packages for 500/2000/10,000 addresses

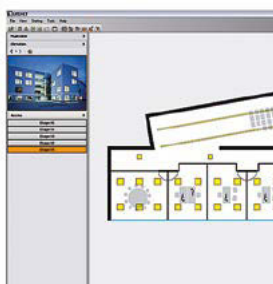
Software

LITENET graphics basic 10000	22 162 200
LITENET graphics basic 2000	22 162 199
LITENET graphics basic 500	22 161 894

Design service available on request for designing the graphical visualization interface

Software (authentic graphical user interface)

Order no.



- Diagrams, photos and CAD drawings provide excellent visualization of real-life situation
- Central visualisation, monitoring and control of a LITENET installation
- Continuous zoom for flexible navigation
- Integral layer manager
- Makes it quick and easy to locate problems
- Integral editor for customizing building views
- Licence packages for 500/2000/10,000 addresses

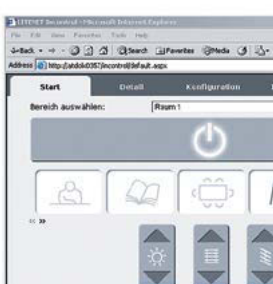
Software

LITENET graphics advanced 10000	22 162 203
LITENET graphics advanced 2000	22 162 202
LITENET graphics advanced 500	22 162 201

Design service available on request for designing the graphical visualization interface

Operating software (running on network PC)

Order no.



- Browser software for intuitive control of LUXMATE areas
- Up to 20 scenes can be called up
- Interface design (Skin) can be changed
- For PC and MAC
- Installation on LITENET server
- Licence packages for 50/200/500/1000 users

Software

LITENET incontrol 1000	22 154 457
LITENET incontrol 50	22 154 445
LITENET incontrol 200	22 154 447
LITENET incontrol 500	22 154 448

[...] Shared properties BACnet and OPC

- Software interface between LITENET and a building services control system
- Definition and transfer of data points
- Transfer of information and functions relating to system operation, status display, display of alarms and events and emergency lighting integration

BACnet

Order no.



- [...]
- Requirement for LITENET integration using BACnet standard

Software

LITENET BACnet 500	22 161 690
LITENET BACnet 1000	22 161 692
LITENET BACnet 3000	22 161 691

OPC

Order no.



- [...]
- Must be present in order to integrate LITENET via the OPC standard

Software

LITENET OPC 500	22 154 685
LITENET OPC 1000	22 154 686
LITENET OPC 3000	22 154 687

Touchpanel

Order no.



- Software licence for interface to touch-panel made by another manufacturer
- Ethernet (TCP/IP) communication, text-based
- 1 licence per installation
- Max. 5 touch-panels per Flexis controller

Touchpanel

LITENET TP-NetCom	22 154 716
-------------------	------------

DALI Gateway, switch cabinet

L/W/H

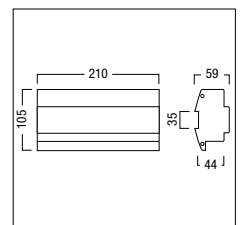
Order no.

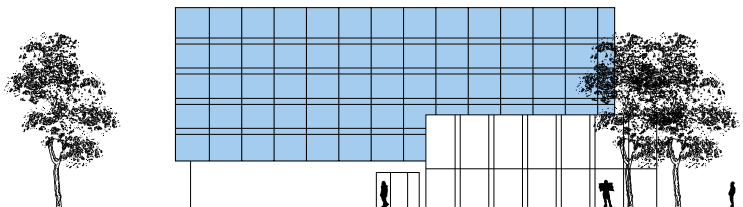


- For individual control of up to 3 x 64 DALI-compatible dimmable ballasts that can be assigned any LUXMATE address.
- With integral DALI power supplies
- With integral LM-BUS power supply
- Ethernet (TCP/IP) network connection
- Installed on EN rail 35 mm
- For connecting an ED-SENS or ED-EYE sensor

DALI output

LITENET netlink	210/105/59	22 154 451
-----------------	------------	------------





LUXMATE PROFESSIONAL

High-end room management using
the LUXMATE bus system

LUXMATE PROFESSIONAL controls artificial lighting
and blinds in perfect harmony. It handles small building
units just as reliably as large building complexes.

[...] Shared properties Room automation

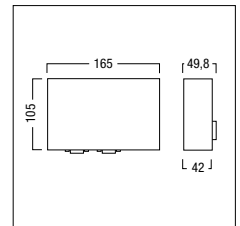
- Automation unit for daylight-based control of artificial light and blinds
- Time management with conditions link
- Flexible super-room function
- Status information and alarm lists
- Optional licences can be downloaded for additional functions

Room automation 250



- [...]
- Up to 250 LUXMATE outputs can be automated
- Includes all necessary LRA-RMA licences
- Included in LRA-250 package: 1 x LRA-250 automation unit, 1 x LM-TLM external daylight sensor, 1 x LM-PCSIR interface, 1 x PC-RS232 interface cable, 1 x SUP24 V DC/1.5A power pack
- Installed on EN rail 35 mm

	L/W/H	Order no.
Room automation system		
LRA-250 Package	187/121/63	22 161 934
Licences		
LRA-BMS Interface for connecting an external system		22 147 157
LRA-RMA Use of an output under automatic control		22 147 014
Accessory		
Modem USB ISDN - Extern		22 162 046
PC-ANYWHERE		72 008 581

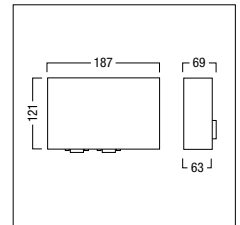


Room automation 500



- [...]
- Up to 500 LUXMATE outputs can be automated
- Installed on EN rail 35 mm
- The minimum quantity for first orders of LRA-RMA licences is 100 units, for subsequent expansion 50 units. No daylight-based and time optimisation possible without LRA-RMA licences.

	L/W/H	Order no.
Room automation system		
LRA-500	187/121/63	22 161 933
Licences		
LRA-BMS Interface for connecting an external system		22 147 157
LRA-RMA Use of an output under automatic control		22 147 014
Accessory		
Modem USB ISDN - Extern		22 162 046
PC-ANYWHERE		72 008 581
SUP24VDC/1,5A 24V power supply		22 161 814

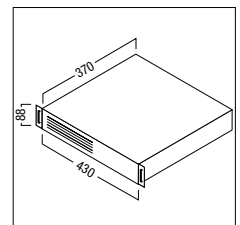


Room automation 1500/2500/5000



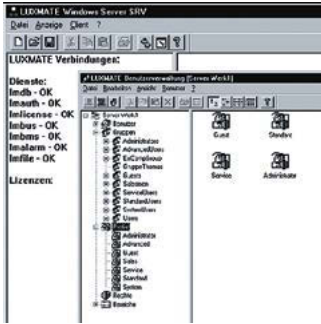
- [...]
- Case suitable for 19" rack-mounting or as desktop unit
- The minimum quantity for first orders of LRA-RMA licences is 100 units, for subsequent expansion 50 units. No daylight-based and time optimisation possible without LRA-RMA licences.

	L/W/H	Order no.
for 1500 LUXMATE outputs		
LRA-1500 with ISDN modem	482/472/88	22 162 053
for 2500 LUXMATE outputs		
LRA-2500 with ISDN modem	482/472/88	22 161 681
Licences		
LRA-BMS Interface for connecting an external system		22 147 157
LRA-RMA Use of an output under automatic control		22 147 014
Accessory		
PC-4NETG 4-way network switch		22 147 099



PROFESSIONAL automation

LUXMATE server



- Personal computer with LAN interface for connection to the LUXMATE system
- Software for running application programmes in customer networks
- Exchange of data between management and automation level
- Hardware matched to LUXMATE requirements
- By means of these software components, LUXMATE can be linked to TCP/IP networks or central HVC units.

	L/W/H	Order no.
Personal Computer		
PC-LAN19 With ISDN modem	482/472/88	22 161 935
PC-LAN19A with analog modem	482/472/88	22 162 070
Software		
LMW-SRV Server software		20 975 190
Licences		
LMW-SRVL Software licence LUXMATE server (local)		22 145 519
SRV-BMS Building management licence on server		22 145 525

[...] Shared properties Software (operation)

- Windows software for intuitive control of LUXMATE areas
- Up to 20 scenes can be called up
- Interface design (Skin) can be changed
- Standard interface can be adjusted to area (scene icons, output lists etc.)

Operating software (running on local PC)



- [...]
- Control of all building services in the area
- Local installation on PC
- Connection of the PC to the LUXMATE bus via LM-PCSIX (PC interface, desktop housing) and RS232 cable (both included in the package supplied)

Software	Order no.
LMPC-ISKIN	22 154 288

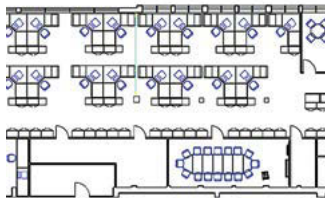
Operating software (running on network PC)



- [...]
- Control of all building services in the area assigned to a user
- Control via the Intranet
- Central configuration and assignment to areas
- Installed on web server
- Single-user licence
- A max. of 100 licenses possible (more licenses upon request)
- Simultaneous access by a max. of 100 users (more users upon request)

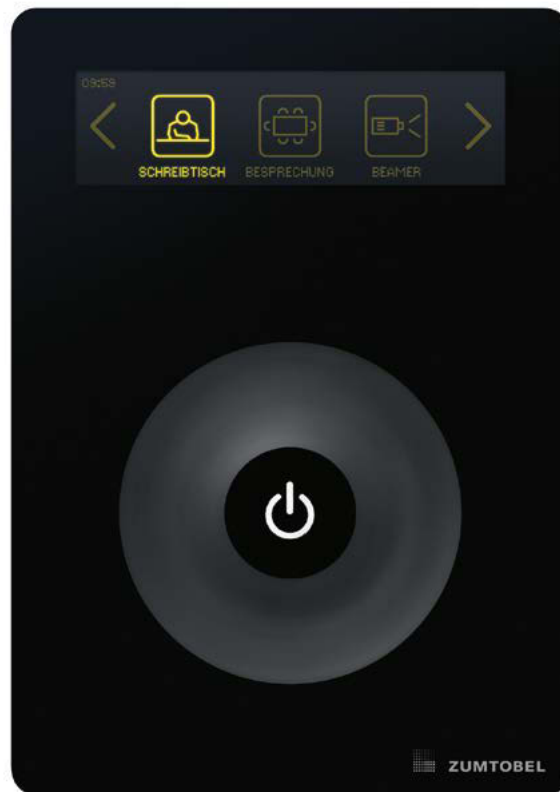
Software	Order no.
LMW-ISKIN Licence for 1 client	22 154 030

Software (graphical overview)



- Central monitoring and control of LUXMATE and ONLITE installations
- Extremely easy navigation via building views/zoom levels on the screen
- All system events logged by means of alarm list
- ONLITE: automatic running of function and duration tests
- Editor for independent creation/change of building views in the plan file
- GO-DP: minimum quantity for first order: 100 off

Basic licences	Order no.
LMW-1GO Software licence, 1 user	22 145 531
LMW-3GO Software licence, 3 users	22 145 547
LMW-5GO Software licence, 5 users	22 145 553
Extension licences	
GO-ELZ Expansion licence (2 additional users)	22 145 566
LMW-GOE Editor for Graphical User Interface	24 046 228
Service	
GO-DP Data point for graphical user interface	22 154 517



LUXMATE system components

LUXMATE system components make it possible to control luminaires and blinds, send control unit and sensor commands, and enable bus communication among units. In building automation, these are the field level units.

The units can be operated in the LITENET and PROFESSIONAL automation systems. They can also be operated as an autonomous lighting control system without automation. This provides the basis for the philosophy of decentralised control, according to which key functions and setting values can be run and stored in the respective field units.

Touch panel, wall-recessed



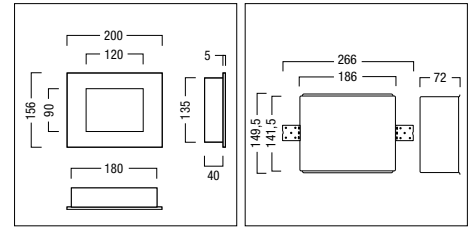
- Control panel for intuitive control and programming of LUXMATE rooms
- Control of all services in a room
- Standard interface can be adjusted to room (scene icons, room representation etc.)
- Up to 20 scenes can be configured and called up
- easy configuration of sequences
- Data backup by SD/MMC card
- 5.7" display, resolution 320 x 240 dots
- plastic frame, silver colour
- Colour TFT (LM-CPO, LM-CPA) or monochrome LCD touch screen (LM-MPO)
- LM-CPA with enter/leave button
- LM-XPO for central control of up to 12 rooms

Touchpanel

	L/W/H	Order no.
LM-CPA Colour TFT with enter/leave button	200/156/40	22 146 153
LM-CPO Colour TFT	200/156/40	22 154 195
LM-XPO Colour TFT	200/156/40	22 154 405

Accessory

MKXP Touchpanel installation box		22 154 482
----------------------------------	--	------------



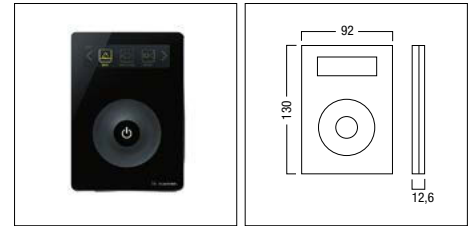
LM-CIRIA wall-recessed control point



- Control panel for intuitive control and programming of LUXMATE rooms
- Up to 20 scenes can be configured and called up
- Can be used to operate up to 10 devices (lighting, blinds etc.)
- User-configurable display (scene icons, text etc.)
- Fully enclosed housing with black-and-white glass front and plastic surround in black, white and chrome
- Operated by touching the glass surface of the OLED display (capacitive sensor); contains dimming ring and ON-OFF button
- Installed in single Euro box to DIN 0606 of minimum depth 50mm

Control device

	L/W/H	Order no.
LM-CIRIA BK black	130/92/50	22 162 348
LM-CIRIA WH white	130/92/50	22 162 349



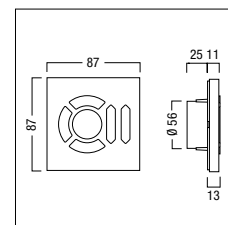
System components, operation

LM Circle control point, square-edge design, wall-recessed

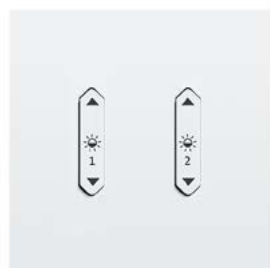


- Control point for running 3 scenes, and for controlling light level and blinds
- Printed with neutral symbols "1", "2" and "3" for general applications
- Certain auxiliary functions such as saving of scenes, for instance, can be enabled
- Supplied from external 24 V DC power pack or via LUXMATE bus (counts as 14x bus load for LM-BV bus supply etc.)
- Installed in single Euro socket, dimensions to DIN 0606 (Ø 60 mm, depth 42 mm), or UK metal back-box (not included with product)
- Variant (V): customised combination of key sets from the intuitive LUXMATE icon collection (see data sheet)

	L/W/H	Order no.
Light level and drapes		
LM-CCB 1/2/3 Li/Be anthracite	87/87/13	22 154 677
LM-CCS 1/2/3 Li/Be silver	87/87/13	22 154 675
LM-CCW 1/2/3 Li/Be white	87/87/13	22 154 676
Variant		
LM-Cxx (V)		28 000 006
Accessory		
INTO-1CCX mounting frame for 25mm plasterboard wall		22 161 751
INTO-CCX TOOL Pull-off tool		22 161 893
SUP24VDC/1,5A 24V power supply		22 161 814

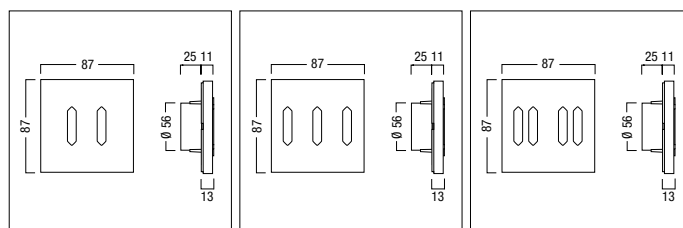


LM rocker switch, square-edge design, wall-recessed



- Control unit for 2, 3 or 4 individual light groups
- Printed with light symbol
- Power supply via external 24 V DC power supply or via LUXMATE bus (3-times bus load for LM-BV bus supply etc.)
- Installed in single Euro socket, dimensions to DIN 0606 (Ø 60 mm, depth 42 mm), or UK metal back-box (not included with product)
- Option: switches can be printed with symbols for blinds and combination of lighting and blinds groups; symbols must be specified with order

	L/W/H	Order no.
2 rocker-switches, light		
LM-RCB2 Li anthracite	87/87/13	22 161 843
LM-RCW2 Li white	87/87/13	22 161 831
2 rocker-switches, option		
LM-RCB2 (V) anthracite	87/87/13	22 161 844
3 rocker-switches, light		
LM-RCB3 Li anthracite	87/87/13	22 161 884
3 rocker-switches, option		
LM-RCB3 (V) anthracite	87/87/13	22 161 885
LM-RCW3 (V) white	87/87/13	22 161 834
4 rocker-switches, light		
LM-RCB4 Li anthracite	87/87/13	22 161 886
4 rocker-switches, option		
LM-RCB4 (V) anthracite	87/87/13	22 161 887
LM-RCW4 (V) white	87/87/13	22 161 836
Accessory		
INTO-1CCX mounting frame for 25mm plasterboard wall		22 161 751
INTO-CCX TOOL Pull-off tool		22 161 893
SUP24VDC/1,5A 24V power supply		22 161 814



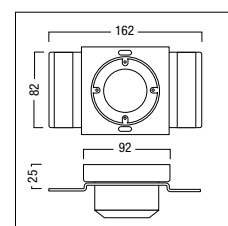
Mounting frame for Circle control point



- Installation accessory for flush-fitting one square-edge CIRCLE control point
- Stainless steel recessed frame
- With adjusting screws for precise horizontal alignment after installing in unfinished wall structure
- Standard Ø 68 mm cavity wall socket included
- For 25mm plasterboard wall
- Constant shadow gap between control point and wall cut-out
- Cutout size 92 x 92 mm

	Order no.
Installation box for flush-fitting control point in wall	
INTO-1CCX mounting frame for 25mm plasterboard wall	22 161 751
Extractor tool	
INTO-CCX TOOL Pull-off tool	22 161 893

Please order extraction tool separately for non-scratch removal of control unit



[...] Shared properties Circle control point, rounded-edge, wall-recessed

- Printed with neutral symbols “1”, “2” and “3” for general applications
- Certain auxiliary functions such as saving of scenes, for instance, can be enabled
- Installed in single Euro socket, dimensions to DIN 0606 (Ø 60 mm, depth 42 mm), or UK metal backbox (not included with product)

LM Circle control point, rounded-edge design, wall-recessed



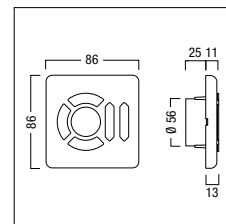
- [...]
- Control point for running 3 scenes, and for controlling light level and blinds
- Supplied from external 24 V DC power pack or via LUXMATE bus (counts as 14x bus load for LM-BV bus supply etc.)

Light level and drapes

	L/W/H	Order no.
LM-CSB 1/2/3 Li/Be anthracite	86/86/13	22 161 829
LM-CSS 1/2/3 Li/Be silver silver (RAL 9007)	86/86/13	22 154 213
LM-CSW 1/2/3 Li/Be white white (RAL 9003)	86/86/13	22 154 211

Accessory

SUP24VDC/1,5A 24V power supply		22 161 814
--------------------------------	--	------------



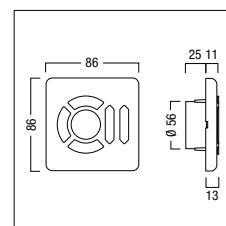
ED Circle control point, rounded-edge design, wall-recessed



- [...]
- Control point for running 3 scenes and controlling the lighting level
- Power supply via DALI line (3 DALI loads)
- No DALI addresses occupied
- For use with LM-3DALIS and LITENET netlink

Light level (2x)

	L/W/H	Order no.
ED-CSB 1/2/3 Li1/Li2 anthracite	86/86/13	22 161 827
ED-CSS 1/2/3 Li1/Li2 silver silver	86/86/13	22 154 422
ED-CSW 1/2/3 Li1/Li2 white white (RAL 9003)	86/86/13	22 154 427



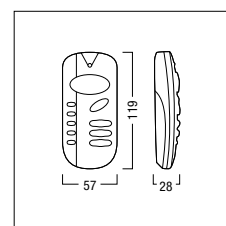
Infrared remote control



- For easy configuration and control of a LUXMATE room
- ON / OFF / dimming (1–100 %)
- 3 scenes can be configured and called up
- Control of 5 services as required
- Encoding switch for IR channel allocation
- Plastic housing, halogen-free, grey (RAL 7021)
- Includes wall bracket and batteries

Remote control

	L/W/H	Order no.
IRS Infrared remote control	119/57/28	20 975 492
IRTOUCH Infrared remote control for ED-SENS sensor	119/57/28	22 154 450



System components, input devices

[...] Shared properties Input (momentary-action/standard switch...) control cabinet

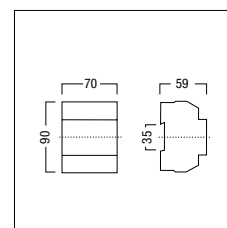
- 4 inputs for momentary-action and standard switches, motion detectors and other contact-makers
- Change between "Absent" and "Present" scenes
- For assigning inputs to rooms or individual groups
- In the LM-4UAS multifunction unit, the functions and properties of the inputs can be modified using the additional commissioning tool
- Adjustable switch-off delay
- Installed on EN rail 35 mm
- Options: different functions and properties can be specified when ordering

Input (momentary-action switch/standard switch etc.) 230V, switch cabinet



- [...]
- For 230/240V AC mains voltage

	L/W/H	Order no.
4 motion-detector inputs for scene changing		
LM-4AWS	70/90/59	22 154 488
Four universal inputs		
LM-4UAS	70/90/59	22 154 732
Variant		
LM-4UAS (V)	70/90/59	22 154 731

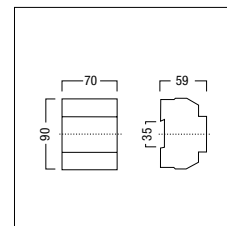


Input (momentary-action switch/switch) 24V, switch cabinet



- [...]
- For 24V AC operating voltage

	L/W/H	Order no.
Four universal inputs		
LM-4UAS2 24V AC	70/90/59	22 154 734
Variant		
LM-4UAS2 (V) 24V AC	70/90/59	22 154 733

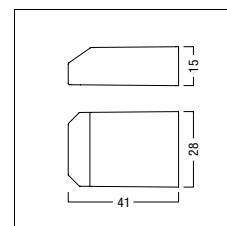


4-way input (switch, switch-dim, switch-changeover), recessed



- Switch, switch/dim, switch-changeover input with 4 independent inputs for running scenes and dimming using conventional momentary-action switches
- Momentary-action switch input for opening and closing windows using conventional (dual) mom-action switches
- Function can be configured for each input
- Installed in standard flush socket
- Power cable 30 cm max. (not included)

	Order no.
LM-SxED 4-way	22 185 326

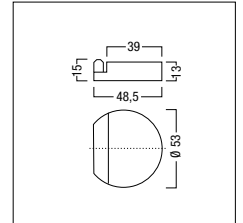


Universal input (momentary-action switch), installed in luminaire/ceiling



- For electronic and EIB/KNX switch 1 x – 4 x with LED
- Change between “Absent” and “Present” scenes
- Dimming of room lighting or a group of luminaires
- Feedback via LED key switch
- Assignment to room or group of rooms
- Supply via external 24 V DC power pack or via LUXMATE bus (13-fold bus load for LM-BV bus supply etc.)
- Connection via 10-pin PCB connector
- Installed behind switch in back box (35 mm)

	H/Ø	Order no.
Universal input		
LM-4UAD	15/53	22 154 508
Variant		
LM-4UAD (V)	15/53	22 154 515
Accessory		
MBUE Mounting plate for EIB momentary-action switch		22 154 516
SUP24VDC/1,5A 24V power supply		22 161 814

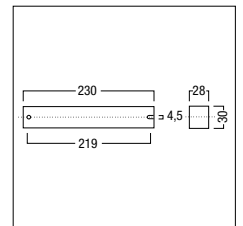


Infrared input, installed in luminaire/ceiling



- For converting infrared signals of a maximum of 2 IRS infrared remote control units into LUXMATE bus commands
- Installation: in luminaire/ in the ceiling void

	L/W/H	Order no.
Infrared input		
LM-IRB	230/30/28	22 114 219
IREC Infrared sensor, surface-mount	80/80/26	22 114 587
IRS Infrared remote control	119/57/28	20 975 492

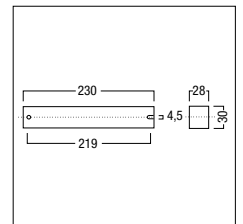


DALI control unit (LM-bus), installed in luminaire/ceiling



- For individual control up to 64 DALI-compatible control gears to which any LUXMATE address may be assigned.
- Installation: in luminaire/ in the ceiling void

	L/W/H	Order no.
Control device		
LM-DALI	230/30/28	22 146 950

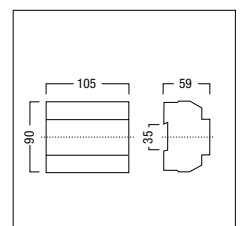


DALI control module (LM-bus), switch cabinet



- For individual control up to 64 DALI-compatible control gears to which any LUXMATE address may be assigned.
- Installed on EN rail 35 mm

	L/W/H	Order no.
Control device		
LM-DALIS	105/90/59	22 146 963



System components, light actuators

DALI control module 3x (LM-bus), switch cabinet

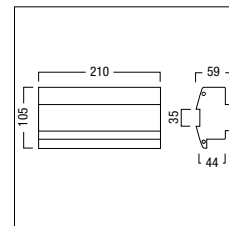


- For individual control of up to 3 x 64 DALI-compatible dimmable ballasts that can be assigned any LUXMATE address.
- With integral DALI power supplies
- Installed on EN rail 35 mm
- For connecting an ED-SENS or ED-EYE sensor

Control device
LM-3DALIS

L/W/H Order no.

210/105/59 22 154 455



DALI control module (LM-bus, momentary-action switch), switch cabinet

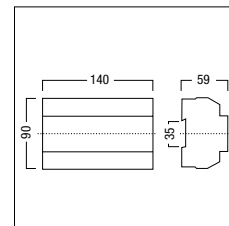


- For connecting up to 64 DALI dimmable ballasts per output
- All DALI ballasts connected to the same output are switched and dimmed synchronously
- Key switch input for calling up scenes
- Installed on EN rail 35 mm

Control device
LM-3DLIS 3 DALI outputs

L/W/H Order no.

140/90/59 22 154 096



DSI control module (LM-bus), switch cabinet

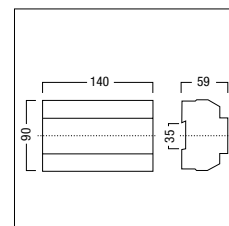


- For connection of a max. of 100 digital control gear per output
- Operated manually by using momentary-action switch
- Installed on EN rail 35 mm

Control device
LM-3DSIS 3 DSI outputs

L/W/H Order no.

140/90/59 22 114 395



DSI control unit (LM-bus), installed in luminaire/ceiling

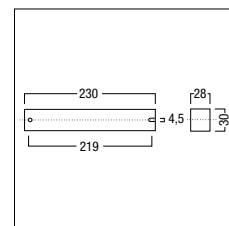


- For connection of a max. of 10 digital control gear per output
- Installation: in luminaire/ in the ceiling void
- LM-BLS: to control light centre of Balanced Light luminaires

Control device
LM-DSI 1 output

L/W/H Order no.

230/30/28 20 975 301



Analogue control module (LM-bus), switch cabinet

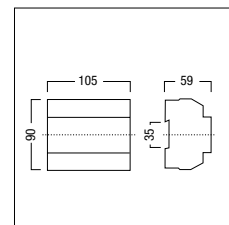


- For control of 2 mutually independent luminaire groups with analog control gear
- Additional 16 A switching contact per output
- Installed on EN rail 35 mm

Control device
LM-2ANAS

L/W/H Order no.

105/90/59 22 115 166



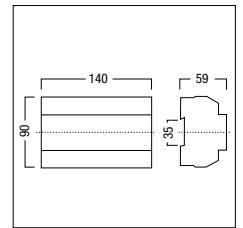
Phase dimmer (LM-bus) , switch cabinet



- Phase dimmer with a max. of 1000 VA
- Controlled directly via LUXMATE bus
- Installed on EN rail 35 mm

Phase-control dimmer

	L/W/H	Order no.
LM-PAD 1000VA TRAILING edge control	140/90/59	22 115 095
LM-PD 1000VA LEADING edge control	140/90/59	22 115 089



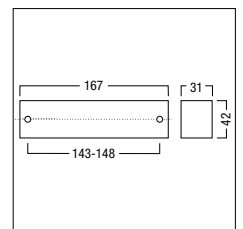
Phase dimmer (DALI/DSI/momentary-action switch), installed in luminaire/ceiling



- Phase dimmer up to 500 VA max.
- Automatic load recognition (leading/trailing edge control)
- Control via DALI/DSI signal or momentary action switch
- Installation: in luminaire/ in the ceiling void

Phase-control dimmer

	L/W/H	Order no.
APDX-500 leading / trailing edge	167/42/31	22 154 224



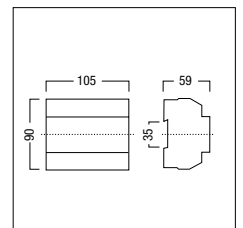
Phase dimmer (DALI/DSI/momentary-action switch), switch cabinet



- Phase dimmer with a max. of 1000 VA
- Automatic load recognition (leading/trailing edge control)
- With Preset function: stores and calls up any light level
- Control via DALI/DSI signal or momentary action switch
- Installed on EN rail 35 mm

Phase-control dimmer

	L/W/H	Order no.
APDS-1000 leading / trailing edge	105/90/59	22 154 223



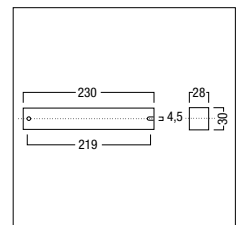
Relay output (LM-bus), installed in luminaire/ceiling



- For switching luminaires and electrical loads
- Installation: in luminaire/ in the ceiling void
- LM-2RUK with 2 independently switchable contacts
- Max. total current load of both contacts 8 A

Relay output

	L/W/H	Order no.
LM-1RUK 1 output	230/30/28	22 115 010



System components, light actuators

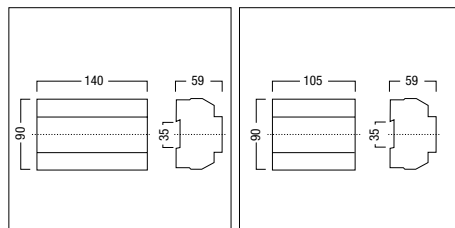
Relay output (LM-bus), switch cabinet



- For switching luminaires and electrical loads
- Installed on EN rail 35 mm
- LM-3RUK with 3 independently switchable contacts, 16 A each
- LM-4RUKS with 4 separately switchable contacts, 10 A each (cosPhi = 1)

Relay output

	L/W/H	Order no.
LM-3RUKS 3 outputs	140/90/59	20 735 397
LM-4RUKS 4 outputs	105/90/59	22 154 120



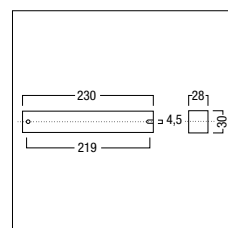
DSI amplifier, installed in luminaire



- For amplification of the DSI signal and connection of additional 50 DSI-controllable control gear
- Installation: in luminaire/ in the ceiling void

Amplifier

	L/W/H	Order no.
DSI-V	230/30/28	20 975 705



DALI control unit (LM-bus, sensor, PD), installed in luminaire/ceiling



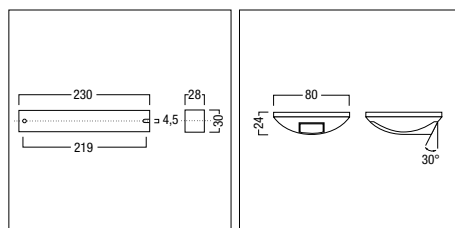
- For individual rooms, for direct daylight-based control of up to 2 x 10 DALI dimmable ballasts
- All DALI ballasts connected to the same output are switched and dimmed synchronously
- Presence detector can be connected
- Installation: in luminaire/ in the ceiling void

Control device

	L/W/H	Order no.
LM-2TL DALI	230/30/28	22 146 131

Accessory

LSD Light sensor		20 731 906
------------------	--	------------



DALI control module (LM-bus, sensor, momentary-action switch, switch), switch cabinet



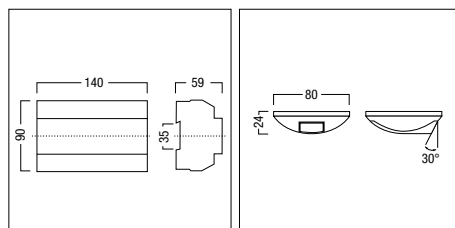
- For individual rooms, for local daylight-based control of a max. of 3 x 64 DALI-compatible control gear
- All DALI ballasts connected to the same output are switched and dimmed synchronously
- Operated manually by using momentary-action switch
- Additional connections for: ON/OFF, manual/automatic and dimming keys
- Installed on EN rail 35 mm

Control device

	L/W/H	Order no.
LM-TLS DALI	140/90/59	22 154 141

Accessory

LSD Light sensor		20 731 906
------------------	--	------------



DSI/DALI control unit (LM-bus, momentary-action switch...), ceiling void

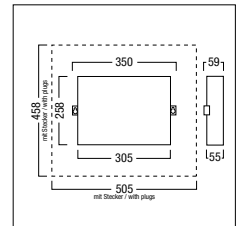


- For daylight-based control of up to 9 luminaire groups with up to 2 digital ballasts per group
- 2 outputs for emergency luminaires (self-contained)
- 1 input for LSD light sensor
- 2 inputs for PST presence detector or for manual control via double momentary-action switch or emergency lighting sensor
- Installation: in ceiling void

Control device
LM-TLX DALI RJ45 9 DALI outputs

L/W/H Order no.

305/258/55 22 154 489



Relay output (LM-bus, momentary-action switch...), ceiling void

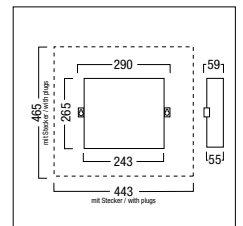


- For switching up to 9 luminaire outputs with an installed load of 250 W per luminaire output
- 2 outputs for emergency luminaires (self-contained)
- 2 inputs for PST presence detector
- 2 inputs for manual control via double momentary action switch or emergency lighting sensor
- Installation: in ceiling void

Relay output
LM-RLX 9 outputs

L/W/H Order no.

290/265/59 22 154 049



Relay output (LM-bus, momentary-action switch...) ceiling void

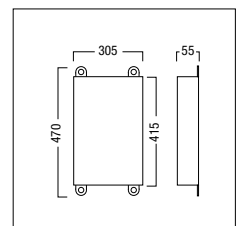


- For switching up to 4 luminaire outputs with an installed load of 500 W per luminaire output
- 2 outputs for emergency luminaires (self-contained)
- 2 inputs for PST presence detector
- 2 inputs for manual control via double momentary action switch or emergency lighting sensor
- Inputs and outputs are wired to screw terminals
- Installation: in ceiling void

Relay output
LM-RLX Hardwired 4 outputs

L/W/H Order no.

305/470/55 70 088 193



System components, motor actuators

Blinds control unit 4x (LM-bus), control cabinet

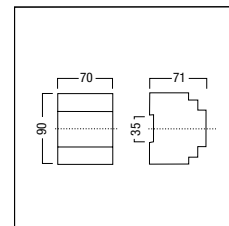
L/W/H Order no.



- For controlling 4 separate ac drives; suitable for window hangings fitted with 2 mechanical limit switches
- Travelling up / down and slat positioning relative to position of sun using higher-order automation systems
- Installed on EN rail 35 mm

Control device
LM-4JAS

72/91/72 22 162 346



Blinds control unit 2x (LM-bus, momentary-action switch)

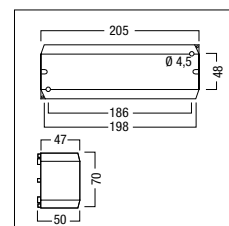
L/W/H Order no.



- For controlling 2 separate ac drives; suitable for window hangings fitted with 2 mechanical limit switches
- Two addressable, local momentary-action switch inputs
- Travelling up / down and slat positioning relative to position of sun using higher-order automation systems
- Installed on EN rail 35 mm

Control device
LM-2JASX

205/70/50 22 162 347



Blinds control module DC (LM-bus, momentary-action switch)

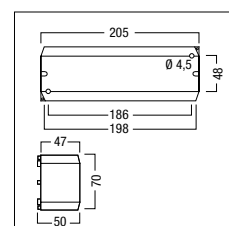
L/W/H Order no.



- For controlling 2 separate DC drives
- 2 lokal momentary-action switch inputs
- Installation: in ceiling void/ dado trunking
- Travelling up / down and slat positioning relative to position of sun using higher-order automation systems

Control device
LM-2JDCX

205/70/50 22 114 827



Relay output unit (LM-Bus), for installation in control cabinet

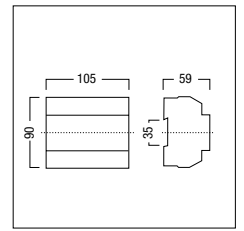
Order no.



- Relay output changeover 10 A (2 x) with two isolated changeover contacts for controlling external voltages (DC or AC voltages)
- Installed on EN rail 35 mm

LM-2WKS

22 185 306



Bus supply room, switch cabinet

L/W/H

Order no.

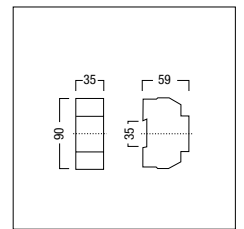


- For voltage supply to a bus domain with a maximum of 35 terminal points
- Installed on EN rail 35 mm

LM-BVS35

35/90/59

22 115 026



Bus supply building, switch cabinet

L/W/H

Order no.

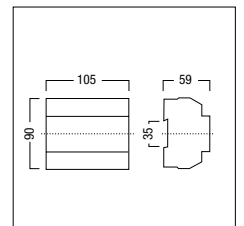


- For voltage supply to a bus domain with a maximum of 100 terminal points
- Installed on EN rail 35 mm

LM-BV

105/90/59

20 975 247



Bus coupler, switch cabinet

L/W/H

Order no.

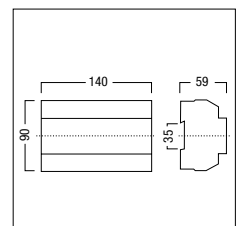


- For linking of bus domains
- Achieves electrical isolation of bus domains without data filtering
- Installed on EN rail 35 mm

LM-BK

140/90/59

20 735 369



Remote maintenance

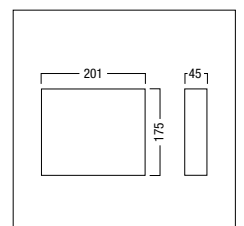
Order no.



- Encrypted VPN link with user name and password
- 8-Port 10/100 Fast Ethernet Switch
- Firewall

PC-ROUTER VPN VPN access via the Internet

22 162 071



System components, central devices

Interface, switch cabinet



- For connecting a LUXMATE field bus to the LRA-1500(x) or LRA-250 room automation processor
- Installed on EN rail 35 mm

Interface

LM-PCSIR

L/W/H

Order no.

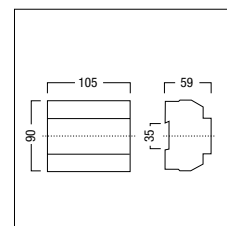
105/90/59

22 114 799

Accessory

PC-RS232 Interface cable

03 920 218



AV interface, switch cabinet



- For coupling touch panels and AV systems via RS232 interface
- Installed on EN rail 35 mm

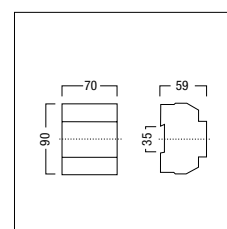
LM-SI03

L/W/H

Order no.

70/90/59

20 975 530



Time control module, switch cabinet



- For time-based control of the LUXMATE system
- Programmable date and time
- 70 switching times with selectable dissolve speeds
- Installed on EN rail 35 mm

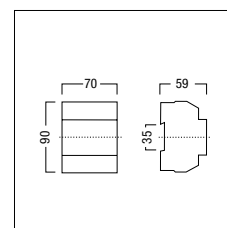
LM-ZSM

L/W/H

Order no.

70/90/59

20 735 510



Sequence control unit package, switch cabinet



- Package for configuration of dynamic sequences of scenes
- For configuring, copying and filing sequences
- Definition of start and stop times, number of runs, time intervals, dissolve speeds
- Control unit plus Windows configuration software plus RS232 cable
- Installed on EN rail 35 mm

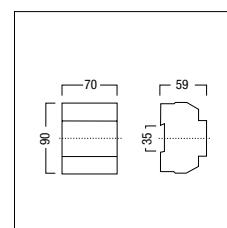
LM-iZSQ

L/W/H

Order no.

70/90/59

22 154 152



Radio aerial



- For LM-ZSM time control or LM-ZSQ sequencer control module
- Installation: outside the switch cabinet using 2 metal catches

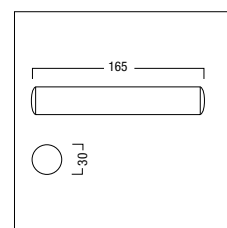
ZSMA

H/Ø

Order no.

165/30

20 975 225

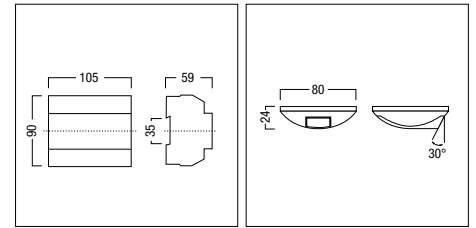


Sensor input (LSD), switch cabinet



- LM-4ILS sensor input 4x for LSD interior light sensors
- Unit pre-configured for connection of sensors
- Installed on EN rail 35 mm

	L/W/H	Order no.
Sensor input		
LM-4ILS for LSD indoor light sensor	105/90/59	22 154 258
Accessory		
Sensor LSD Light sensor		20 731 906

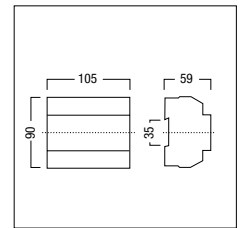


Sensor input (weather), switch cabinet



- Installed on EN rail 35 mm
- LM-4WZS 4-way sensor input for wind speed and direction, outside temperature and precipitation
- LM-SB: basic sensor package for installation of wind speed, wind direction, outside temperature and precipitation sensors. For each LM-4WZS, one basic package is required.

	L/W/H	Order no.
Sensor input		
LM-4WZS	105/90/59	22 154 128
Variants		
LM-4WZS (V)	105/90/59	22 154 305
Sensor		
LM-SN Precipitation sensor		22 154 283
LM-SR Wind direction sensor		22 154 285
LM-ST Temperature sensor		22 154 284
LM-SW Wind speed sensor		22 154 286
Basic package		
LM-SB Basic package sensor installation		22 154 282

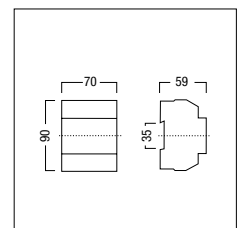


Room linking device, switch cabinet



- For management of 2 partitions using an end switch
- Controls affect the entire room or the divided-off area of the room
- Installed on EN rail 35 mm

	L/W/H	Order no.
LM-RV Room combination module	70/90/59	24 046 467



System components, sensors

Sensor (light) outdoor



- External daylight sensor for measuring daylight levels for daylight-based adjustment of artificial lighting and position of blinds (slats)
- Installed on pole Ø 42–50 mm
- Used in conjunction with LRA-1500(x) and LRA-150S

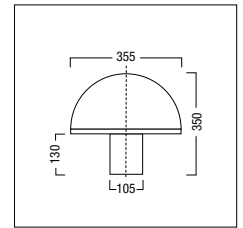
LM-TLM

H/Ø

Order no.

310/350

20 724 105



Sensor (light) surface-mount



- The light sensor measures the daylight entering the room
- Installation: surface-mounted on ceiling
- For connecting to the local control units.

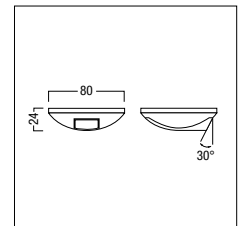
LSD Light sensor

H/Ø

Order no.

24/80

20 731 906



ED sensor (light), surface-mount



- The light sensor measures the daylight entering the room
- Power supply via DALI line (2 DALI loads)
- Installation: surface-mounted on ceiling
- No DALI addresses occupied
- For use with LM-3DALIS and LITENET netlink

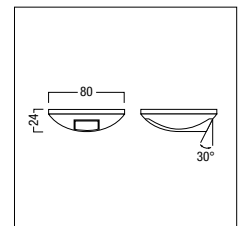
ED-EYE Light sensor

H/Ø

Order no.

24/80

22 154 682



Sensor (infrared), surface-mount



- Installation: surface-mounted on ceiling
- For use with LM-IRB infrared input modules

Sensor

IRED Infrared sensor, surface-mount

H/Ø

Order no.

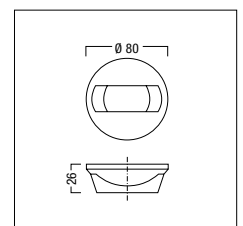
26/80

22 114 587

IRS Infrared remote control

28/57

20 975 492

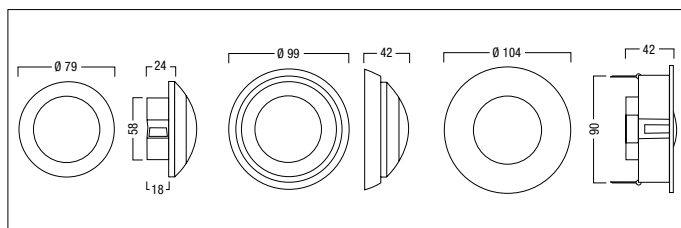


Sensor (radio) surface-mount/recessed



- Radio receiver picks up switch commands from up to 60 EnOcean momentary-action switches within specified receive radius
- Range approx. 10 metres
- Housing: halogen-free white plastic (RAL 9003)
- Mains voltage supply
- Ceiling-mounted in Euro/standard single back box; fitting accessories for surface-mounting and recessed-mounting included
- Momentary-action switch material: all those that can be fitted with EnOcean sender modules, models PTM100, PTM200 and PTM250

	H/Ø	Order no.
H5101-A222 EnOcean single blinds unit, aluminium		22 185 307
Sensor		
LM-RFR	42/104	22 154 466
Range extender		
Easyclick UP-Repeater Signal amplifier		22 154 633
Switch unit		
H5101-A210 EnOcean 1-way momentary-action switch, white		22 154 638
H5101-A211 EnOcean 1-way momentary-action switch, anthracite		22 154 637
H5101-A212 EnOcean 1-way momentary-action switch, aluminium		22 154 639
H5101-A230 EnOcean 2-way momentary-action switch, white		22 154 636
H5101-A231 EnOcean 2-way momentary-action switch, anthracite		22 154 635
H5101-A232 EnOcean 2-way momentary-action switch, anthracite		22 154 634
Trim		
B3 aluminium - anthracite		22 154 641
B3 aluminium - white		22 154 640

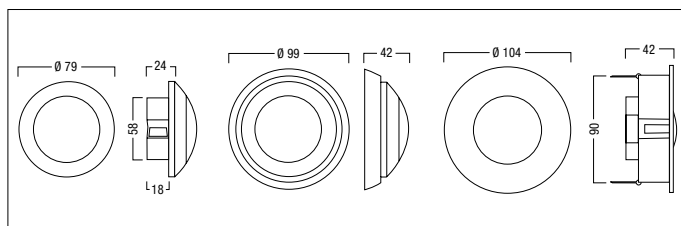


Sensor (infrared, presence), surface-mount/recessed



- Presence detector and integrated infrared interface
- Housing: halogen-free white plastic (RAL 9003)
- Detection range at 2.5 m mounting height: 8 m Ø
- Power supply via DALI line (4 DALI loads)
- Ceiling-mounted in Euro/standard single back box; fitting accessories for surface-mounting and recessed-mounting included
- Up to 3 IRTOUCH remote control units with different configuration
- For use with LM-3DALIS and LITENET netlink
- No DALI addresses occupied

	Order no.
Sensor	
ED-SENS Präsenz + infrared sensor	22 154 506
Remote control	
IRTOUCH Infrared remote control for ED-SENS sensor	22 154 450

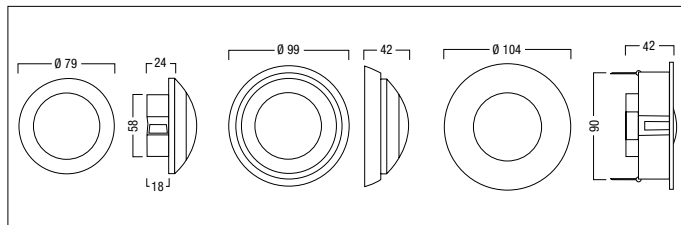


PIR sensor, surface-mount/recessed



- High resolution and sensitivity, optimised for office applications
- Detection range: Ø 5m when installed at a height of 2.5 m; Ø 6 m at height of 3 m; Ø 7m at height of 3.5 m
- Housing: halogen-free white plastic (RAL 9003)
- Pre-assembled cable included for connecting sensor to LM-TLX or LM-RLX
- Ceiling-mounted in Euro/standard single back box; fitting accessories for surface-mounting and recessed-mounting included
- Optimum sensor position: hands of user sitting at workstation should be in centre of detection range
- Connection to LUXMATE LM-TLX or LM-RLX

	H/Ø	Order no.
Sensor		
PST 2 PIR sensor		22 162 319
PST cable, 10m		
LPST10 preconfigured cable, 10m		22 154 126



System components, ballasts

[...] Shared properties PCA Xitec II

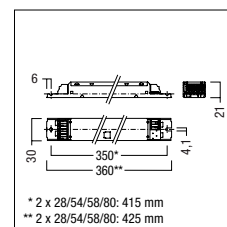
- DALI
- DSI
- For emergency lighting systems as per EN 50172
- Noise-free precise control via DALI or DSI signal, switch-DIM or corridorFUNCTION
- DALI-MEMORY
- Extended DALI commands
- Highest possible energy class CELMA EEI = A1 BAT
- switchDIM (with memory function)
- corridorFUNCTION (custom programmable)
- Intelligent Temperature Guard (overtemperature protection)
- Intelligent Voltage Guard (overvoltage indication and undervoltage shutdown)
- Integral SMART interface
- Automatic start after replacement of defective lamps
- Automatic shutdown if the lamp is faulty

PCA T5 EXCEL one4all Ip Xitec II, 14 – 80 W



- [...]
- Multilamp management
- Automatically triggered emergency lighting value in DC mode 15 %, can be set between 1 and 100 %

	Order no.
	<i>electronic</i>
PCA 1x14/24 T5 EXCEL one4all Ip	22 185 103
PCA 1x21/39 T5 EXCEL one4all Ip	22 185 110
PCA 1x28/54 T5 EXCEL one4all Ip	22 185 108
PCA 1x35/49/80 T5 EXCEL one4all Ip	22 185 105
PCA 2x14/24 T5 EXCEL one4all Ip	22 185 104
PCA 2x21/39 T5 EXCEL one4all Ip	22 185 111
PCA 2x28/54 T5 EXCEL one4all Ip	22 185 109
PCA 2x35/49 T5 EXCEL one4all Ip	22 185 106
PCA 2x80 T5 EXCEL one4all Ip	22 185 107

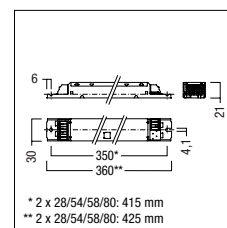


PCA T8 EXCEL one4all Ip Xitec II, 18 – 58 W



- [...]
- Automatically triggered emergency lighting value in DC mode 15 %, can be set between 1 and 100 %

	Order no.
	<i>electronic</i>
PCA 1x18 T8 EXCEL one4all Ip	22 185 239
PCA 1x36 T8 EXCEL one4all Ip	28 000 034
PCA 1x58 T8 EXCEL one4all Ip	28 000 036
PCA 2x18 T8 EXCEL one4all Ip	22 185 242
PCA 2x36 T8 EXCEL one4all Ip	28 000 038
PCA 2x58 T8 EXCEL one4all Ip	28 000 040

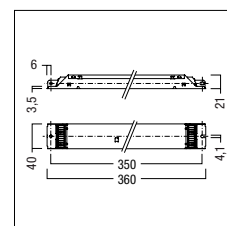


PCA T8 EXCEL one4all Ip Xitec, 3 and 4x18 W



- [...]
- Multilamp management
- Automatically triggered emergency lighting value in DC mode 15 %, can be set between 1 and 100 %

	Order no.
	<i>electronic</i>
PCA 3x18 T8 EXCEL one4all Ip	22 185 247
PCA 4x18 T8 EXCEL one4all Ip	22 185 250

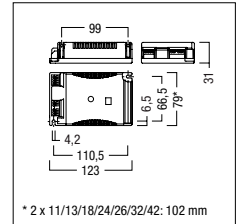


PCA TC EXCEL one4all Xitec II, 11 – 57 W



- [...]
 - Multilamp management
 - Automatically triggered emergency lighting value in DC mode 15 %, can be set between 3 and 100 %

	Order no.
PCA 1x11/13 TC EXCEL one4all	22 185 134
PCA 1x18 TC EXCEL one4all	22 185 130
PCA 1x18/24 TCL EXCEL one4all c	22 185 251
PCA 1x26-57 TC EXCEL one4all	22 185 128
PCA 1x28 TC-DD EXCEL one4all	22 185 254
PCA 1x55 T5c EXCEL one4all	22 185 132
PCA 2x11/13 TC EXCEL one4all	22 185 135
PCA 2x18 TC EXCEL one4all	22 185 131
PCA 2x18/24 TCL EXCEL one4all c	22 185 257
PCA 2x26/32/42 TC EXCEL one4all	22 185 129



DMX lighting management

Dynamic lighting scenarios, especially for external façades





Zumtobel is a one-stop supplier of complete solutions for large-area lighting scenarios. Experienced technicians ensure intelligent implementation of the customers' personal requirements, covering everything from creative design and DMX hardware and software through to programming. DMX lighting management makes light unfold its artistic talents, by allowing for lightning-fast control of a large number of lighting points and automatic running of time sequences. Control is via momentary-action switches or innovative glass control points.



Private and public buildings, where external façades are used to enhance an institution's or a company's image.



DMX

Dynamic lighting scenarios,
especially for external façades

Zumtobel is a one-stop supplier of complete solutions for large-area lighting scenarios. Experienced technicians ensure intelligent implementation of the customers' personal requirements, covering everything from creative design and DMX hardware and software through to programming. DMX lighting management makes light unfold its artistic talents, by allowing for lightning-fast control of a large number of lighting points and automatic running of time sequences. Control is via momentary-action switches or innovative glass control points.

Butler XT



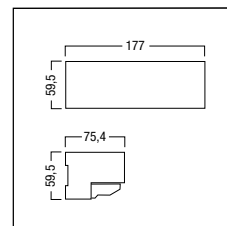
- Controls 2 DMX universes (2 x 512 DMX channels)
- Internal clock and astronomical clock
- For playing scenes, shows and short videos
- For integrating standard momentary-action switches or glass touchpanel control units
- Programmed using "Lighting Application Suite" PC software (by Zumtobel Service)
- Installation on rail in switch cabinet
- Voltage supply: 24 V DC
- Connections via RJ45 connector or plug-in terminals
- Adapter cable for connecting XLR 5-pin female connector (to DMX standard ANSI E1.11) to Butler XT2 RJ45
- 24 V/1.5 A power pack

Accessory

	L/W/H	Order no.
RJ45 XLR 5pol Butler XT adapter cable		24 159 615
SUP24VDC/1,5A 24V power supply		22 161 814

DMX controller

Butler XT2	177/60/75	24 160 771
------------	-----------	------------



Dongle



Dongle enterprise

Order no.

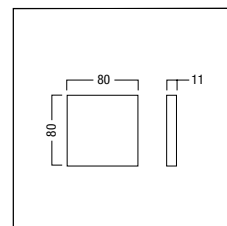
24 161 141

Glass touchpad T6 XT



- Elegant control unit with touch-sensitive glass face
- 4 touch pads printed with "1" to "4" plus two symbols for intensity; customisable labels
- Available in "white" or "black"
- Programmed using "Lighting Application Suite" PC software (by Zumtobel Service)
- Only for connection to Butler XT
- Power supplied via control line from Butler XT

	L/W	Order no.
Glass Touch T6 XT B black	80/80	24 175 967
Glass Touch T6 XT W white	80/80	24 175 968

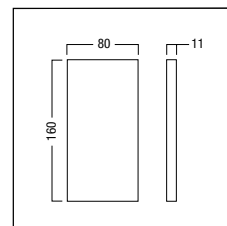


Glass touchpad T6R XT



- Elegant control unit with touch-sensitive glass face
- 6 touch pads printed with "1" to "6"; customisable labels
- Dimming ring with "Play" button
- Available in "white" or "black"
- Programmed using "Lighting Application Suite" PC software (by Zumtobel Service)
- Only for connection to Butler XT
- Power supplied via control line from Butler XT

	L/W	Order no.
Glass Touch T6R XT B black	80/160	24 175 965
Glass Touch T6R XT W white	80/160	24 175 966



DMX system components

DMX splitter



- 4-way splitter for DMX or VCU
- 230 V AC supply
- Termination resistance on input side can be set by switches
- Input: RJ 45 or 5-pin XLR, Output: RJ45
- Bench-top or wall-mounting unit
- Includes IEC cable fitted with safety plug

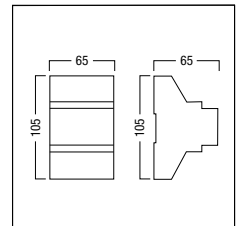
	kg	Order no.
SPLITTER DMX VC	1,3	22 166 267

DALI-DMX gateway

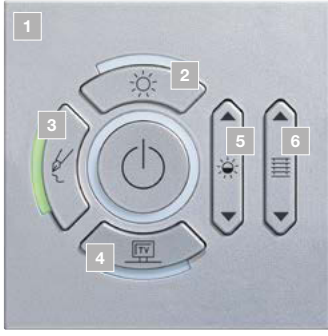


- For integrating DMX luminaires in DALI light control systems
- Converts 16 DALI addresses into 16 DMX addresses
- Adapted dimming curve (DALI control value 86 = DMX value 1)
- Equivalent to 1 DALI load
- Installation on rail in switch cabinet
- 230 V AC power supply

	kg	Order no.
Gateway		
DALI-DMX GATEWAY	0,5	24 166 449



CIRCLE button combinations



- First select basic unit:
 - 28000006 LM-Cxx (V)
 - 28000007 ED-Cxx (V)
 - 28000008 ZBOX (V)
 - 28000009 DALI-Cxx (V)
 - 28000010 TUNE-Cxx (V)
- After having selected the basic unit, specify the required combination from 1 to 6 separated by “/”.
- Possible scene icon button positions “top”, “middle” and “bottom” are only available if indicated in the table.

- | | | | |
|----------|---|--|----------------------------------|
| 1 | Frame colour and shape
<i>Designation</i> | | Frame black square
<i>CB</i> |
| 2 | Top scene icon
<i>Number</i> | | Frame silver square
<i>CS</i> |
| 3 | Middle scene icon
<i>Number</i> | | Frame white square
<i>CW</i> |
| 4 | Bottom scene icon
<i>Number</i> | | Frame black round
<i>SB</i> |
| 5 | Left rocker control switch icon
<i>Letter</i> | | Frame silver round
<i>SS</i> |
| 6 | Right rocker control switch icon
<i>Letter</i> | | Frame white round
<i>SW</i> |

28000007 ED-Cxx (V) CS/24/40/28/h/e



Scene buttons

Number	Icon	Designation	Button		
			top	middle	bottom
01	1	1	•	•	•
02	2	2	•	•	•
03	3	3	•	•	•
04		Working	•		•
05		Writing	•	•	•
06		Meeting	•		•
07		Reception	•		•
08		Workshop		•	
09		Slide show	•		•
10		Report	•		•
11		Cinema show	•		•
12		Lecture	•	•	•
13		Break	•	•	•
14		Day	•	•	•
15		Evening	•	•	•
16		Night	•	•	•
17		Open	•	•	•
18		Closed	•	•	•
19		Cleaning	•	•	•
20		Sequence	•	•	•
21		Reconstruction	•	•	•
22		Presentation	•	•	•
23		Vernissage	•	•	•
24		Brightness	•	•	•
25		Beauty care	•	•	•
26		Meditation	•	•	•
27		Reading	•	•	•
28		TV ZBOX	•		•

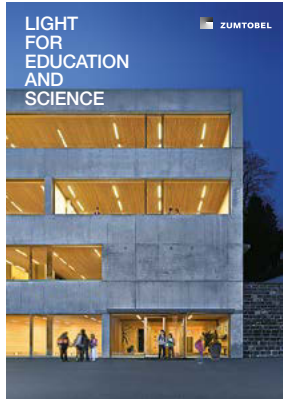
Rocker control switch

Number	Icon	Designation	Button		
			top	middle	bottom
29		Television	•	•	•
30		Theatre	•	•	•
31		Concert	•	•	•
32		Eating	•		•
33		Energy saving	•		•
34		Dancing	•		•
35		Drawing	•	•	•
36		Exhibition	•		•
37		Workout	•	•	•
38		Game	•	•	•
39		Squash	•		•
40		Texting	•	•	•
41		Accent	•	•	•
42		Aerobic	•	•	•
43		Sauna	•	•	•
44		Massage	•		•
45		Solarium	•		•
46		Bed	•		•
47		Morning care	•		•
48		Visit	•		•
49		Treatment	•	•	•
50		Operation	•		•
51		Waking up	•		•
52		Heat protection	•	•	•
53		Partial use	•	•	•
54		Maintenance	•	•	•
55		Presentation	•		•

Letter	Icon	Designation
a		Brightness
b		Luminaire group 1
c		Luminaire group 2
d		Balance
e		Glare protection
f		Window
g		Screen
h		Brightness 2
i		Meditation
j		Luminaire group 3
k		Luminaire group 4
l		Glare protection group 1
m		Glare protection group 2
n		Glare protection group 3
o		Glare protection group 4
p		Curtain
q		Reading
r		Texting
s		Beauty care
t		Colour temperature
u		Luminaire group 1
v		Luminaire group 2



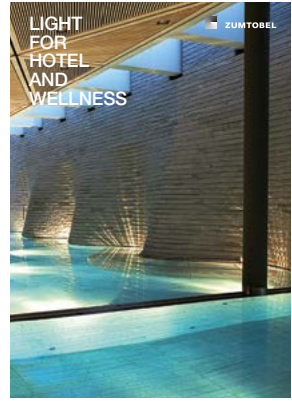
zumtobel.com/office



zumtobel.com/education



zumtobel.com/shop



zumtobel.com/hotel



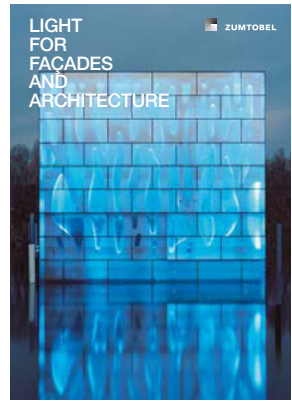
zumtobel.com/culture



zumtobel.com/healthcare



zumtobel.com/industry



zumtobel.com/facade

Zumtobel is the internationally leading supplier of integral lighting solutions for professional interior and exterior lighting applications.

- Offices and Communication
- Education and Science
- Presentation and Retail
- Hotel and Wellness
- Art and Culture
- Health and Care
- Industry and Engineering
- Façades and Architecture

We provide unique customer benefits by integrating technology, design, emotion and energy efficiency. Under the Humanergy Balance concept, we combine the best possible ergonomic lighting quality for an individual's well-being with the responsible use of energy resources. The company's own sales organisations in twenty countries, as well as commercial agencies in fifty other countries, form an international network of experts and design partners providing professional lighting consulting, design assistance and comprehensive services.

Lighting and sustainability

In line with our corporate philosophy "We want to use light to create worlds of experience, make work easier and improve communications and safety while remaining fully aware of our responsibility to the environment", Zumtobel offers energy-efficient high-quality products, while at the same time making sure that our production processes based on the considerate use of resources are environmentally compatible.

zumtobel.com/sustainability



Top quality – with a five-year guarantee.

As a globally leading luminaire manufacturer, Zumtobel provides a five year manufacturer's guarantee on all Zumtobel branded products subject to registration within 90 days from the invoice date and in accordance with the terms of guarantee at zumtobel.com/guarantee.

Order no. 04 797 479-EN 12/2013 © Zumtobel Lighting GmbH

Technical data was correct at time of going to press.

We reserve the right to make technical changes without notice. Please contact your local sales office for further information. For the sake of the environment: Luxo Light is chlorine-free paper from sustainably managed forests and certified sources.





Track and spots



Modular lighting systems



Downlights



Recessed luminaires



Surface-mounted and pendant luminaires



Free-standing and wall-mounted luminaires



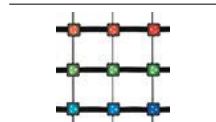
Continuous-row systems and individual batten luminaires



High-bay luminaires and floodlight reflector systems



Luminaires with extra protection



Façade, media and outdoor luminaires



Lighting management system



Emergency lighting



Medical supply systems

United Kingdom

Zumtobel Lighting Ltd.
Chiltern Park
Chiltern Hill, Chalfont St. Peter
Buckinghamshire SL9 9FG
T +44/(0)1753 482 650
F +44/(0)1753 480 350
uksales@zumtobel.com
zumtobel.co.uk

USA and Canada

Zumtobel Lighting Inc.
3300 Route 9W
Highland, NY 12528
T +1/(0)845/691 6262
F +1/(0)845/691 6289
zli.us@zumtobel.com
zumtobel.us

Australia and New Zealand

Zumtobel Lighting Pty Ltd
333 Pacific Highway
North Sydney, NSW 2060
T +61/(2)8913 5000
F +61/(2)8913 5001
info@zumtobel.com.au
zumtobel.com.au

China

Zumtobel Lighting China
Shanghai office
Room 101,
No 192 YIHONG Technology Park
Tianlin Road, Xuhui District
Shanghai City, 200233, P.R. China
T +86/(21) 6375 6262
F +86/(21) 6375 6285
sales.cn@zumtobel.com
zumtobel.cn

Hong Kong

Zumtobel Lighting Hong Kong
Unit 4319-20, Level 43,
Tower 1, Metroplaza,
223 Hing Fong Road,
Kwai Fong, N.T.
T +852/(0)2503 0466
F +852/(0)2503 0177
info.hk@zumtobel.com

India

Zumtobel Lighting GmbH
1522, Devika Tower,
6, Nehru Place,
110019 New Delhi
T +91/11 4601 2782
info.in@zumtobel.com

Singapore

Zumtobel Lighting Singapore
158 Kallang Way # 06-01/02
Singapore 349245
T +65 6844 5800
F +65 6745 7707
info.sg@zumtobel.com

United Arab Emirates

Zumtobel Lighting GmbH (Branch)
Dubai Airport Free Zone,
Building 6W, B Block, 233
PO Box 54302
Dubai
T +971/(0)4 299 3530
F +971/(0)4 299 3531
info@zumtobeluae.ae

Romania

Zumtobel Lighting Romania SRL
Tipografilor 11-15,
S-Park Office, Wing A1-A2
013714 Bucharest
T +40 312253801
F +40 312253804
welcome.ro@zumtobel.com
zumtobel.com

Hungary

Zumtobel Lighting Kft
Váci út 49
1134 Budapest
T +36/(1) 35 00 828
F +36/(1) 35 00 829
welcome@zumtobel.hu
zumtobel.hu

Croatia, Bosnia and Herzegovina

Zumtobel Licht d.o.o.
Radnička cesta 80 – Zagreb tower
10000 Zagreb
T +385/(1) 64 04 080
F +385/(1) 64 04 090
welcome@zumtobel.hr
welcome.ba@zumtobel.com

Serbia

Zumtobel Licht d.o.o.
Karadjordjeva 2-4
Beton Hala
11000 Belgrade
T +381/(0)11 65 57 657
F +381/(0)11 65 57 658
welcome@zumtobel.rs

Czech Republic

Zumtobel Lighting s.r.o.
Jankovcova 2
Praha 7
17000 Praha
T +420/(2) 66 782 200
F +420/(2) 66 782 201
welcome@zumtobel.cz
zumtobel.cz

Slovak Republic

Zumtobel Lighting s.r.o.
Vlčie Hrdlo 1,
824 12 Bratislava
welcome@zumtobel.sk
zumtobel.sk

Poland

Zumtobel Licht GmbH Sp.z.o.o.
Platinum III
ul. Woloska 9a
02-583 Warszawa
T +48/(22) 856 74 31
F +48/(22) 856 74 32
welcome@zumtobel.pl
zumtobel.pl

Slovenia

Zumtobel Licht d.o.o.
Štukljeva cesta 46
1000 Ljubljana
T +386/(1) 5609 820
F +386/(1) 5609 866
welcome@zumtobel.si
zumtobel.si

Russia

Zumtobel Lighting GmbH
Official Representative Office
Skakovaya Str. 17
Bld. No 1, Office 1104
125040 Moscow
T +7/(495) 945 36 33
F +7/(495) 945 16 94
info-russia@zumtobel.com
zumtobel.ru

Norway

Zumtobel Belysning
Hoffsveien 4
Postboks 1025 Hoff
0218 Oslo
T +47 22 06 50 50
firmapost@zumtobel.com
zumtobel.no

Sweden

Zumtobel Belysning
Birger Jarlsgatan 57
113 56 Stockholm
T +46 8 26 26 50
info.se@zumtobel.com
zumtobel.se

Denmark

Zumtobel Belysning
Store Kongensgade 118
1264 København
T +45 35 43 70 00
info.dk@zumtobel.com
zumtobel.dk

Headquarters

Zumtobel Lighting GmbH
Schweizer Strasse 30
Postfach 72
6851 Dornbirn, AUSTRIA
T +43/(0)572/390-0
F +43/(0)572/22 826
info@zumtobel.info

Zumtobel Licht GmbH
Grevnamarschstrasse 74-78
32657 Lemgo, GERMANY
T +49/(0)5261 212-0
F +49/(0)5261 212-7777
info@zumtobel.de

zumtobel.com



ZUMTOBEL

LUXMATE

Lighting management

In the beginning was dark space. Then light, energy and life. LUXMATE controls the potential of light, creating new worlds of experience. For people, their visions, their well-being. With maximum energy efficiency.

